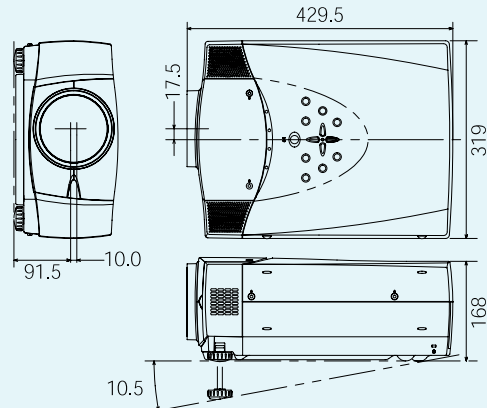


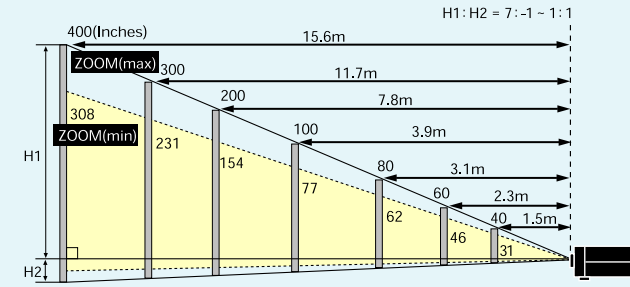
Portable Multimedia LCD Projector

PLV-70

External dimensions (unit:mm)



Approximate throw distance/picture size aspect ratio 16:9



Screen size(inches)	400	300	200	150	120	100	80	60	40
Zoom(min)	—	15.2m	10.1m	7.6m	6.1m	5.1m	4.0m	3.0m	2.0m
Zoom(max)	15.6m	11.7m	7.8m	5.8m	4.7m	3.9m	3.1m	2.3m	1.5m

Approximate throw distances shown above were calculated on lens design specifications. Please note that up to 5% deviation may result due to lens variations.

Option

Audio cable



KA-VC-A10

Video cable



KA-VC-10/KA-VC-5

S-Video cable



KA-VC-S10

Ceiling mount bracket

Low ceiling metal fitting (handing) POA -CHS302
High ceiling metal fitting (handing) POA -CHL302

Optional Zoom Lens Specifications

Type	Fixed-short	Short-focus		Long-focus	
Model number	LNS-W32	LNS-W31A		LNS-T31A	
Focal distance	f=22.3mm	f=34 to 48mm		f= 64 to 112mm	
F number	F2.5	F2.5 to F3.1		F2.0 to F2.9	
Lens diameter	175mm	96mm		95mm	
Lens weight	1.6kg	1.7kg		1.9kg	
Zoom/Focus	—	Motor driven 1.4x		Motor driven 1.8x	
Stackable	No	No		Yes	
Approx. throw distance	Fixed	Maximum zoom	Minimum zoom	Maximum zoom	Minimum zoom
Screen size (inches) aspect ratio:16:9					
40	—	1.1m	1.5m	1.9m	3.6m
60	—	1.6m	2.3m	2.9m	5.4m
70	1.2m	1.9m	2.7m	3.5m	6.3m
80	1.4m	2.2m	3.1m	4.0m	7.3m
90	1.6m	2.5m	3.5m	4.5m	8.2m
100	1.8m	2.7m	3.9m	5.0m	9.1m
110	1.9m	3.0m	4.3m	5.5m	10.0m
120	2.1m	3.3m	4.7m	6.0m	11.0m
150	—	4.1m	5.9m	7.6m	13.7m
170	—	4.7m	6.7m	8.6m	15.6m
200	—	5.5m	7.9m	10.1m	18.4m
300	—	8.3m	11.9m	15.3m	27.6m
350	—	9.7m	13.9m	17.9m	32.2m
400	—	11.1m	15.9m	20.4m	36.9m

Throw distances are based on design specifications and are subject to 5% variation in actual use. Stack point distances are optimum distances for twin-stacked projectors. Performance outside the stack point parameters may vary due to lens quality or other factors. Optional lenses are supplied with a special tool to allow easy installation in the projector body.

Specifications

Model number	PLV-70
Panel system	1.2-inch TFTp-si 3
Number of pixels	3,147,264 total pixels, 1,049,088 (1,366 x 768) x 3 panels
Projection lens	Motor-driven zoom/focus (1-1.3x) F1.8-2.1, f=48.4-62.8mm
Projection lamp	200W UHP lamp
Screen size (throw distance)	31 to 400 inches (1.5 m to 15.6m)
Color reproduction	Full color (16,770,000 colors)
Input Signal	Input 1: HDB 15pin Type Terminal / DVI-D Input 2: BNC Type Jacks (Video / Y,C / Pb(Cb),Pr(Cr)) / (G,B,R,H,V) Mini DIN 4pin Type Jack(S-Video) Input 3: RCA Type Jacks(Video / Y,Pb(Cb),Pr(Cr))
Audio Signal	Input 1/2: Stereo (mini jack) Input3: Stereo (RCA)
Control Signal	RC Jack, Control Port
Computer compatibility	SXGA / XGA / SVGA / VGA / MAC
Picture brightness	2200 ANSI lumens (16:9 aspect ratio projection)
Uniformity	90%(corner to corner)
Contrast ratio	900:1
Operating noise	35dBA
Audio output	2W + 2W stereo
Speakers	Two 40 x 70mm (elliptical)
Scanning frequency	H sync:15-100kHz, V sync:50-100Hz, dot clock:less than 140MHz, G on sync
RGB input resolution	1,366 x 768 dots (1,280 x 1,024 dot resizing possible)
Horizontal resolution	800 TV lines
Dimensions (W x H x D)	319x168x429.5mm
Net weight	7.9kg
Rated power supply	100V-240V 50Hz/60Hz auto change
Power consumption	300W
Colour systems	PAL/SECAM/NTSC/NTSC 4.43/PAL-M/PAL-N
Standard accessories	Power cord Wireless/wired remote control unit Video cable S-Video cable Audio cable Dust cover Lens cover Remote control cable

*Specifications subject to change without notice.

Safety Precautions

- Do not install the LCD projector in areas exposed to water, humidity,dust, oil or smoke or in close proximity to heat sources. Make sure the heat vents are not blocked.
- Fire, electrical shock or unit malfunction may result if the above precautions are neglected.
- Do not block the heat vents as fire, electrical shock or unit malfunction may result.
- Do not look through the lens while projecting as damage to the eyes could result. Take special care when children are close by.
- Do not look at the laser beam coming out of the remote control unit or direct the laser beam toward a person. Direct contact with the laser beam may cause damage to the eyes.

Remarks

- Spare LCD projector parts are kept in stock at least for eight years after the product is discontinued.
- LCD panel manufacturing requires extremely high-precision technology with pixels having a 99.99% quality control rating. However, there does exist a 0.01% or smaller possibility of dead pixels or constantly lit pixels.
- Please note that product colors in the brochure may differ slightly from those of actual products.
- All screen pictures in the catalog are simulated.
- All company and product names are the trademarks or registered trademarks of respective owners.
- Product appearance and specifications subject to change without notice.

Further details regarding this product can be accessed at <http://www.digital-sanyo.com>

***Caution:** please consult the instruction manual to ensure safe and proper operation of the product.

Distributed by:



SANYO Electric Co., Ltd.
TV & Visual Display Products Divisions
©2002 SANYO Printed in Japan 2002.7.SI
SML-023



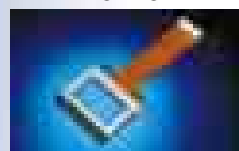
for Home Theater Use.

THEATER

A Wider Home Theater Experience

16:9 Wide-Screen Aspect Ratio LCD Panels

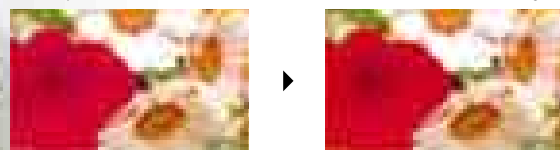
Each of the three LCD panels in the PLV-70 has 1,366 x 768 dots, giving a total of 3.15 million pixels to ensure high-resolution real XGA image quality on a wide screen. The PLV-70 brings you closer to a genuine movie theater experience in your own home.



Color management function for optional color adjustment

A color management function permitting adjustment of any color (hue, chroma, gamma value) has been included. For the color to be corrected, a narrow hue range can be specified, and as the correction is reflected in real time, true color reproduction with high accuracy and effective color correction or stressing matching the scene can be done.

* Adjustment values for up to eight places can be reflected.
* The adjustment value can be stored in user mode (video/PC mode, a total of 8 images)



Automatic adjustment matching the image, auto picture control

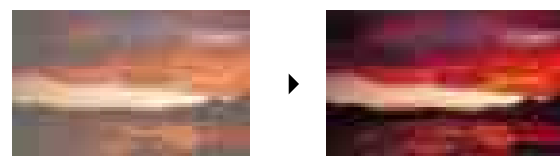
Automatic gamma adjustment The brightness of the image is judged, the most suitable gamma value is set automatically, and a picture without too bright white parts or squashed black is reproduced. Intelligent digital sharpness control The image signal components are analyzed and the most suitable sharpness is set automatically.

2,200 ANSI Lumens for a Big, Bright Picture

Whether its for home theater use or professional event applications, the PLV-70 delivers the brightness you need for superior big-screen enjoyment. The light comes from a 200W UHP lamp, and the brightness of each pixel is enhanced by a built-in microlens. The result is screen brightness of 2,200 ANSI lumens. Professional users can stack two units together for a combined total of more than 4,400 ANSI lumens.

High contrast to suit any picture

SANYO's high-contrast optical system compensates for polarized scattering as the light passes through the LCD panels and increases black contrast to achieve an on-screen contrast ratio of 900 to 1 (black/white). 10-bit digital gamma correction control offers finer gradation adjustment, allowing the user to achieve a perfect match for the projected image.

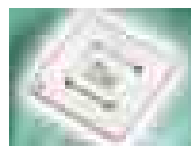


DIGITAL

Digital Technology to Enhance Image Quality

Correspondence to movement, new progressive IC installed

A new, original IC from Sanyo is installed, which permits smooth progressive conversion without jaggies by correspondence to movement. With correspondence to 2-3 pull-down, movie sources also can be projected with high picture quality. In addition, progressive conversion is possible for 1080i, so that HDTV can be projected with even higher picture quality.



3D digital Y/C separation circuit

This circuit enhances resolution and reduces noise on moving images to produce a clearer, finer picture.

3D digital noise reduction

Luminance noise and chrominance noise in the video signal are filtered out by this circuit to ensure finer on-screen colors without flicker.

SETTING

Plug-and-Play Easy Setup

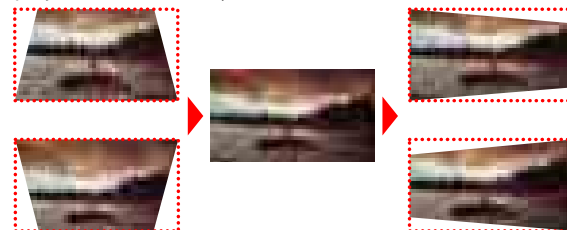
Super-Quiet Operation

Linear control of fan rotation greatly reduces audible operating noise. The fan control system is linked to a sensor that constantly monitors the internal temperature of the projector, and fan speed is adjusted accordingly to eliminate noisy bursts of fan activity and reduce the noise level to just 35dBA*.

*Measured according to Japanese industry guidelines.

Up/down left/right keystone correction

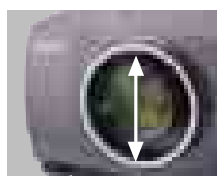
In addition to up/down keystone correction (maximum 40 degrees), SANYO has added left/right keystone correction* (maximum 10 degrees) to these new models. This makes it possible to project correct-looking images even if the projector is not directly in front of the screen.



* The adjustable range varies in accordance with input signal and zoom power.
* After correction, the projected picture becomes smaller than the original image size.

Up/Down Lens Shift

The motor driven lens shift makes it easy to center the picture on the screen without raising the projector body. It also simplifies setup if two projectors are stacked for simultaneous use.



for Business Use.

FLEXIBILITY



PJ-Net Organizer POA-PN01A (option)

These projectors can be connected to a computer network via the PJ-Net Organizer (POA-PN01A, sold separately) for management and control capabilities. Projectors located in several different locations can be controlled from a single computer using your normal web browser - there is no need for any special software.



Example of POA-PN01A connection

E-mail Warning Messages

A warning message is sent to the maintenance staff or user if the projector malfunctions, or if it is time to replace a lamp.

Automatic On/Off Timer

You can program the days and times of projector use (maximum 10 events) so that the projector will automatically switch on and off. The timer can be programmed to run every day or every week, or for specific days.

Web Management

Using a web browser application, you can check on the condition of the projector or adjust the controls in the following ways: Projector condition: lamp use time, projector use time, in-store condition, power supply, input information
Projector controls: power (on/off), input mode, PC, system, image, and other settings
Saving/downloading of settings: input mode, system, image and screen settings can be stored or downloaded

Control of Peripherals

PJ-Net Organizer is equipped with an RS-232C serial communications port. This allows control of peripheral appliances that are similarly equipped with a serial port*.

* Serial port setting required. Special driver software, etc., may be needed (not provided with the POA-PN01A).

POA-PN01A Product Specifications

LAN interface	Applicant regulation IEEE802.3 (10Base-T) IEEE802.3u (100Base-TX)
Data transfer Speed	10Mbps/100Mbps
Data transfer mode	Half duplex/Full Duplex
Terminal	8-pin modular (RJ-45)
Network protocol	TCP/IP specification TCP/IP
Serial interface	RS-232C
Baud rate	0.3/1.2/2.4/4.8/9.6/19.2/28.8/57.6/115.2Kbps
Flow control	Hardware flow control (RTS/CTS, Xon/Xoff)
Parity check	Odd/Even
Terminal	D sub 9-pin Male
Power source	Supplied from the projector
Power consumption	3.0 watts
Dimension (W x H x D)	105 x 27.5 x 132mm
Weight	245g (0.54 lbs)
Built-in battery	Lithium battery, Type CR2032, 3.0V
Operating temperature	41 F - 95 F (5 C - 35 C)
Storage temperature	14 F - 140 F (-10 C - 60 C)

*The specifications are subject to change without notice.

OTHER FEATURES

- True multimedia projection capabilities. Computer projection from VGA to SXGA.
- Digital Zoom
- Power Management
- On start
- Freeze frame, no show and other useful features for presentations
- Digital Realized Interpolation(DRIT) for superior digital resizing
- Rear or ceiling mounted projection
- Built-in stereo amp and speakers(2W+2W)
- The accessory remote control has self-illuminated / light-storing buttons for easy operation also in dark locations.

OPTIONAL LENSES

Short-focus and long-focus zoom lenses are available as options to suit the installation setup. The optional lens replaces the standard lens of the projector.



SANYO's PLV-70 LCD Projector gives you a big, bright, beautiful picture right in your living room.



Experience a dynamic, realistic picture that surpasses movie theater quality. Right in your livingroom. Let SANYO digital technology bring you a brilliant (2200 ANSI Lumens) picture even in a room that's not dark on a monster 16:9 wide screen. Plus newly developed HDTV format-compatible progressive circuitry with motion and PureCinema 2-3 pull-down film detection for image enhancement and color management circuitry formore precise color adjustment and memory. Also, with an optional PJ-Net Organizer, other projectors can be managed on a network, transforming this model into an ideal business tool in the office or the board room. SANYO's new PLV-70 PortableMultimedia LCD Projector. Get the picture?

Portable Multimedia LCD Projector

PLV-70

