

VT465/VT560/VT660K



Accessories



Additional Features

Eco-mode Technology	Increase lamp life through light output adjustments
Automatic Keystone Correction	Projector automatically corrects keystone distortions
ADA 505 Compliant	Features monochrome menu display setting for color blind users
AutoSense	Projector automatically syncs with any computer signal and features one touch image optimization
Intuitive Design	Designed to be used as a shared device - inputs and cables are color coded, direct access buttons on the projector cabinet and on remote control.
Monitor Output	Allows you to connect a local monitor directly to the projector
VORTEX Technology Plus	Provides uncompromising display of video and data. Improves white level, color accuracy, dynamic range, and display of varying levels of black in an image. Picture management enables adjustment of RGB for display of personal color preferences.
Cabinet Key Lock	Restricts access to projector cabinet controls
Image magnification	64 step image magnification with location control

Optical

LCD Panels	0.7" x 3, p-Si TFT	
Native Resolution	VT465 - SVGA (800 x 600 pixels) VT560 & VT660K - XGA (1024 x 768 pixels)	
Resolutions Supported	VGA through UXGA with Advanced AccuBlend	
Light Output	VT465 - 1800 standard ANSI Lumens, 1500 Eco-mode VT560 - 1300 standard ANSI Lumens, 1040 Eco-mode VT660K - 2000 standard ANSI Lumens, 1600 Eco-mode	
Image Size	21" to 300" diagonal	
Projection Distance	29" to 435"	
Lamp (NSH)	205 watt standard, 164 watt Eco-mode	
Lamp Life	3,000 hours in Eco-mode, 2,000 hours in standard	
Keystone Correction	Automatic (±30 degrees)	

Electrical

Inputs	RGB	Mini D-Sub 15-pin for computer or component video (optional cable)
	S-Video	NTSC, PAL, PAL-60, SECAM, NTSC 4.43, PAL-N, PAL-M
	Composite Video	NTSC, PAL, PAL-60, SECAM, NTSC 4.43, PAL-N, PAL-M
	Audio	(2 Pair) L/R RCA for video and S-Video Stereo mini jack for computer
Outputs	HDTV Compatible	1080i, 1080i/50Hz, 720p, 480p, 480i
	Monitor Output	Mini D-Sub 15-pin
	USB	USB output to PC for wireless remote control
Sync Range	Variable Audio Out	Stereo mini jack for connection to external powered speakers
	Horizontal	15-100 kHz
Power Requirements	Vertical	50-120 Hz
	Power Consumption	100-120V / 200-240 VAC, 50 Hz/60Hz
Built-in Speaker	270 W standard, 220 W Eco-mode	
Audible Noise	1W monaural	
	37dB standard, 32dB in Eco-mode	

Mechanical

Installation Orientation	Floor/Front, Floor/Rear, Ceiling/Front, Ceiling/Rear	
Dimensions	12.2" (W) X 9.7" (D) X 3.5" (H), 310mm X 230mm X 89mm	
Weight	6.6 pounds, 2.9Kg	
Regulations	USA: UL1950, FCC Class B Canada: CSA950 (C-UL)	
Warranty	Registered owners receive a 3-year limited parts and labor warranty. The first year is covered by InstaCare. InstaCare provides the original owner limited concurrent 3-business day repair/return or next business day exchange. The lamp, when used under normal operating conditions is warranted for 1000 hours or six months, whichever comes first.	

Product/Accessories Order Information

Order Code	Description
VT465	SVGA, 1800 ANSI Lumens projector
VT560	XGA, 1300 ANSI Lumens projector
VT660K	XGA, 2000 ANSI Lumens projector
TRAVELPRO200	Leather rolling case for easy transport through airport. Bag contains compartments for projector, laptop and paper, stores in airplane overhead
VT60ATAPRO	Rugged case for shipment and airport check-in
VT60ROLLER	Platinum, high impact plastic rolling case for projector, stores in airplane overhead
ADP-CV1	Component video adapter
VT60CM	Ceiling mount featuring security screws
VT60LP	Replacement lamp
LTSCREEN	50" diagonal table top screen in compact carrying case
SC200	Security cable locks projector table or cart

Optional Warranty Programs

INSTACAREEXT02	Second year of InstaCare Service Program
INSTACAREEXT03	Second and third years of InstaCare Service Program

easy **setup**
puts you at
ease

NEC VT465, VT560 and VT660K
ultra-portable/desktop projectors

VT465	SVGA, 1800 ANSI
VT560	XGA, 1300 ANSI
VT660K	XGA, 2000 ANSI

plug and project
automatic set up
automatic keystone correction
extremely quiet
great performance and price
award winning service and support



For more information, call (800) NEC-INFO
or visit www.necvisualsystems.com

NEC is a registered trademark of NEC Corporation.
All other trademarks are the property of their respective owners.
All specifications subject to change without notice.

NEC Solutions (America), Inc.
Visual Systems Division
1250 Arlington Heights Rd., Suite 500
Itasca, IL 60143-1248

Empowered by Innovation



quick, simple, hassle-free

No matter where your next visual display opportunity takes you, a quick easy set up will put you instantly at ease so you're sure to impress. The new VT465, VT560 and VT660K ultra-portable/desktop projectors combine simplicity with flexibility for a carefree, confident use every time.

The VT Series lets you plug in and project in seconds. Intuitive design with direct access lets you connect and switch from a variety of sources with the simple touch of a button. Color coded connectors make set up a breeze. Automatic keystone correction ensures you'll have a square image regardless of the projector's angle. Advanced AccuBlend™ automatically synchronizes with virtually any type of computer so you always get a clear, bright, perfect image. So automatic, the VT Series just about makes the presentation for you!

While it's simple to set up and operate, the VT is flexible enough to handle the toughest assignments, making it ideal for education, business, government and even home use. With its awesome video display your images will be spectacular when viewed from a DVD, VCR, game console or computer. This series can handle it all effortlessly. Computer resolutions SVGA through UXGA are all supported and it's HDTV compatible, too.

Because of its low profile and extremely quiet operation, the VT Series ensures your display is the center of attention, not your projector. The short throw lens lets you get the projector out of the way by moving it to the front of the room. And NEC's unique 64-step image magnification allows you to zoom in on information located anywhere on your screen to emphasize key points so you can keep your audience with you every step of the way.

While big on features, the VT Series is extremely small on price. As a matter of fact, they are among the most affordable in the industry.

From the lens to the connector panel, our environmentally friendly projectors are precision crafted for performance, quality and long-term reliability. The new VT Series projectors are covered by a 3-year limited parts and labor warranty. Should a need arise, rest assured that NEC will be there with award winning service and support including InstaCare®, InstaCareXpressSM, and TravelCareSM.

VT465-SVGA, 1800 ANSI

VT560-XGA, 1300 ANSI

VT660K-XGA, 2000 ANSI

plug in and project

automatic set up

automatic keystone correction

intuitive design

extremely quiet

great performance and price

lightweight for travel

wireless remote with mouse control

carrying case

intuitive design

The color coded input panel simplifies source connections. Direct access keys on the projector control panel and remote control make source changes as easy as touching button.

greater connectivity means more flexibility

With best-in-class connectivity, the VT Series is as flexible as you are. You can use a variety of inputs including DVD, VCR, computer, game console and more, they are also HDTV compatible. Some options include:

- Composite video with matching L/R audio input
- S-Video with matching L/R audio input
- RGB with audio input
- Variable audio output
- RGB Output
- USB output enables wireless mouse control of computer

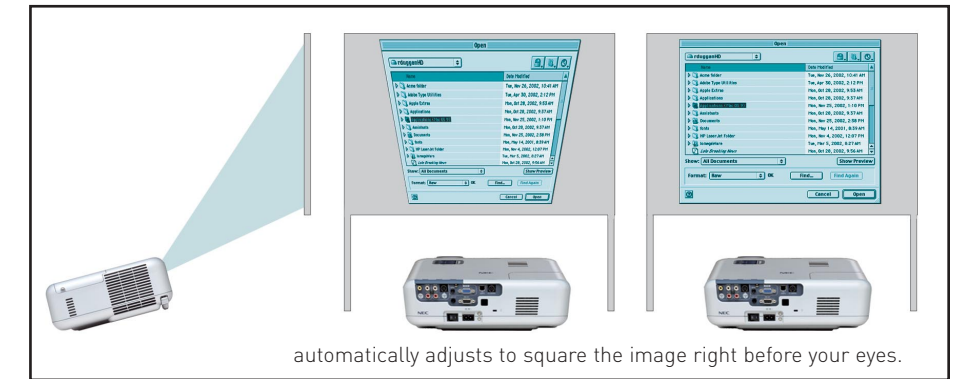
automatic keystone correction

Automatic keystone correction ensures an instantly square image is projected even when the projector is set up at a steep offset angle to the screen.

quick connections



auto keystone correction



special features

short focal lens

The short focal lens allows you to place the projector closer to the screen at the head of the table for a perfect image. This gives you the flexibility to present in large or small environments.

one-touch source selections

Just one simple touch will connect you to the source you need. Color coded connectors for added ease of set up.

variable audio output

The VT series features audio inputs for each source. This allows the projector to be used as a switcher and enables the user to control external speaker volume with the projector remote control. Color coded connectors to simplify.

serving special needs and the environment.

Using a projector should be an enjoyable experience. Responding to the latest government requirements, the VT Series is ADA508 compliant. This allows users to select the display color of the menu settings. In addition, Eco-Mode increases lamp life up to 50% so you can conserve resources and save money.

whisper quiet operation and long life lamp.

The VT Series features extremely low fan noise at 32dB in Eco-Mode, making them among the quietest models available.

environmentally friendly and conserves energy.

We take our responsibility to the environment very seriously, especially since our products are used worldwide. We continually look for ways to improve the efficiency of our projectors with features like EcoMode that reduces overall projector power consumption and help conserve energy. In addition our projector factories are certified to meet the ISO environmental quality standard (ISO 14001) and are ISO9001 and ISO9002 certified.



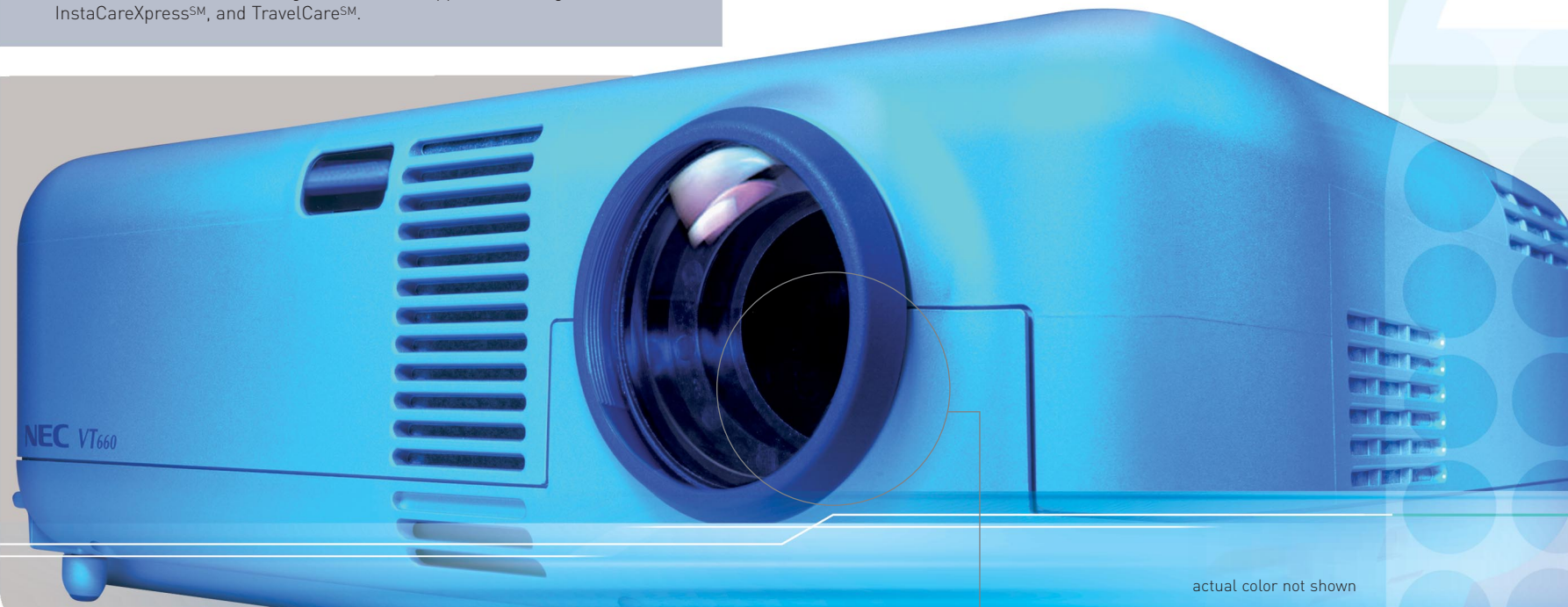
ECO-MODE



JQA-EM1665



JQA-1729



actual color not shown

variable audio output (VAO) enables remote control of powered external speaker volume



short focal lens



"Mr. Robinson" NEC Idol Contest Winner. Video submitted by Newport Coast Elementary School.

one-touch source selection buttons



quick, simple, hassle-free

No matter where your next visual display opportunity takes you, a quick easy set up will put you instantly at ease so you're sure to impress. The new VT465, VT560 and VT660K ultra-portable/desktop projectors combine simplicity with flexibility for a carefree, confident use every time.

The VT Series lets you plug in and project in seconds. Intuitive design with direct access lets you connect and switch from a variety of sources with the simple touch of a button. Color coded connectors make set up a breeze. Automatic keystone correction ensures you'll have a square image regardless of the projector's angle. Advanced AccuBlend™ automatically synchronizes with virtually any type of computer so you always get a clear, bright, perfect image. So automatic, the VT Series just about makes the presentation for you!

While it's simple to set up and operate, the VT is flexible enough to handle the toughest assignments, making it ideal for education, business, government and even home use. With its awesome video display your images will be spectacular when viewed from a DVD, VCR, game console or computer. This series can handle it all effortlessly. Computer resolutions SVGA through UXGA are all supported and it's HDTV compatible, too.

Because of its low profile and extremely quiet operation, the VT Series ensures your display is the center of attention, not your projector. The short throw lens lets you get the projector out of the way by moving it to the front of the room. And NEC's unique 64-step image magnification allows you to zoom in on information located anywhere on your screen to emphasize key points so you can keep your audience with you every step of the way.

While big on features, the VT Series is extremely small on price. As a matter of fact, they are among the most affordable in the industry.

From the lens to the connector panel, our environmentally friendly projectors are precision crafted for performance, quality and long-term reliability. The new VT Series projectors are covered by a 3-year limited parts and labor warranty. Should a need arise, rest assured that NEC will be there with award winning service and support including InstaCare®, InstaCareXpressSM, and TravelCareSM.

VT465-SVGA, 1800 ANSI

VT560-XGA, 1300 ANSI

VT660K-XGA, 2000 ANSI

plug in and project

automatic set up

automatic keystone correction

intuitive design

extremely quiet

great performance and price

lightweight for travel

wireless remote with mouse control

carrying case

intuitive design

The color coded input panel simplifies source connections. Direct access keys on the projector control panel and remote control make source changes as easy as touching button.

greater connectivity means more flexibility

With best-in-class connectivity, the VT Series is as flexible as you are. You can use a variety of inputs including DVD, VCR, computer, game console and more, they are also HDTV compatible. Some options include:

- Composite video with matching L/R audio input
- S-Video with matching L/R audio input
- RGB with audio input
- Variable audio output
- RGB Output
- USB output enables wireless mouse control of computer

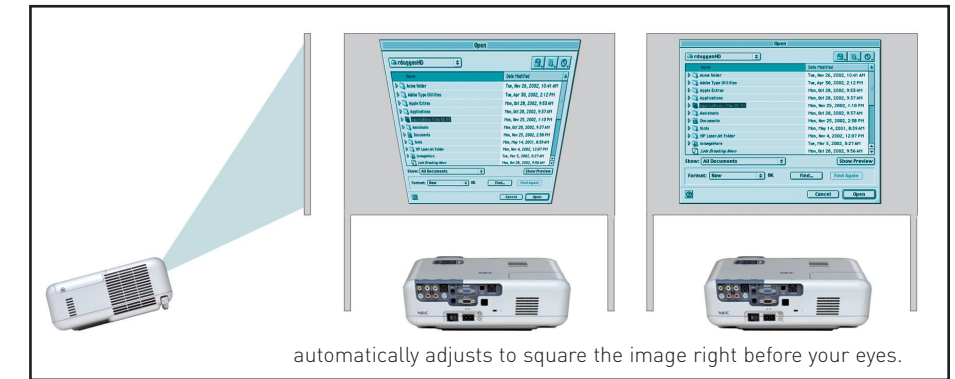
automatic keystone correction

Automatic keystone correction ensures an instantly square image is projected even when the projector is set up at a steep offset angle to the screen.

quick connections



auto keystone correction



special features

short focal lens

The short focal lens allows you to place the projector closer to the screen at the head of the table for a perfect image. This gives you the flexibility to present in large or small environments.

one-touch source selections

Just one simple touch will connect you to the source you need. Color coded connectors for added ease of set up.

variable audio output

The VT series features audio inputs for each source. This allows the projector to be used as a switcher and enables the user to control external speaker volume with the projector remote control. Color coded connectors to simplify.

serving special needs and the environment.

Using a projector should be an enjoyable experience. Responding to the latest government requirements, the VT Series is ADA508 compliant. This allows users to select the display color of the menu settings. In addition, Eco-Mode increases lamp life up to 50% so you can conserve resources and save money.

whisper quiet operation and long life lamp.

The VT Series features extremely low fan noise at 32dB in Eco-Mode, making them among the quietest models available.

environmentally friendly and conserves energy.

We take our responsibility to the environment very seriously, especially since our products are used worldwide. We continually look for ways to improve the efficiency of our projectors with features like EcoMode that reduces overall projector power consumption and help conserve energy. In addition our projector factories are certified to meet the ISO environmental quality standard (ISO 14001) and are ISO9001 and ISO9002 certified.



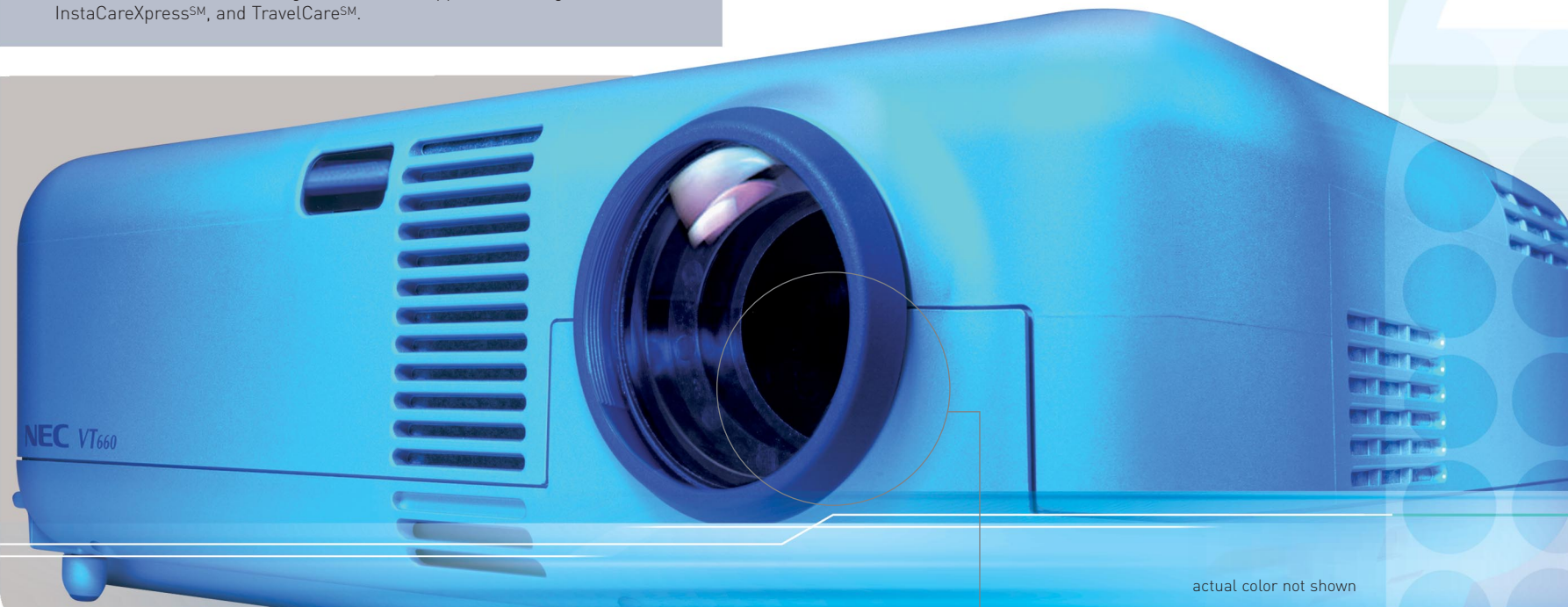
ECO-MODE



JQA-EM1665



JQA-1729



actual color not shown

variable audio output (VAO) enables remote control of powered external speaker volume



short focal lens



"Mr. Robinson" NEC Idol Contest Winner. Video submitted by Newport Coast Elementary School.

one-touch source selection buttons



VT465/VT560/VT660K



Accessories



Additional Features

Eco-mode Technology	Increase lamp life through light output adjustments
Automatic Keystone Correction	Projector automatically corrects keystone distortions
ADA 505 Compliant	Features monochrome menu display setting for color blind users
AutoSense	Projector automatically syncs with any computer signal and features one touch image optimization
Intuitive Design	Designed to be used as a shared device - inputs and cables are color coded, direct access buttons on the projector cabinet and on remote control.
Monitor Output	Allows you to connect a local monitor directly to the projector
VORTEX Technology Plus	Provides uncompromising display of video and data. Improves white level, color accuracy, dynamic range, and display of varying levels of black in an image. Picture management enables adjustment of RGB for display of personal color preferences.
Cabinet Key Lock	Restricts access to projector cabinet controls
Image magnification	64 step image magnification with location control

Optical

LCD Panels	0.7" x 3, p-Si TFT	
Native Resolution	VT465 - SVGA (800 x 600 pixels) VT560 & VT660K - XGA (1024 x 768 pixels)	
Resolutions Supported	VGA through UXGA with Advanced AccuBlend	
Light Output	VT465 - 1800 standard ANSI Lumens, 1500 Eco-mode VT560 - 1300 standard ANSI Lumens, 1040 Eco-mode VT660K - 2000 standard ANSI Lumens, 1600 Eco-mode	
Image Size	21" to 300" diagonal	
Projection Distance	29" to 435"	
Lamp (NSH)	205 watt standard, 164 watt Eco-mode	
Lamp Life	3,000 hours in Eco-mode, 2,000 hours in standard	
Keystone Correction	Automatic (±30 degrees)	

Electrical

Inputs	RGB	Mini D-Sub 15-pin for computer or component video (optional cable)
	S-Video	NTSC, PAL, PAL-60, SECAM, NTSC 4.43, PAL-N, PAL-M
	Composite Video	NTSC, PAL, PAL-60, SECAM, NTSC 4.43, PAL-N, PAL-M
	Audio	(2 Pair) L/R RCA for video and S-Video Stereo mini jack for computer
Outputs	HDTV Compatible	1080i, 1080i/50Hz, 720p, 480p, 480i
	Monitor Output	Mini D-Sub 15-pin
	USB	USB output to PC for wireless remote control
Sync Range	Variable Audio Out	Stereo mini jack for connection to external powered speakers
	Horizontal	15-100 kHz
Power Requirements	Vertical	50-120 Hz
	Power Consumption	100-120V / 200-240 VAC, 50 Hz/60Hz
Built-in Speaker	270 W standard, 220 W Eco-mode	
Audible Noise	1W monaural	
	37dB standard, 32dB in Eco-mode	

Mechanical

Installation Orientation	Floor/Front, Floor/Rear, Ceiling/Front, Ceiling/Rear	
Dimensions	12.2" (W) X 9.7" (D) X 3.5" (H), 310mm X 230mm X 89mm	
Weight	6.6 pounds, 2.9Kg	
Regulations	USA: UL1950, FCC Class B Canada: CSA950 (C-UL)	
Warranty	Registered owners receive a 3-year limited parts and labor warranty. The first year is covered by InstaCare. InstaCare provides the original owner limited concurrent 3-business day repair/return or next business day exchange. The lamp, when used under normal operating conditions is warranted for 1000 hours or six months, whichever comes first.	

Product/Accessories Order Information

Order Code	Description
VT465	SVGA, 1800 ANSI Lumens projector
VT560	XGA, 1300 ANSI Lumens projector
VT660K	XGA, 2000 ANSI Lumens projector
TRAVELPRO200	Leather rolling case for easy transport through airport. Bag contains compartments for projector, laptop and paper, stores in airplane overhead
VT60ATAPRO	Rugged case for shipment and airport check-in
VT60ROLLER	Platinum, high impact plastic rolling case for projector, stores in airplane overhead
ADP-CV1	Component video adapter
VT60CM	Ceiling mount featuring security screws
VT60LP	Replacement lamp
LTSCREEN	50" diagonal table top screen in compact carrying case
SC200	Security cable locks projector table or cart

Optional Warranty Programs

INSTACAREEXT02	Second year of InstaCare Service Program
INSTACAREEXT03	Second and third years of InstaCare Service Program

easy **setup**
puts you at
ease

NEC VT465, VT560 and VT660K
ultra-portable/desktop projectors

VT465	SVGA, 1800 ANSI
VT560	XGA, 1300 ANSI
VT660K	XGA, 2000 ANSI

plug and project
automatic set up
automatic keystone correction
extremely quiet
great performance and price
award winning service and support



For more information, call (800) NEC-INFO
or visit www.necvisualsystems.com

NEC is a registered trademark of NEC Corporation.
All other trademarks are the property of their respective owners.
All specifications subject to change without notice.

NEC Solutions (America), Inc.
Visual Systems Division
1250 Arlington Heights Rd., Suite 500
Itasca, IL 60143-1248