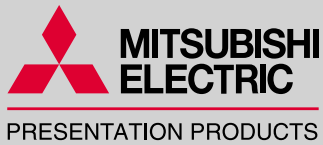


1000 ANSI LUMENS

6.4 POUNDS

XGA OR SVGA



XL1U
SL1U
COLORVIEW
PROJECTORS

Uncompromising
Performance In
An Affordable,
Compact Design.

ColorView
NATURAL COLOR MATRIX™

sRGB



The XL1 and SL1 from Mitsubishi Digital Electronics are microportable LCD projectors that offer 1000 ANSI lumens in both XGA and SVGA models. Each projector is equipped with many advanced features, including Mitsubishi's exclusive ColorView™ Natural Color Matrix and sRGB compliance.

- 1000 ANSI lumens for exceptional brightness
- Exclusive, award-winning ColorView Natural Color Matrix for rich, vivid colors
- sRGB color profile technology ensures standard, uniform color reproduction regardless of the type of display used
- Intelligent Room Illumination Sensor (IRIS®) senses room brightness and automatically adjusts the projector's contrast and image controls
- Native resolution of 1024 x 768 XGA, with 1280 x 1024 SXGA maximum (compressed) (XL1); 800 x 600 SVGA with 1024 x 768 XGA maximum (compressed) (SL1)
- Dual lamp operations mode allows users to conserve lamp life, lower the operating temperature and noise level, extending the overall life of the projector
- Three year parts and labor warranty, 90-day warranty on the lamp, toll-free technical support, plus for the XL1, a three-year Emergency Roadside Assistance (ERA) program that guarantees free replacement product shipped overnight for next business day delivery when and where available

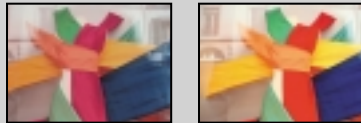




PRESENTATION PRODUCTS

COLORVIEW™ NATURAL COLOR MATRIX

Mitsubishi's award-winning ColorView enables the XL1U and SL1U to produce vivid colors that precisely match their real-life counterparts, as well as giving you the ability to precisely adjust color saturation and control color tones.



Without ColorView With ColorView

PRECISE COLOR REPRODUCTION WITH sRGB



Developed to ensure standard, uniform color reproduction regardless of the type of display used, sRGB color profile uses color coordinates common to all display technologies. As a result, it eliminates the hue variations that occur between different display systems and accurately matches the way colors look in real life.



IRIS® (INTELLIGENT ROOM ILLUMINATION SENSOR)

Room illumination can have a significant effect on the quality and accuracy of color reproduction on-screen. The brighter the room, the duller the color. The XL1U's and SL1U's built-in IRIS® automatically detects light volume and color density, automatically adjusting mid-range color tones as required for optimal color reproduction under any lighting conditions.

A change in external light makes the room brighter.



Without IRIS



With IRIS

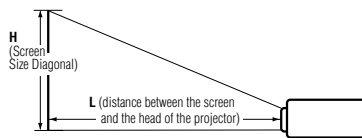
XL1U/SL1U
COLORVIEW PROJECTORS

SPECIFICATIONS	XL1U	SL1U
Display Technology	0.7" Polysilicon LCD panel x 3	
Resolution	True XGA 1024 x 768 with compression for 1280 x 1024 SXGA max.	True SVGA 800 x 600 with compression for 1024 x 768 XGA max.
Brightness	1000 ANSI Lumens	
Colors	16,770,000 colors	
Zoom/Focus	Manual control (zoom ratio: 1.2 : 1)	
Picture Size	30"~ 300" diagonal (100"=3.79 m)	
Lamp	Part Number VLT-XL1LP; Type:150 W UHP lamp	
Computer Compatibility	VGA ~ SXGA (640 x 400 ~ 1280 x 1024), True: 1024 x 768, Sync on green available	VGA ~ XGA (640 x 400 ~ 1024 x 768), True: 800 x 600, Sync on green available
Video Compatibility	NTSC/NTSC 4.43/PAL (including PAL-M, N)/SECAM/PAL-60/DVD (component)/HDTV (720p, 1080i)	
Input Terminals	PC: mini D-sub 15 pin x 1, Video: RCA + S video x 1, PC/video audio: stereo RCA x 1	
Output Terminals	RGB: mini D-sub 15 pin x 1	
Communication Terminals	RS-232C x 1 (direct command is available, DIN 8 pin), mouse terminal for USB	RS-232C x 1 (direct command is available, DIN 8 pin)
Audio Speaker	1 W Mono	
Scanning Rates	Horizontal: 15 - 82 kHz Vertical: 50 - 85 Hz, Dot clock: 140 MHz	Horizontal: 15 - 69 kHz Vertical: 50 - 85 Hz, Dot clock: 100 MHz
Fan Noise	34 dB	
Power Consumption	230 W	
Dimensions (W x H x D)	9.3 x 3.7 x 12.4" (237 x 94 x 315 mm) (including feet)	
Weight	6.4 lbs (2.9 kg)	
Power Supply	AC100 ~ 240V/±10%, 50/60 Hz	
Safety Approvals	CSA, CSA NRT L/C, FCC Class B	
Warranty	Three-year parts and labor; 90 days on lamp. XL1U also includes three-year Emergency Roadside Assistance program that guarantees free replacement projector shipped overnight for next business day delivery when and where available	
Accessories	Standard: 2 AC power cords, remote control, 2 batteries for remote, AV cable, RS-232C cable, PS/2 adapter, RGB cable, USB cable, user manual, carrying case, quick reference card Optional: Spare lamp module (VLT-XL1LP), ceiling mount (XL1CM), soft roller case (UPX70LCW), hard shell ATA case (UPX70ATA)	
Special Features	ColorView Natural Color Matrix; sRGB color compliance; IRIS control sensor; CineView™ Video Line-Doubler; digital keystone adjustment; manual zoom and focus lens	

For more information on the XL1U, SL1U or any of Mitsubishi's other projectors or presentation products, contact Mitsubishi Digital Electronics today. Detailed technical specifications available upon request.

Projector Part Numbers: XL1U (XGA model)
SL1U (SVGA model)

Screen (H) Screen Size (inches diag.)	Distance from screen (L) (Approximate)			
	Tele(Longest) (inches)	(meters)	Wide(Shortest) (inches)	(meters)
30	51.0	1.3	-	-
40	70.0	1.8	59.0	1.5
60	106.0	2.7	91.0	2.3
80	141.0	3.6	118.0	3.0
100	177.0	4.5	150.0	3.8
120	212.0	5.4	177.0	4.5
140	252.0	6.4	208.0	5.3
160	287.0	7.3	240.0	6.1
180	322.0	8.2	268.0	6.8
200	358.0	9.1	300.0	7.6
300	535.0	13.6	450.0	11.4



To find approximate distance between the projector and the screen, multiply the width of the screen x 2.2 (min.), and x 2.9 (max.).

Refer to the diagonal size chart for recommended distances.

©2001 Mitsubishi Digital Electronics America, Inc. Standard features, options and specifications subject to change without notice.

Microsoft, Windows, and the Windows logo are registered trademarks of Microsoft Corporation. Mac and the Mac logo are trademarks of Apple Computer, Inc, registered in the U.S. and other countries. All other trademarks or registered trademarks are the property of their respective holders.

Printed on 50% recycled paper including 20% post-consumer fibers, processed chlorine free. Printed with vegetable based inks.

Mitsubishi Digital Electronics America, Inc.
Presentation Products Division
9351 Jeronimo Road
Irvine, CA 92618
Toll Free: 888-880-6351
email: ppinfo@mdea.me.com

Technical Support:
Toll Free: 888-307-0309
Email: tsupport@mdea.me.com

Canada:
Mitsubishi Electric Sales Canada Inc.
Information Technologies Group
Markham, Ontario
905-475-7728