

Specifications

Model number	PLV-Z4
LCD panel system	Three 0.7-inch (1.78 cm) TFT active matrix type panels
Optical system	Dichroic mirror separation/prism
Panel size	Three 0.7-inch panels, 16:9 aspect ratio
Panel resolution	1,280 x 720 dots
Number of pixels	2,764,800 (921,600 x 3)
Pixel arrangement	Stripes
Projection lens	F2.0 to F3.0, f=21.3 to 42.6 mm, 1x to 2.0x manual zoom and focus
Projection lamp	145 W UHP lamp
Screen size	Adjustable from 40 to 300 inches
Color reproduction	Approx. 1,070 million colors
Throw distance	From 1.2 m to 9.2 m
Picture brightness	1,000 lm (Powerful mode)
Uniformity	85% (Corner to center)
Contrast ratio	7,000:1 (Vivid mode)
Fan noise	22 dBA* (Lamp mode: Eco) to 26 dBA (Lamp mode: Normal)
Scanning frequency	H sync: 15-80 kHz, V sync 50-100 Hz
Dot clock	100 MHz or less
Color systems	PAL, SECAM, NTSC, NTSC 4.43, PAL-M, PAL-N
Video signals	HDMI, Composite, S-Video, Component
Video terminals	HDMI terminal 19-pin x 1, RCA type x 1 (Video), RCA type (Y, Pb/Cb, Pr/Cr) x 2, Mini DIN 4-pin x 1 (S-Video)
Computer compatibility	WXGA/SXGA/XGA/SVGA/VGA/MAC
Computer terminals	Analog RGB x 1 (Mini D-sub 15-pin)
Communication terminal	Service port (RS-232C)
Operating temperature	5 to 35 C
Rated power supply	100-240 V AC, 50 Hz/60 Hz auto voltage selection
Power consumption	210W (Lamp:Normal), 180W (Lamp:Eco), 0.5W (Stand-by)
Dimensions	382 (W) x 126.8 (H) x 304.3 (D) mm
Net weight	5.0 kg (11.0 lbs.)
Standard accessories	AC power cord (2 m), Wireless remote control unit, Video cable (3 m)

Safety Precautions *Specifications subject to change without notice.

- Do not install the LCD projector in areas exposed to water, humidity, dust, oil or smoke, or in close proximity to heat sources.
- Make sure the heat vents are not blocked. Fire, electrical shock or unit malfunction may result if the above precautions are neglected.
- Do not look through the lens while projecting, as damage to the eyes could result. Take special care when children are close by.

Remarks

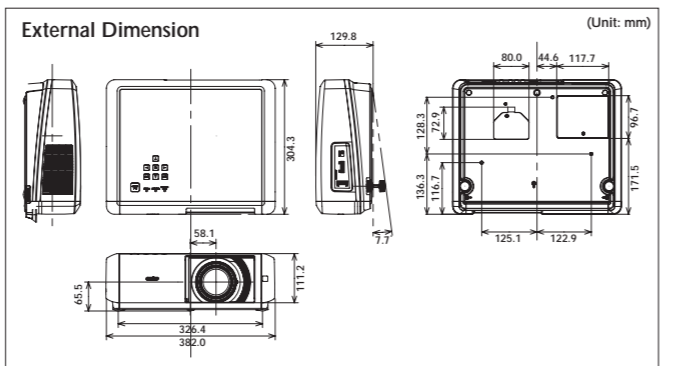
- Spare LCD projector parts are kept in stock for at least eight years after the product is discontinued.
- LCD panel manufacturing requires extremely high-precision technology, with pixels having a 99.99% quality control rating. However, there does exist a 0.01% or smaller possibility of dead pixels or constantly-lit pixels.
- Please note that product colors in the brochure may differ slightly from those of actual products.
- All screen pictures in the brochure are simulated.
- All company and product names are the trademarks or registered trademarks of their respective owners.
- Product appearance and specifications are subject to change without notice.
- In Pure Cinema mode or with the lamp set to Eco mode. (when not using ceiling-mount fittings or a wall-mounting kit).

Further details regarding this product can be accessed at <http://www.sanyo-lcdp.com/english/>

*Caution: please consult the instruction manual to ensure safe and proper operation of the product.

Distributed by:

ProSelecta View :: Compare :: Select - www.ProSelecta.com



Options

Ceiling mounting

Low ceiling metal fitting POA-CHS-US01

High ceiling metal fitting POA-CHL-UL01

Z4 Bracket assembly POA-CHB-Z2

Installation example

Lamp for exchange

POA-LMP94

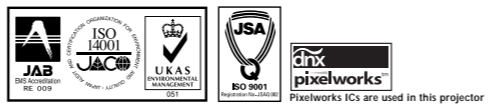
Wall-mounting Kit

POA-CH-EX02

Installation example

Optional cables

Product	HDMI cable
Model number	POA-CA-HDMI



Z Evolution. Xtra Quality.

LCD Home Theater Projector

Z4



SANYO

PLV-Z4





Light, shadow, and brightness and darkness.

Patterns formed by sunlight and shade... The eye-catching contrast produced by backlighting...

The interplay of light and dark creates images that seem real enough to lift off the screen.

In the movies we watch, the clever manipulation of highlights and shadows can create enormous emotional power.

That's the kind of power you get with the Z series.

Z4

LCD Home Theater Projector





Emotional Power

With images, the richer the expression and the more detailed the nuances, the more powerful the emotion. The Z4's bright, vivid images let you experience home theater viewing with tremendous emotional impact.



Positioning Flexibility

Naturally, you want a product whose style enhances your room decor. And you don't want to be limited in your choice of installation locations. The attractive Z4 looks good in any room and can be placed just about anywhere. This positioning freedom was one of our focus points in its development.



High Definition

TopazReal

Total image solution "TopazReal"

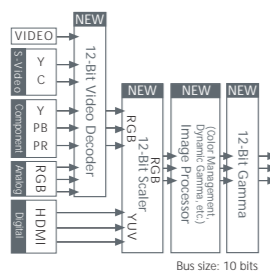
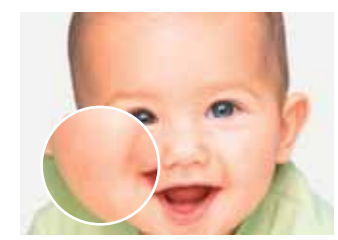
- 12-Bit Digital Processor
- Twin Aperture
- 3D Color Management

12-Bit Digital Image Processing

In the Z4, the ICs that determine image quality—such as the video decoder, scaler and gamma curve generator—all use 12-bit digital processing. The result is reproduction of deeper, richer images. And thanks to greatly improved calculating precision, the Z4 renders even tiny nuances in expressive detail.



12-bit digital processor



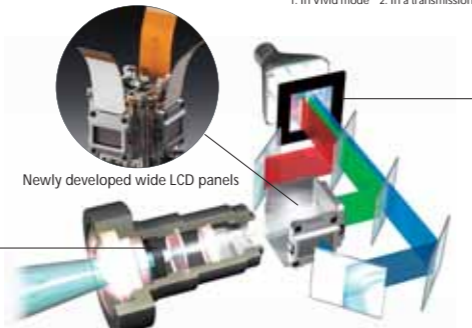
Twin Iris-7000:1¹ Contrast

The Z4 boasts the industry's first twin-iris system.*² Integrating a lens aperture and lamp aperture, this new system delivers true-to-life images with outstanding gradation in a variety of viewing environments. Also, the synergetic effect of a mechanism that varies lamp brightness with a newly designed LCD panel achieves contrast as high as 7000:1.*¹ You enjoy crisp, bright, high-contrast images no matter what the room lighting.

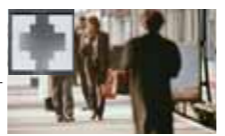
*1: In Vivid mode *2: In a transmission-type LCD projector, as of September 9, 2005



64-step adjustable (fixed)



Lens Aperture: The motor-driven aperture optically adjusts the contrast, and makes the setting automatically according to the image mode selection. Or, you can use the remote control to precisely adjust the contrast from 100% to 60%, in 64 steps.



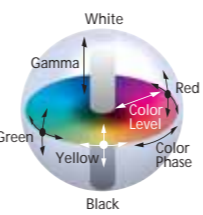
Continuously adjustable (variable)



Lamp Aperture: By analyzing the brightness of the scene and using the information to control the lamp, this advanced function both brightens the image and emphasizes the feeling of contrast.

3D Color Management

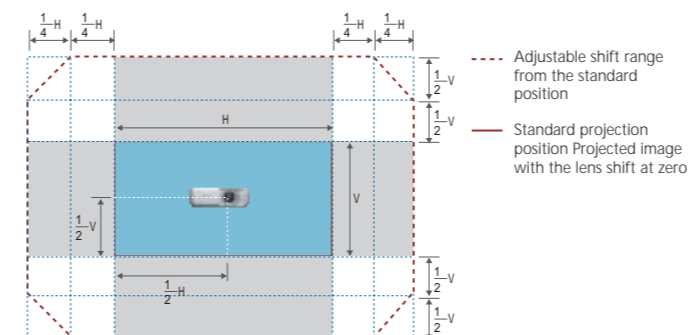
You can adjust and save the level, hue and gamma curve of any color. Fine-tuning the image settings this way lets you compensate for the specific conditions in each viewing environment.



Flexibility

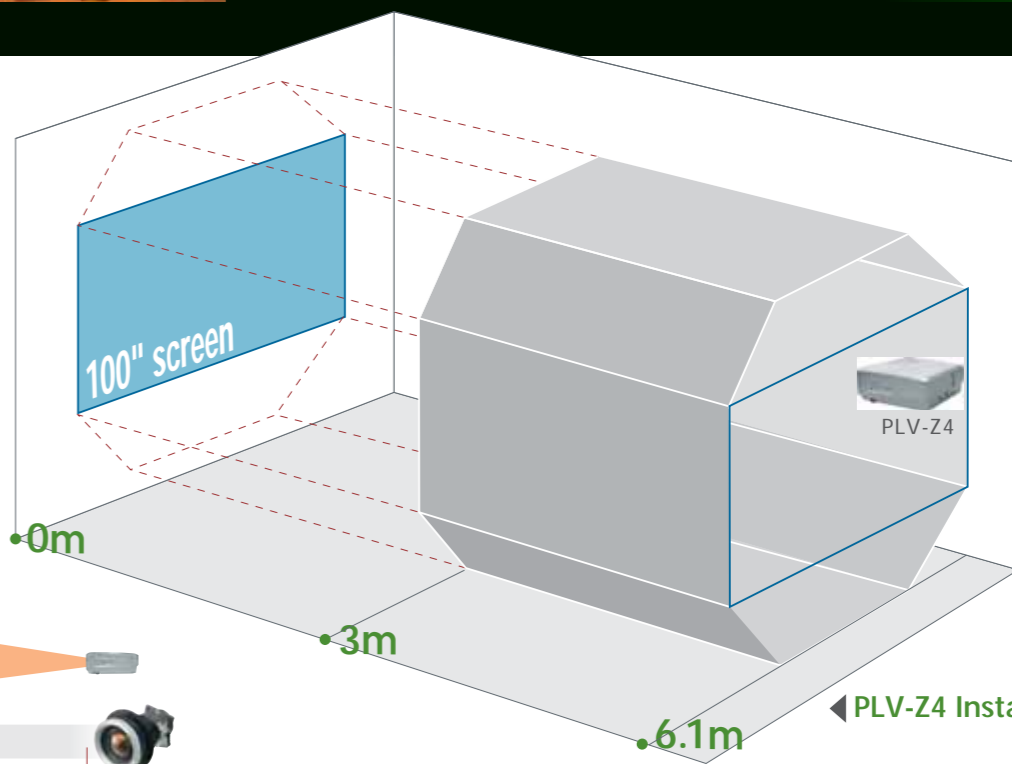
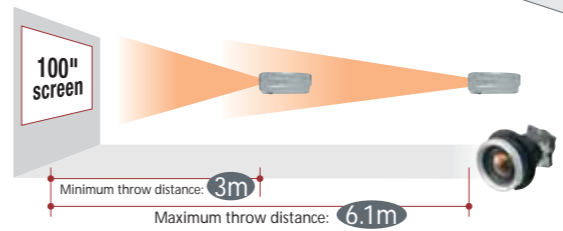
Vertical and Horizontal Lens Shift

The horizontal and vertical lens shift function, which can be adjusted using two small wheels on the side of the projector, allows you to adjust the screen projection easily, without having to move the actual body of the projector.



2x Zoom Lens

With its 2x optical zoom, the Z4 projects images onto a 100" screen from a throw distance of 3 to 6.1 meters.



Digital Keystone Correction

This compensates for keystone (trapezoidal) picture distortion up to ±20% vertically, for situations where vertical or horizontal lens shift alone isn't enough.



PLV-Z4 Installation area image



Comfort

Quieting Function Lets You Enjoy the Show

When the suspense is building or the heroine is whispering or the imagery is especially beautiful, the last thing you need is a distracting sound from your AV system. The Z4 features a quieting function that makes it easy to lose yourself in the drama.



Functionality

Fun to Use, a Joy to Own

Watch any AV source you want. Play video games on the large screen. Adjust the picture quality to match your room. The Z4's easy-to-use functions make it a great match for so many kinds of entertainment.

Silent Design—Only 22 dB

No matter how beautiful the images are, a noisy projector pulls you away from the picture. In the Z4, we redesigned the internal structure and maximized cooling efficiency to achieve super-quiet performance. By controlling the fan's rpm and using Eco mode, we reduced operating noise to 22 dB*¹ (approx.) -- best in the industry for an LCD projector.*² Even in Normal mode, the Z4 operates at a quiet 26 dB.*³



30 dB: A pendulum on a wall clock, or a whisper
20 dB: The sound of brushing against tree leaves

*1: In Pure Cinema mode or with the lamp set to Eco mode. (When not using ceiling-mount fittings or a wall-mounting kit).
*2: Transmission-type LCD projector, as of September 9, 2005.
*3: In Powerful mode or with the lamp set to Normal mode.

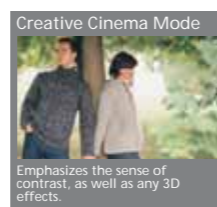
Motor-Operated Slide Shutter



The shutter can be opened or closed automatically by remote control. This means you will no longer have to manually attach or remove the lens cap when the projector is mounted on the ceiling or in a high location that is difficult to reach. The shutter also protects the lens from dust.

7 One-Touch Pre-Set Mode

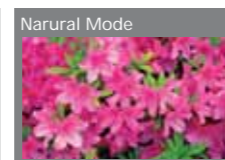
Seven One-Touch Preset Modes The PLV-Z4 provides seven one-touch presets to optimize color, brightness, and contrast levels. Simply select the mode best suited to your particular viewing needs.



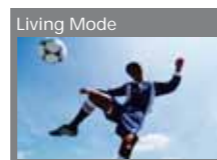
Creative Cinema Mode
Emphasizes the sense of contrast, as well as any 3D effects.



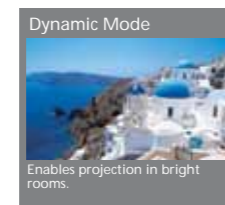
Pure Cinema Mode
Reduces excess gradation contrast, for a rich and smoothly graded picture tone.



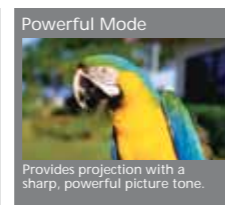
Natural Mode
Offers faithful reproduction of the input signal.



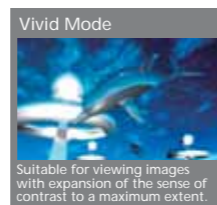
Living Mode
Best suited to projecting sports or dramas from TV.



Dynamic Mode
Enables projection in bright rooms.



Powerful Mode
Provides projection with a sharp, powerful picture tone.



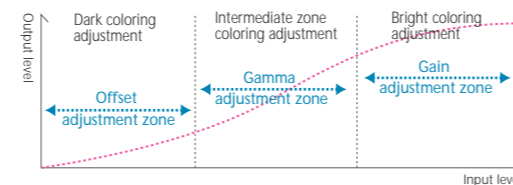
Vivid Mode
Suitable for viewing images with expansion of the sense of contrast to a maximum extent.

Advanced Mode

The Advanced Mode provides a range of adjustments to match your viewing requirements. Adjustments include RGB gain, RGB gamma, RGB offset adjustment, lens iris adjustment, outline compensation, black level expansion, and contrast enhancement.

RGB Gain, RGB Gamma and RGB Offset

The gain, gamma and offset can be controlled separately for each of the RGB colors to attain more subtle color reproduction. This allows you to find settings that more closely match your own preference.



Outline Compensation

The signals that form image outlines can be compensated in 4 steps (OFF/L1/L2/L3).

Black Level Expansion

This function gives a crisper appearance to blacks in bright areas. It can be set in 4 steps (OFF/L1/L2/L3).

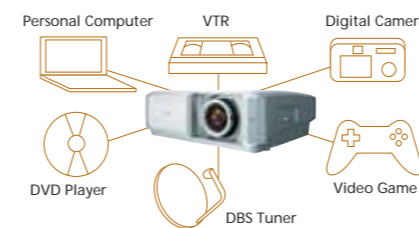
Contrast Enhancement

The contrast in bright scenes can also be adjusted in 4 steps (OFF/L1/L2/L3).

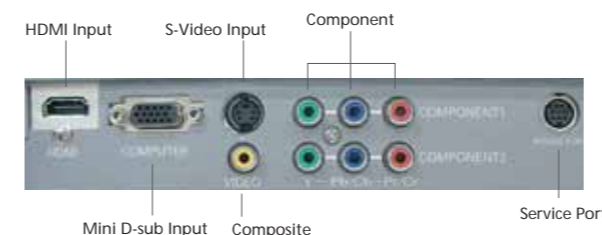
Note: Some of the above adjustments cannot be made due to the input signal or input mode.

HDMI and Two Component Inputs

The Z4 comes equipped with an HDMI (High Definition Multimedia Interface) terminal. Along with its two other sets of component inputs (including Y/CbCr 3-pin terminals), the HDMI terminal expands your viewing options.



HDMI™
HIGH-DEFINITION MULTIMEDIA INTERFACE
HDMI is a digital interface standard for AV equipment. It was adapted from DVI (Digital Visual Interface) display connection technology, which is based on TMDS (Transition-Minimized Differential Signaling). Note: HDMI, the HDMI logo and High-Definition Multimedia Interface are trademarks or registered trademarks of HDMI Licensing LLC.



New GUI Menu



All major operations are displayed in a list, with a handy operating guide shown at the bottom of the menu.

Multifunction Remote Control with Full Light-up Function



The illuminated buttons on the multifunction remote control ensure easy operation, even in the dark.

Anti-Dust Features



The electrostatic air filter prevents dust particles from being sucked into the inside of the projector. The included blower can also be used to blow any dust that does adhere to the inside area from the maintenance holes on the bottom of the projector.

High-Color-Purity Optical System

This system divides the lamp light into the three primary colors of red, blue and green, and projects them separately onto the screen. By eliminating color mixing, the Z4 faithfully reproduces the colors of high-resolution digital video software, such as DVD.

3D AUCC for High-Resolution Images

The 3D Automatic Uniformity Correction Control (AUCC) circuit ensures a uniform projected image, balancing uneven color and brightness gradations for more natural image displays.

Progressive Scan

A progressive scan circuit ensures superb, high-resolution video images.

A Wide Variety of Projection Mode

You can choose the projection mode from a total of eight modes: full, full through, zoom, superimpose, normal, normal through, wide 1 and wide 2.

"My Screen" Function

This lets you easily capture an image, such as your original logo, and project it onto the screen as a startup or default screen.