

PRINT SAMPLE

SANYO

Ultra Portable Multimedia
LCD Projector

PLC-XU22/20, SU20 Series



THE MOBILE PROJECTOR



Mobility Power that Really Shines!

For professional presentations with impact, look to SANYO Ultra Portable LCD Projector.

Feather-light, this A4-file size projector has a magnesium die-cast body and weighs only 3.9 kg*1.

But mobility is only half of its strength. In today's global world of business, image is everything.

And image is where the SANYO Ultra Portable LCD Projector really shines.

3 LCD panels reproduce colors of the original images faithfully and deliver highly detailed and

bright images at 1,200 ANSI Lumens*2. Mobility plus highly detailed imaging, SANYO Ultra

Portable LCD Projector gives you the power to create professional mobile presentations.



Bringing Mobility to the Professional Projector

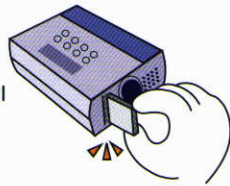


Lightweight and Compact Magnesium Die-Cast Body

With an incredibly compact A4-file size body (239 (W) x 90 (H)^{*8} x 323 (D) mm) and weighing only 3.9 kg^{*1}, presenting anywhere, anytime with this projector is never a problem.

PCMCIA Card Slot (Type II)^{*9} for Effective Presentations

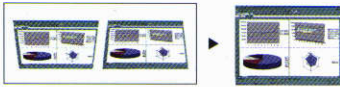
Leave your computer in the office and still make presentations thanks to the PCMCIA Card Slot. SANYO Ultra Portable LCD Projector can project JPEG and bitmap files from PC cards including SmartMedia™ Memory Cards used in SANYO digital cameras with an adaptor^{*10}. Create even more effective presentations by using the MCI (Media Card Imager)^{*11} file converter software included with the projector.



Keystone Correction

Elevating a projector results in distorted images being displayed in a trapezoid shape. Keystone Correction automatically addresses this problem by digitally altering the projection to produce undistorted images.

- XU22/20's Correction Range: Max. ±12°.
- SU20's Correction Range: Max. ±15°.

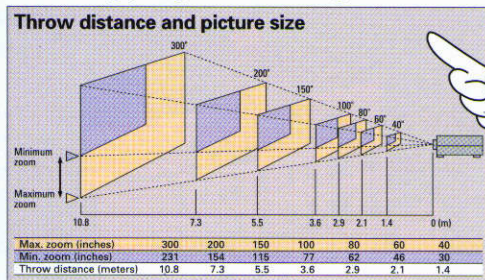


Digital Zoom

The Digital Zoom magnifies the image up to 16 times^{*12}, allowing you to focus on crucial information and hammer your message home. SANYO's original Digital Realized Interpolation Technology (DRIT) eliminates jagged edges on small letters and lines so even highly magnified images appear crisp and clear.

Screen Size

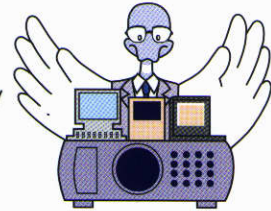
The size of the SANYO Ultra Portable LCD Projector's projection image can be adjusted to suit the size of the meeting room. Even at a short distance of 1.4 meters, the SANYO Ultra Portable LCD Projector projects a bold 30-inch image, and at its maximum 10.8 meter distance, it produces an amazingly large 300-inch image.



Higher-Performance, Professional Features

Multi-Scan System

SANYO's Multi-Scan System ensures plug-and-play compatibility with almost all computer output signals. There is no need for troublesome manual adjustment of frequency and other settings.

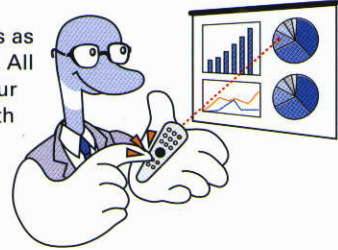


One-Touch Auto Imaging^{*13}

Incoming computer video signals are recognized and the best setting is automatically selected by the projector. No complicated setup is necessary and projection is always perfect.

Wireless Remote Control with Laser Pointer

A built-in laser pointer lets you highlight important points while giving presentations. The remote control also functions as a mouse, allowing you to perform computer operations as well as operate the projector. All you have to do is connect your computer to the projector with the provided cable.



■ Freeze Function

Projected images are paused and projected as a still image.

■ No Show Function

Temporarily stops showing projected images.

■ Multi-System Video Projection

Color system: PAL, SECAM, NTSC, NTSC 4.43, PAL-M and PAL-N.

■ Motor-Driven Zoom and Focus

■ 1W Monaural Speaker

■ Easy Operation with GUI^{*14} On-Screen Menu

6 languages: English, German, French, Italian, Spanish and Japanese.

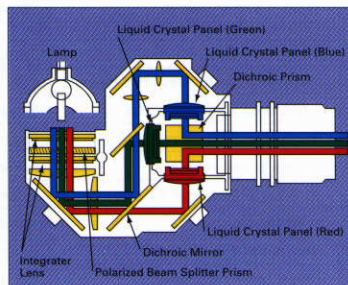


Ultra Portable Multimedia LCD Projector

High-Quality, Ultra-Bright Images with SANYO's LCD Technology

Faithful Reproduction of the Original Colors

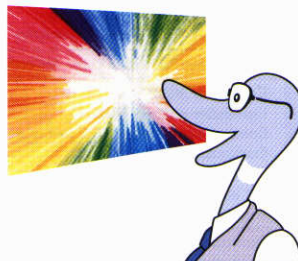
To reproduce highly detailed and bright images, it is essential that the projector has high-resolution LCD panels. SANYO Ultra Portable LCD Projector employs three 0.9" TFT Active Polysilicon LCD panels with 1,024 dots x 768 lines*³, each one controlling 786,432 pixels. Light from the lamp is divided into the 3 spectral colors, RGB, which are then projected separately onto each panel and combined to create high-fidelity, colorful images.



XGA*⁴ Real Projection

The world of graphics and rising sophistication of information delivery systems have propelled the demand for mobile projectors capable of handling intense, high-definition graphics with unequalled clarity and brightness. At 1,024 dots x 768 lines*³ and a 2,359,296 pixel*⁴ resolution, the XGA*⁴ real projection of SANYO Ultra Portable LCD Projector is fully capable of meeting the demands of today's and tomorrow's presentations.

The brilliant colors and graphics of a business chart or the convenience and flexibility of multiple connections for education systems – whatever your presentations needs, you'll appreciate the difference the SANYO Ultra Portable LCD Projector will make.



SXGA*⁵ Compressed Projection with DRIT

SANYO's Digital Realized Interpolation Technology (DRIT) ensures that the projected image quality is high for SXGA*⁵ input signals, which differ from the original resolution of the liquid crystal panels. SANYO's unique algorithms ensure clear and crisp projection of SVGA*⁵ spread sheets and the high details of CAD and CAM graphic renditions, as well as VGA*⁵ presentations.

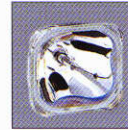
Computer Type	Dots x Lines
SXGA* ⁵	1,280 x 1,024, 1,152 x 864
MAC 21** ⁶	1,152 x 870
XGA* ⁵	1,024 x 768
MAC 19** ⁶	1,024 x 768
SVGA	800 x 600
MAC 16** ⁶	832 x 624
VGA	640 x 400, 640 x 480
	720 x 400
MAC 13"	640 x 480
MAC LC 13" RGB	640 x 480

High Brightness 1,200 ANSI Lumens*²

Most LCD projectors use metal halide lamps. SANYO Ultra Portable LCD Projector, however, uses a newly developed 150-watt UHP lamp that offers exceptional brightness while actually consuming less power. The SANYO Ultra Portable LCD Projector also has a revolutionary prism and Micro Lens system which "recycle" light energy that is wasted as heat in other projectors.

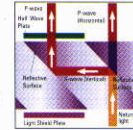
This Polarized Beam Splitter (PBS) optical system delivers 1,200 ANSI Lumens*² screen brightness, so even though these mobile projectors are lightweight and very portable, they are powerful enough for clear viewing without the need to dim room light.

• Ultra High Power (UHP) Lamp



The UHP lamp used in these projectors is close to a point-source light with a high degree of parallelism and offers higher efficiency.

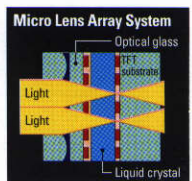
• Polarized Beam Splitter (PBS) Optical System



Non-polarized parallel light enters the PBS prism. The prism separates the light into P-wave and S-wave components, converting the P-wave light into S-wave light through a phase-shift plate.

Micro Lens*⁷

Each individual pixel on the 1,024 dots x 768 lines 0.9-inch polysilicon TFT-LCD panels has a Micro Lens integrated into it to increase overall light concentrating efficiency. This lets more light through to the LCD Panel from the UHP lamp, resulting in significantly brighter images.



High-Quality, Anti-Reflective Projection Lens

The high-quality, anti-reflective lens lets you focus over a wider range than traditional projectors, while maintaining an extremely high level of brightness, contrast and clarity.



Even Color and Brightness with AUCC

SANYO's Automatic Uniformity Correction Controller (AUCC) ensures a uniform projection, improving uneven color and the brightness of images, corner to corner.

Digital Enhancer Circuit

The Digital Enhancer Circuit smooths A/D converted input signals for bold image projection.

Gradation Correction Circuit for Liquid Crystal

The Gradation Correction Circuit adjusts the contrast range of images for superior projection on black or white backgrounds.

Digital Realized Video Scaling

SANYO's unique adjustment circuitry and Digital Realized Video Scaling ensure that video images are of the highest quality.



*1 Weight of XU20/SU20. XU22 weights 4.0 kg.

*2 Picture brightness of XU22/SU20. XU20 is 1,000 ANSI Lumens.

*3 Panel resolution of XU22/20. SU20 is 800 dots x 600 lines.

*4 Specifications of XU22/20. SU20 is a 1,440,000 pixel resolution and SVGA real projection.

*5 Specifications of XU22/20. SU20 is XGA compressed, VGA complemented projection.

*6 SXGA, MAC 21" for XU22/20. XGA, MAC 19", MAC 16" for SU20.

*7 *9 XU22 only.

*8 Not including adjustable feet.

*10 SmartMedia™ Memory Card adaptor and 8MB SmartMedia™ Memory Card included.

*11 MCI is used to edit the image data for projection with MCI function of SANYO LCD projectors. Image data can be imported and edited in various ways, and stored on memory cards. Image data can then be projected just by inserting the card into the PC card slot. No complicated connections with other peripheral equipment are required.

*12 Depending on volume of area being zoomed.

*13 This feature is not compatible with some less common computer models.

*14 Graphical User Interface (GUI).



Specifications

PLC-XU22 Series			PLC-XU20 Series			PLC-SU20 Series		
								
								
Projector type	Portable LCD color data projector		Projector type	Portable LCD color data projector		Projector type	Portable LCD color data projector	
Screen size	Adjustable from 30 inches to 300 inches		Screen size	Adjustable from 30 inches to 300 inches		Screen size	Adjustable from 30 inches to 300 inches	
Picture brightness	1,200 ANSI lumens		Picture brightness	1,000 ANSI lumens		Picture brightness	1,200 ANSI lumens	
Horizontal resolution	800 TV lines		Horizontal resolution	800 TV lines		Horizontal resolution	750 TV lines	
Throw distance	From 1.4 m to 10.8 m (100 inches at 3.6-4.7 m)		Throw distance	From 1.4 m to 10.8 m (100 inches at 3.6-4.7 m)		Throw distance	From 1.4 m to 10.8 m (100 inches at 3.6-4.7 m)	
Zoom ratio	1:1.3		Zoom ratio	1:1.3		Zoom ratio	1:1.3	
LCD panel system	2.33 cm (0.9") TFT active P-Si type x 3		LCD panel system	2.33 cm (0.9") TFT active P-Si type x 3		LCD panel system	2.33 cm (0.9") TFT active P-Si type x 3	
Panel resolution	1,024 dots x 768 lines (XGA)		Panel resolution	1,024 dots x 768 lines (XGA)		Panel resolution	800 dots x 600 lines (SVGA)	
Number of pixels	2,359,296 (786,432 x 3)		Number of pixels	2,359,296 (786,432 x 3)		Number of pixels	1,440,000 (480,000 x 3)	
Projection system	X-type prism system		Projection system	X-type prism system		Projection system	X-type prism system	
Projection lens	F1.7-2.0, f=33.2 mm-43.1 mm		Projection lens	F1.7-2.0, f=33.2 mm-43.1 mm		Projection lens	F1.7-2.0, f=33.2 mm-43.1 mm	
Projection lamp	UHP 150 W		Projection lamp	UHP 150 W		Projection lamp	UHP 150 W	
Amplifier	Monaural, 1 W rms		Amplifier	Monaural, 1 W rms		Amplifier	Monaural, 1 W rms	
Speaker	One piece --- 4 x 7 mm		Speaker	One piece --- 4 x 7 mm		Speaker	One piece --- 4 x 7 mm	
Key stone (U/D ratio)	20:1		Key stone (U/D ratio)	20:1		Key stone (U/D ratio)	20:1	
Laser Beam	Laser type	Class II 	Laser Beam	Laser type	Class II 	Laser Beam	Laser type	Class II 
	Wavelength	650 ± 20nm		Wavelength	650 ± 20nm		Wavelength	650 ± 20nm
	Output	1mW MAX		Output	1mW MAX		Output	1mW MAX
Dimensions (W x H x D)	239 x 90 x 323 mm (not including Adjustable Feet)		Dimensions (W x H x D)	239 x 90 x 323 mm (not including Adjustable Feet)		Dimensions (W x H x D)	239 x 90 x 323 mm (not including Adjustable Feet)	
Net weight	4.0 kg		Net weight	3.9 kg		Net weight	3.9 kg	
Rating power supply	100-120 V AC, 200-240 V AC, 50/60 Hz (Auto voltage selection)		Rating power supply	100-120 V AC, 200-240 V AC, 50/60 Hz (Auto voltage selection)		Rating power supply	100-120 V AC, 200-240 V AC, 50/60 Hz (Auto voltage selection)	
Power consumption	240 W		Power consumption	240W		Power consumption	240 W	
Scanning frequency	Automatic frequency control H sync.: 15 kHz-100 kHz, V sync.: 50 Hz -100 Hz, Dot clock: 140 MHz		Scanning frequency	Automatic frequency control H sync.: 15 kHz-100 kHz, V sync.: 50 Hz -100 Hz, Dot clock: 140 MHz		Scanning frequency	Automatic frequency control H sync.: 15 kHz-80 kHz, V sync.: 50 Hz-100 Hz, Dot clock: 135 MHz	
Color system	PAL/SECAM/NTSC/NTSC4.43/PAL-M/PAL-N		Color system	PAL/SECAM/NTSC/NTSC4.43/PAL-M/PAL-N		Color system	PAL/SECAM/NTSC/NTSC4.43/PAL-M/PAL-N	
Terminals	Computer input (HDB15) Computer output (HDB15) Computer audio input (Mini jack type) Computer control port S-video input (DIN 4-pin type) AV input (Phono) Audio output (Mini jack type)		Terminals	Computer input (HDB15) Computer output (HDB15) Computer audio input (Mini jack type) Computer control port S-video input (DIN 4-pin type) AV input (Phono) Audio output (Mini jack type)		Terminals	Computer input (HDB15) Computer output (HDB15) Computer audio input (Mini jack type) Computer control port S-video input (DIN 4-pin type) AV input (Phono) Audio output (Mini jack type)	
Standard accessories	Computer cable (VGA) Control cable (PS2) Lens cover Owner's manual AC power supply cord Wireless remote control unit (with laser pointer) Software (Media Card Imager, CD-ROM) PC card adapter (for SmartMedia™ Memory Card) SmartMedia™ Memory Card (8MB) Dust Cover		Standard accessories	Computer cable (VGA) Control cable (PS2) Lens cover Owner's manual AC power supply cord Wireless remote control unit (with laser pointer) Dust Cover		Standard accessories	Computer cable (VGA) Control cable (PS2) Lens cover Owner's manual AC power supply cord Wireless remote control unit (with laser pointer) Dust cover	

Optional Accessories

				
• MAC adapter: POA-MACAP	• Serial port cable: POA-MCSRL	• ADB port cable: POA-MCMAC	• Hard carrying case: KA-CC-XG30 (445 (W) x 450 (H) x 190 (D) mm/5.0 kg)	• Monitor cable: KA-MC-I27

*SANYO LCD panels are manufactured to the highest possible standards. At least 99.99% of the pixels are effective, however a tiny fraction of the pixels (0.01% or less) may be ineffective.

*Specifications are subject to change without notice. *Screen and display images are simulated. *Microsoft is a registered trademark of Microsoft Corporation.

*VGA, XGA and PS/2 are registered trademarks of International Business Machines Corporation. *Macintosh is a registered trademark of Apple Computer, Inc.

*All other brand or product names in this catalog are trademarks or registered trademarks of their respective holders.

Distributed by:

SANYO

SANYO Electric Co., Ltd.
SANYO Electric Trading Co., Ltd.

©2000 SANYO Printed in Japan 2000.3.MA
SF-1419MT