



# NC1500C

DLP Cinema® Projector

## Integrated-type DLP Cinema® projector\*1

NEC's NC1500C with state of the art technology is best suited for movie theaters with screens up to 15m (49ft) \*1

Integrated-type DLP Cinema® Projector for screens up to 15M (49ft) \*1\*2

Precise 2K (2048 x 1080) resolution

High contrast 2000:1 images

Easy to operate! User friendly!

- Industry **FIRST** memory functions for lens (zoom/position/focus) and lamp power \*3\*4
- Industry **FIRST** Lamp replacement from rear of the projector \*3
- Direct selection buttons for 8 stored titles
- Projector can be controlled from an optional touch screen
- Auto lamp brightness control
- Standard Film projector lamps can be used \*5
- Built-in webserver allows basic control of the projector from any web browser

Easy to carry

- Industry **FIRST** DLP Cinema® Projectors which can be moved or delivered without removing the lamp from the projectors \*3. Best suited for cinema application

Minimal maintenance

DMD shielding prevents dust, oil and smoke particles from contaminating the DMD surface

\*1 "Integrated-type" means projector head and lamp power supply unit are integrated in the projector.

\*2 Subject to installation conditions.

\*3 Among DLP Cinema® Projectors, according to a survey conducted by NEC in February, 2006.

\*4 Various aspect ratios and corresponding brightness levels can be stored and retrieved automatically.

\*5 Compatible third-party film projector lamps will be listed on NEC's website after verification from time to time.

## Specifications

|  |  |   |                         |
|--|--|---|-------------------------|
| Projection method                        | 3-chip DMD reflection method (DLP® method)   |   |                         |
| DMD specification Size, Type, Resolution | 1.2", 12" tilt angle, 2048 x 1080 pixels   |   |                         |
| Light Output                             | 11,000 ANSI Lumens*1   |   |                         |
| Supported screen sizes                   | 8 meters (26 feet)*2 - 15 meters (49 feet)*1 wide  |   |                         |
| Contrast ratio                           | 2000 : 1 or above (full on / off)  |   |                         |
| Primary lenses                           | 1.45 to 1.8:1 zoom   | (Note : select according to magnifications of installation environment) |                         |
|  | 1.8 to 2.4:1 zoom  |   |                         |
|  | 2.2 to 3.0:1 zoom  |   |                         |
|  | 3.0 to 4.3:1 zoom  |   |                         |
| Lamp bulbs                               | NEC High efficiency Xenon lamp bulbs   |   |                         |
|  | [NEC 3.0kW lamp bulb   |   |                         |
|  | *NEC recommends the use of NEC lamp bulbs in order to maximize luminance efficiency Standard film lamp bulbs*3             |   |                         |
| DLP Cinema® functions                    | CineLink™, CineCanvas™, CinePalette™, CineBlack™   |   |                         |
| Lens adjustment functions                | Motorized focus, zoom, horizontal/vertical shift*, light shutter(dowser)<br>*Range of motorized shift is dependent on lens |   |                         |
| Cooling method                           | Liquid cooling system inside, Air cooling system with dust preventing electro-static filter.                               |   |                         |
|  | Thermal dissipation:15013BTU (Input 3kW power to NEC 3.0kW lamp bulb)  |   |                         |
|  | Projector exhaust:424CFM (Cubic foot per minute)   |   |                         |
|  | Demand of exhaust:565CFM (Cubic foot per minute)   |   |                         |
| Fan noise                                | Less than 65 dB (T.B.D.)   |   |                         |
| Power supply voltage*4                   | 200 to 240V AC, 50/60Hz, single phase  |   |                         |
| Rated input current                      | 24A Max (T.B.D.)   |   |                         |
| Power consumption                        | 4400W (T.B.D.)   |   |                         |
| Environment                              | Operational temperatures   | 5°C to 35°C(41°F to 95°F), humidity : 10% to 85% (non-condensing)       |                         |
|  | Storage temperatures   | -10°C to 50°C(14°F to 122°F), humidity : 10% to 85% (non-condensing)    |                         |
| Regulations                              | <Safety>   | <EMC>   |                         |
|  | USA  | UL60950-1   | FCC Class A             |
|  | Canada   | CSA60950-1  | ICES-003 Class A        |
|  | Europe   | EN60950-1   | EN55022 Class A         |
|  |  |   | EN55024                 |
|  | Oceania  | IEC60950-1  | AS/NZS CISPR.22 Class A |
|  | Japan  | J60950  | VCCI Class A            |
| Asia                                     | IEC60950-1   | CISPR.22  |                         |
| External dimensions                      | Projector : 700(W) x 1100(D) x 674(H) (mm) (T.B.D.)  |   |                         |
|  | 27.6(W) x 43.3(D) x 26.5(H) (inch) (T.B.D.)<br>*Excluding lens, lens hood and exhaust stack.                               |   |                         |
| Weight                                   | Projector : Approx.146kg / 322lb (T.B.D.)  |   |                         |
|  | *Excluding lens.   |   |                         |

\*1 Subject to Installation conditions. This can be achieved using NEC 3kW lamp bulb.

\*2 Subject to installation conditions.

\*3 Compatible third-party film projector lamp bulbs will be listed on NEC's website after verification from time to time.

NEC optional collet shall be attached to the film lamp bulb.

\*4 Power cord : Supplied with NC1500C.

## Input / Output terminals

| Type             | Name                           | Description  | Quantity |
|------------------|--------------------------------|--|----------|
| Signal           | HDSDI port                     | BNC  | 2        |
| Input            | DVI port                       | DVI-digital  | 2        |
| External control | PC card slot                   | For compact flash memory card or wireless LAN card | 1        |
|                  | LAN port                       | RJ-45  | 2        |
|                  | USB port                       | Type A   | 1        |
|                  | Serial port(RS-232C)           | D-sub (9-pin)                                      | 1        |
|                  | General Purpose Input / Output | D-sub (37-pin)                                     | 1        |
|                  | Remote control connector       | Stereo mini  | 1        |

## Standard supplied accessories

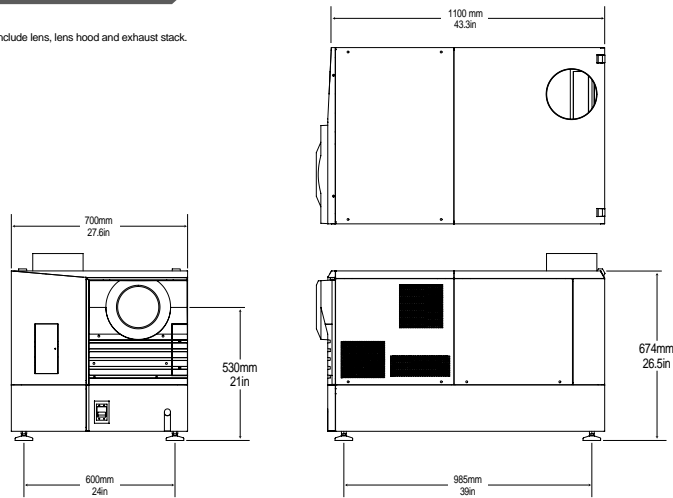
- Remote control unit
- Cable for remote control unit (16 m / 629 in.)
- Lens holder \*necessary to attach to primary lens
- User's manual

## Optional accessories

- Air filter for replacement
  - \*This air filter should be replaced whenever a new lamp bulb is replaced.
- Touch panel controller & Holder arm
- Lamp house module without a lamp bulb
- Anamorphic lens 1.25 & Automatic anamorphic lens turret
- Multi-Media Switcher for alternative content
  - Built-in type Multi-Media Switcher (available in April,2006)
    - \*Video Input Board and Analogue RGB Input Board are included in standard built-in type Multi-Media Switcher.
  - Standalone type Multi-Media Switcher (available in July,2006)
    - \*Video Input Board and Analogue RGB Input Board are included in standard standalone type Multi-Media Switcher.
  - Optional Input Boards for Multi-Media Switcher
    - Single HD/SDI Input Board
    - DVI Input Board
    - Analogue RGB Input Board
    - Video Input Board
- \*Pedestal for NC1500C shall not be supplied by NEC.
- Optional accessories are subject to change without notice.

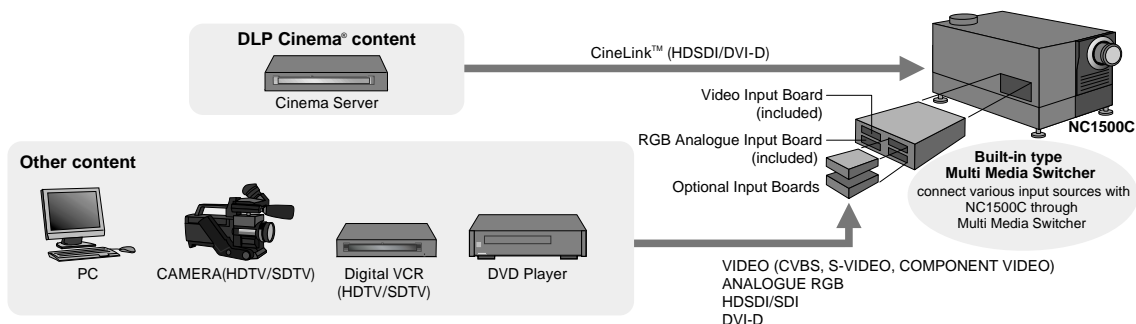
## Dimensions

\* Does not include lens, lens hood and exhaust stack.



## System configuration

### When using various image sources



KDLP-0603-261ZM

DLP, DLP Cinema and their respective logos are trademarks or registered trademarks of Texas Instruments.

CineLink, CineCanvas, CinePalette and CineBlack are trademarks of Texas Instruments.

All other trademarks are the property of their respective owners.

Specifications are subject to change without prior notice.



for more information

<http://www.nec-pj.com/products/dlpcinema/index.html>

Empowered by Innovation

**NEC**



\*This brochure uses recycled paper.

\*This brochure was printed with environment friendly vegetable soybean oil ink.