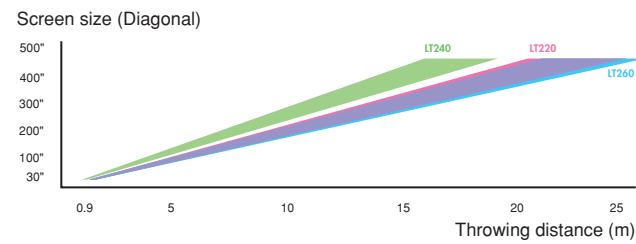


Specifications

	LT260	LT240	LT220
DMD	1chip DMD™ (0.7") reflection, 1024 x 768		1chip DMD™ (0.7") reflection, 800 x 600
Lens	Manual Zoom / Focus		
Lamp	220W NSH Lamp (176W in Eco mode)		
Image Size	30 - 500"		
Light Output	Normal Mode: 2100 ANSI lumens	1600 ANSI lumens	2000 ANSI lumens
Contrast Ratio	1300 : 1	1300 : 1	500 : 1
Synchronization Range	Horizontal: 15 - 100kHz (RGB : 24kHz or over) Vertical: 50 - 120Hz		
Speaker	2Wx1 (mono)		
Input Signal	RGB: VGA, SVGA, XGA, SXGA, UXGA (Advanced AccuBlend) Video: NTSC, NTSC4.43, PAL, PALN, PALM, PAL60, SECAM Component: 1080i, 720p, 480p, 480i/60Hz, 1080i/50Hz, Progressive PAL-Scan/50Hz		
Terminals	RGB Input	Mini D-sub 15pin x 2 (shared with YCbCr)	
	RGB Output	Mini D-sub 15pin	
	Video Input	RCA	
	S-Video Input	Mini DIN 4pin	
	Audio RGB Input	Stereo mini-jack	
	Audio Video Input	RCA L/R	
	Audio Output	Stereo mini-jack	
	PC Control	Mini DIN 8pin	
USB	USB x 2 : A and B type		
PC Card	PCMCIA type 2		
Fan Noise	32dB (Normal mode) / 29dB (Eco mode)		
Power Requirement	100-120V/200-240V AC, 50Hz/60Hz		
Power Consumption	280W		
Dimensions (W x H x D)	260 x 120 x 300 mm	260 x 120 x 319 mm	260 x 120 x 300 mm
Net Weight	2.9kg	3.2kg	2.9kg
Technologies	3D Reform, Eco Mode, Picture Management, Wireless and Wired LAN Function, Wireless Remote, Advanced AccuBlend, Remote Mouse Function Via USB		

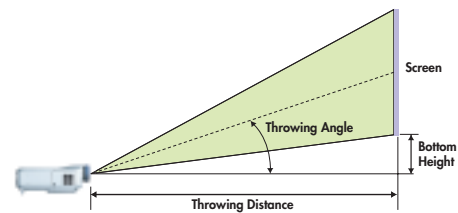
DMD™ Panel technology consists of fine picture cells with more than 99.99% of the cells being active. All specifications are subject to change without notice.

Throwing Distance and Image Size



Screen Size (Inch)	LT260			LT240			LT220		
	Throwing Distance Wide	Throwing Distance Tele	Bottom Height	Throwing Distance Wide	Throwing Distance Tele	Bottom Height	Throwing Distance Wide	Throwing Distance Tele	Bottom Height
30	1.1m	1.4m	9cm	0.9m	1.1m	9cm	1.2m	1.4m	10cm
40	1.5m	1.9m	12cm	1.2m	1.4m	12cm	1.6m	2.0m	13cm
60	2.4m	2.9m	18cm	1.8m	2.2m	18cm	2.4m	3.0m	20cm
80	3.2m	3.9m	24cm	2.4m	3.0m	24cm	3.3m	4.0m	27cm
100	4.0m	4.9m	30cm	3.1m	3.7m	30cm	4.1m	5.0m	34cm
150	6.0m	7.3m	46cm	4.7m	5.6m	45cm	6.2m	7.5m	51cm
200	8.1m	9.8m	61cm	6.2m	7.5m	61cm	8.3m	10.1m	67cm
300	12.1m	14.7m	92cm	9.4m	11.4m	91cm	12.5m	15.2m	101cm
400	16.2m	19.7m	123cm	12.6m	15.2m	122cm	16.7m	20.2m	135cm
500	20.3m	24.6m	153cm	15.8m	19.0m	152cm	20.9m	25.3m	169cm
Throwing Angle	14.9°	12.3°		18.8°	15.8°		14.9°	12.3°	

The actual throwing distance may vary within plus or minus 5%. The indicated distance is a design value only.



Remote Control



Options

<<Replacement Lamp>>



LT60LP

<<Ceiling Mount Kit>>



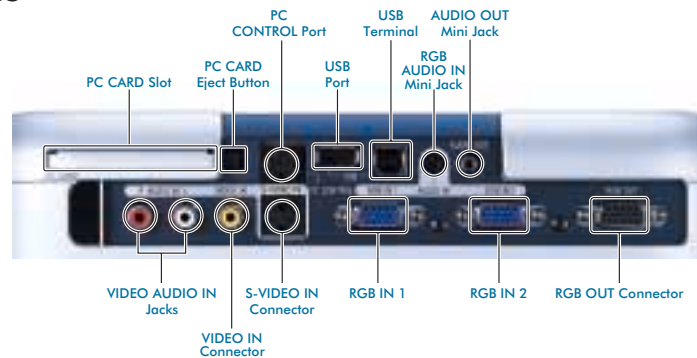
LT60CM

<<Component Adapter>>



ADP-CV1

Terminal Panel Features



EASY TO USE

While priority one for all NEC Projectors is ease of use, years of designing experience also enables NEC to offer projectors that are exceptionally artistic. Technologically advanced NEC Projectors - ease of use, beautifully rendered.



This catalog is printed using environment-friendly waterless printing, plant-based soy ink.

for more information
www.nec-pj.com

KDLP-0209-021RR

Empowered by Innovation

NEC

Easy to Use

Empowered by Innovation

NEC

Micro Portable Projector

MultiSync LT260/240/220



Highly functional and user friendly

- High Brightness: 2100 ANSI lumens (LT260)
- Extremely High Contrast: 1300:1 (LT260/LT240)
- 3D Reform Geometric Correction for Free Installation Layout
- Wired and Wireless LAN Capability
- Quietness: Normal: 32dB, Eco: 29dB
- PC-free Presentation
- Eco Mode
- Light Weight: 2.9kg (LT260/LT220)



NEC LT260



for more information
www.nec-pj.com

The DLP™ logo, DLP™ medallion and DMD™ are trademarks of Texas Instruments. XGA is a registered trademark of International Business Machines Corporation. Windows and Direct X are registered trademarks of Microsoft Corporation.

●● At the office, school, or an event venue

For presentations, the NEC LT260 is all you'll ever need. With an impressive combination of features, the LT260 provides the ideal environment, no matter where you are.

Brightness and contrast levels are adjustable, and the standby mode conserves energy. The new 3D Reform and wireless LAN allow increased freedom for setup and image projection. Boasting all the functions necessary for mobile operation, the LT260 is represents our dedication to increased functionality and ease-of-use.



LT260

☐ **In the classroom...**



With the LT260, clearing desks to make room for the projector is now a thing of the past. The LT260 is extremely light and easily carried between classrooms.

☐ **In the meeting room...**



The projector can be placed at an angle in relation to the screen, and the wireless LAN function means that viewers are able to see the screen unobstructed. Your meeting room remains clean and uncluttered.



LT240

Features a near focus lens and high luminance. The near focus lens allows large screen images to be projected over short distances, making possible the projection of clear, vivid images even in small meeting rooms and places in which you would like to keep the projector as close as possible, such as classrooms and seminar venues.



LT220

Highly functional and easy to use, with enviable display brightness. This unit is outstandingly functional, featuring Real S-VGA (800x600). NEC's Advanced AccuBlend compressing technology makes the LT220 compatible even with U-XGA. With a brightness of 2000 ANSI Lumens and contrast ratio of 500:1, this unit is the epitome of user-friendliness.

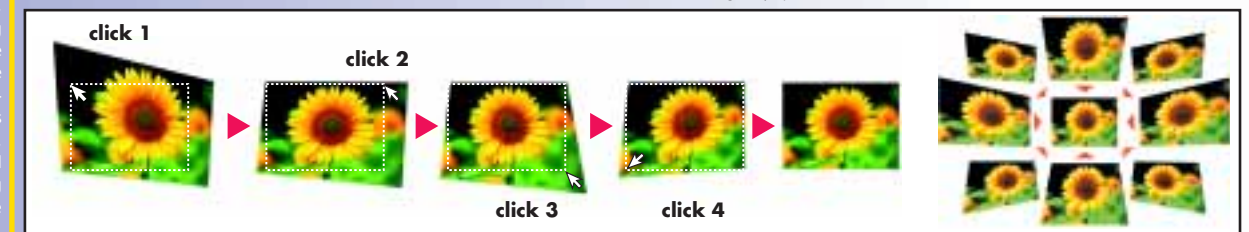
3D Reform



The new NEC chip is the result of exhaustive research by NEC Viewtechnology, which developed ASIC scaling for converting picture elements, making NEC unique among projector manufacturers. Independent algorithms manage the vertical, horizontal, or angled corrections, thus increasing the range in which the projector can be placed.

Angled projection ability lets you place the projector anywhere you like.

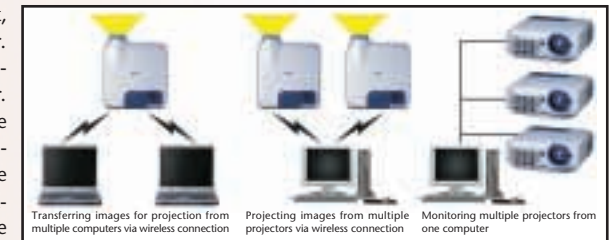
A newly developed NEC chip provides the 3D Reform function, a keystone correction feature that corrects trapezoidal distortions - something which was beyond the capabilities of traditional "up-down-left-right" correction functions. The result is vivid, razor-sharp image projection. If the projection is distorted, simply set the four corners of the screen to activate cornerstone correct function and square the picture. This allows greater freedom in setting up the projector, because it can now be set up at an angle in relation to the screen. The projector no longer needs to be placed right in front of the screen where it can block the audience's view of the screen. ● 40° vertical and 30° horizontal (25° for the LT240) from the angle of projection.



Wireless LAN

The LT260 is compatible with both wireless and wired local area networks, making for smoothly run presentations.

NEC has developed technology that makes possible the fast, efficient, high-quality transfer of computer screen images to the projector. Using optional wireless LAN* card allows participants with many attendants to transfer data from each of their computers to the projector. No more bothersome cables, no more meeting interruptions, no more worries. Also, in larger venues, it is possible to project images simultaneously from multiple projectors. Furthermore, using wireless and cable LAN cards, users can monitor and control the projector over the network using a computer to switch the unit on/off, check the usage time of the lamp, and receive automatic e-mail notification when the lamp reaches the end of its operating life.



*Optional wireless LAN cards are not sold in some countries and regions. For details, please consult your distributor or dealer, or visit our Internet website.

●Wireless LAN requires a commercially available wireless LAN card; cable LAN requires a commercially available cable LAN card. Please refer to our Internet web site for details. ●Operating system: Windows® 98, Me, 2000, XP ●Reloading of computer screen images projected through LAN connections may range from several times per second to once in several seconds. Reloading must be done manually when projecting from multiple computers ●Images from some software products, such as those using Direct X, cannot be transferred or projected.

2100 ANSI Lumens

bright, compelling images

At 2100 ANSI Lumens of brightness, the LT260 makes a dazzling impression: no matter how bright the room, you are always treated to crisp, vivid images.

Contrast 1300:1

sharp, precise contrast

Improvements in optical technology and the use of highly advanced DMD™ chips have allowed us to achieve an incredible 1300:1 contrast ratio(LT260/240). Black and white contrast has become much clearer, leading to a massive increase in representational capability.

29dB

quiet operation, optimum performance

By combining the feedback fan control circuit, which sets cooling conditions to the manner and environment in which the projector is to be used, with a newly developed motor, the LT260 emits a miniscule 29dB of noise when in Lamp Eco Mode. No more annoying noise from the projector during meetings. ● 32dB at normal settings.

Eco

Advanced energy conserving (standby)

Our newly developed high efficiency power supply unit and engine allows the projector to be operated at a very low 280W. In Standby Mode, the LT260 uses an incredible 0.6W.

DLP™

Keep your images clean with the DLP™ dust control structure

The LT260 features a dust control structure and DLP™ sealed engine to maintain the beauty of the images.