

# RLM-W8

8,000 lumens three-chip DLP™, WUXGA projector



Barco's RLM-W8 brings the saturated colors of three-chip DLP projection to events and fixed installations, at the price of single-chip DLP technology. With an **enhanced contrast**, quick and creative stacking options as well as **built-in warping** capabilities for curved surfaces, Barco's RLM-W8 is a versatile choice for mid- to large-sized venues. In addition, it features **blending** technology to create seamless composite images across a canvas of any size. The RLM-W8 continues the RLM line's tradition of **silence** as well as **low energy** consumption.

## Key benefits

- WUXGA (1920x1200) resolution
- 8,000 lumens
- 10x more silent than its rivals
- 33% lower power consumption
- 2,200:1 contrast ratio
- Geometry correction for curved surfaces
- Edge blending to create continuous, seamless images

**BARCO**

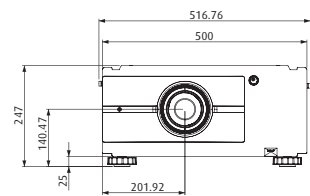
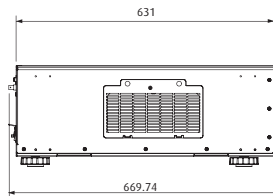
Visibly yours

# RLM-W8 technical specifications

<b>Light output (typical)</b>	7,300 ANSI lumens ( $\pm 10\%$ ) 8,000 center lumens ( $\pm 10\%$ )	<b>Service programs</b>		
<b>Contrast (standard)</b>	2,000:1 full field			
<b>Resolution (native)</b>	1,920 x 1,200 pixels	<b>Basic Warranty*</b>	<b>Extended Warranty</b>	<b>Priority Service</b>
<b>Display technology</b>	3 x DLP 0.67" DMD	<b>1 year warranty</b>	<b>2 year warranty</b>	<b>2 year warranty</b>
<b>Lamp power</b>	2 x 330W UHP	Loaner projector within 10 business days	Loaner projector within 10 business days	Loaner projector shipped next business day
<b>Brightness uniformity (standard)</b>	95%			
<b>Scenergix</b>	horizontal and vertical edge blending			
<b>Inputs</b>	2x HDMI (HDCP 1.3); HDSDI 3G 1x YUV1 (on RCA/cinch) 1x Composite video (on RCA/cinch) 1x S-Video (on 4-pin mini-DIN) 1x RGBHV/YUV2 (on VGA/BNC)	(*) included standard		
<b>Picture-in-picture</b>	1 main window, 1 PiP window			
<b>Pixel clock</b>	165 MHz			
<b>Communication ports</b>	10/100 Mb/s Ethernet (on RJ45) RS-232 (on D9) IR external 2x 12V trigger			
<b>Available zoom lenses</b>	RLD (1.45 ~ 1.74:1) R9832742 RLD (1.74 ~ 2.17:1) R9832743 RLD (2.17 ~ 2.90:1) R9832744 RLD (2.90 ~ 4.34:1) R9832745 RLD (4.34 ~ 6.76:1) R9832746			
<b>Available fixed focal lenses</b>	RLD (0.77:1) R9832740 RLD (1.16:1) R9832741			
<b>Lens shift (max)</b>	Hor: $\pm 30\%$ - Vert: $\pm 100\%$			
<b>AC power</b>	100 - 240 VAC ( $\pm 10\%$ )/50-60 Hz			
<b>Power consumption</b>	800 W (at 240V)			
<b>Operating temperature</b>	0 ~ 40°C			
<b>Noise level</b>	<b>normal operation</b> 39 dB <b>Eco mode</b> 32 dB			
<b>Weight</b>	26 kg (57.3 lbs)			
<b>Dimensions (H x W x L)</b>	247 x 516.7 x 669.74 mm (9.72" x 20.34" x 26.37")			
<b>Order info:</b>	<b>Rental Pack</b> R9006312B2 (2x RLM-W8 w/lens + stacking frame + 2 spare lamps) <b>CAV Pack</b> R9006313B1 (RLM-W8 w/lens + ceiling mount kit + 2 spare lamps) <b>RLM-W8 (body only)</b> R9006310 <b>RLM-W8 (incl. lens)</b> R9006311B1 <b>RLM-W8 Extended Warranty</b> R9899702 <b>RLM-W8 Priority Service</b> R9899703			



M00386-R00-0910-DS



DLP™ technology by Texas Instruments offers crystal clear images with superior quality. DLP is a trademark of Texas Instruments.

The information and data given are typical for the equipment described. However any individual item is subject to change without any notice. The latest version of this brochure can be found on [www.barco.com](http://www.barco.com).

Barco nv  
President Kennedypark 35, 8500 Kortrijk - Belgium  
Tel. +32 56 36 89 70 - Fax +32 56 36 83 86  
email: [sales.events@barco.com](mailto:sales.events@barco.com)

**BARCO**

Visibly yours