

# PH Series

## PH1000U digital projector

Powerful installation projector that delivers quality, larger-than-life images under virtually any operating condition. Capable of taking on even the most demanding integration projects, it is ideal for large venues or high ambient lighting conditions.



### FLEXIBILITY ENABLES PERFORMANCE

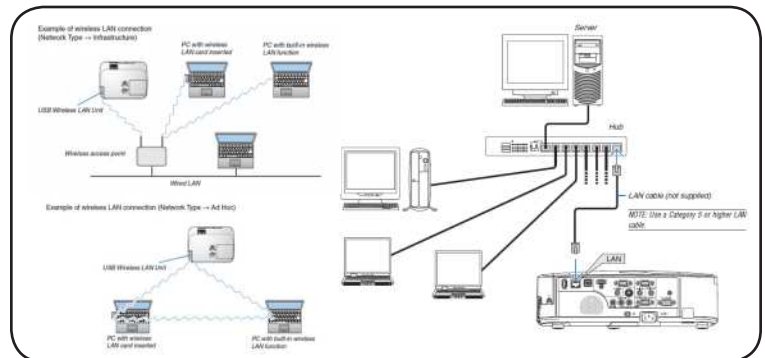
- Integrated Device Technology HQV™ is a high-performance video processing/scaling system designed for computer signals as well as standard or high-definition video. The technology produces superior video processing using pixel-based, motion-adaptive de-interlacing to remove undesirable motion artifacts typical of interlaced signals. This processing creates life-like images in applications such as video conferencing.
- Powered by a unique 3-chip 0.96" DLP system, this 11,000-lumen projector features a sleek, compact design with WUXGA resolution and dual UHP lamps
- Geometric correction tool allows you to project on spheres, cylinders and more
- VIDI technology, a Phillips innovation designed to work in conjunction with the color wheel, uses a brilliant pulse to increase the brightness of the image and a dark pulse to increase the contrast ratio

### INTEGRATED NETWORKING AND ASSET MANAGEMENT

- Integrated RJ45 connection for quick connection to the LAN (10/100 base-T capability)
- Optional high-speed wireless LAN IEEE 802.11b/g/n
- Desktop control allows you to securely transmit information wirelessly to the projector from a docking station or PC in another room
- Image Express Utility (IEU 2.0; compatible with Windows or Mac operating systems) dedicated projector software provides wired and wireless data transmission via peer-to-peer or over the network

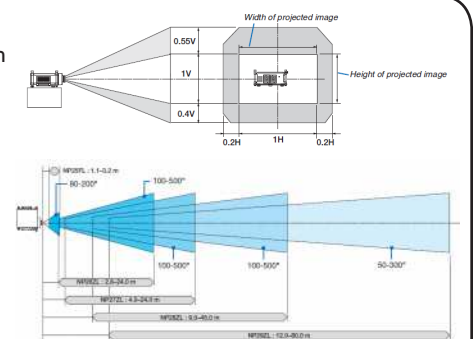
- Broadcast mode allows you to send information from one computer to several projectors

- Windows Network Projector function within Windows Vista connects directly to networked projectors without the need for additional proprietary software
- Windows Remote Desktop function allows you to control a networked computer by connecting a USB mouse and keyboard directly to the projector's USB input
- Windows Network Drive Function displays multimedia files (.jpeg, .bmp, .png, .mpeg2 or .wmv9) in the Windows shared folder on a local network using the Viewer function – all without bringing your PC into the conference room
- Windows Media Connection Function displays multimedia files (.mpeg2, .jpeg or .wmv9) stored on the Windows Media Connect server or a local network using the Viewer function – all without bringing your PC into the conference room
- Crestron Roomview Connected™



### Lens Shift

Enjoy greater installation flexibility with +55%/-40% vertical lens shift and +/- 20% horizontal lens shift. Ships lensless with a complete line of optional bayonet style lenses (6) for quick and easy exchange. Lens throw distances range from 2.6 to 179.8 feet.



### SECURITY FEATURES PROVIDE PEACE OF MIND

- Cabinet control lock setting enables user to deactivate buttons on cabinet to prevent unwanted changes to projector settings
- Logo lock restricts changes to logo saved in projector memory
- Password protection restricts unauthorized use of projector
- Email notification informs the system administrator when the lamp approaches the end of its useful life

## DESIGNED WITH THE ENVIRONMENT IN MIND

- **Extended lamp life with ECO Mode™ technology** increases lamp life up to 2500 hours, while lowering power consumption
- **Power management** enables projector to automatically turn off when an incoming signal is not detected from any of the inputs
- **Auto Power On** via the RGB (15-pin) input connector when a signal is detected from a computer
- **Carbon savings meter** calculates the positive effects of operating the projector in ECO Mode, which is encouraged by an optional message at startup. A green ECO Mode button on the remote control makes the switch easy.
- **Quick start (3 to 4 seconds)** lets you begin presenting in seconds while quick shutdown (immediate power off with no cooling required after shutdown) ensures efficient energy usage
- **Sleep timer** can be set to automatically turn off the projector at set countdown times
- **Low power consumption** (0.2W in stand-by mode) minimizes energy costs
- **Direct power off** provides instantaneous shutdown of the projector



### 2500-hour filter life

NEC is committed to designing its products to provide long lifecycles. This commitment even extends to components within its products, including the improved filter. This virtually maintenance-free filter reduces the frequency at which cleaning is required, thereby decreasing your total cost of ownership. Filter replacement is only required at the time the lamp is replaced.



## BUILT-IN SOFTWARE

### Edge blending

This function seamlessly blends multiple projected images to display a single high-resolution image.



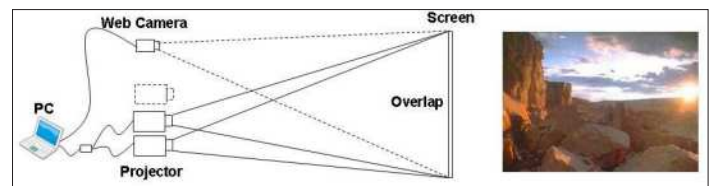
### PIP/Side-by-Side

This function allows two sources to be displayed on the screen at one time in either a picture-in-picture or side-by-side configuration.



### Built-in stacking correction

The industry's first built-in stacking correction capabilities (up to four projectors) allows the projectors to boost an image's brightness up to 44,000 lumens, which is ideal for larger-sized screens and environments with heavy ambient light. This feature also prevents the complete loss of an image, which can happen when using only one projector.



### DICOM SIM

DICOM Simulation enables users in medical environments to display accurate diagnostic images.



### Built-in wall color correction presets

These provide for adaptive color tone correction to display properly on non-white surfaces.



On a green wall...

BEFORE auto wall correction



AFTER auto wall correction



## GET CONNECTED WITH A WIDE SELECTION OF INPUTS

- **Dual computer inputs** ensure quick switching between presentations
- **Four audio inputs (two mini stereo [Comp1 & Comp2], R/L [RCA - shared by video sources] and HDMI®)** make it easy to add sound to enhance your presentations

### Remote control

Easy control from remote allows you to adjust lamp mode, aspect ratio, volume and image all with the touch of a button.



### HDMI input

Among the PH Series' wide selection of inputs is an HDMI w/HDCP for connecting to high-definition sources such as Blu-ray players, cable boxes, satellite receivers and personal computers.



### DisplayPort

This input provides PH Series models with expanded connectivity with advanced technology.



### Open Pluggable Specification (OPS)

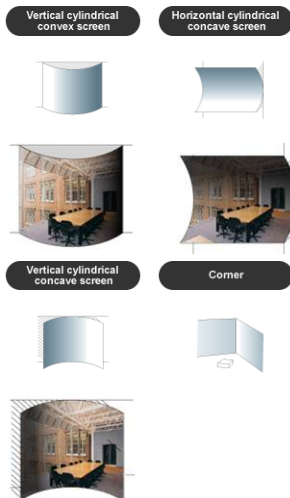
The first industry-wide standardization in option slots simplifies installation, use and maintenance, while offering superior input flexibility.



## ADVANCED SOFTWARE FEATURES

### Geometric Correction

Projecting an image isn't confined to a standard flat screen or wall with the NEC PH Series. Geometric correction allows these models to project an image on spheres, cylinders, corner angles and many more non-standard surfaces.



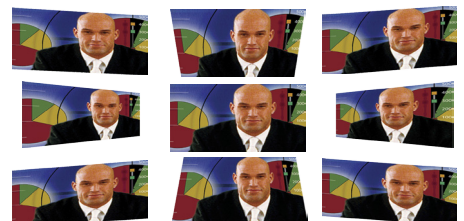
### Virtual Remote™ (DDC/CI)

Used over the VGA cable, you can control the projector directly from a computer without the need for additional control cables.



### Cornerstone

Enhanced keystone correction allows for horizontal, vertical and diagonal image correction for aligned images even when the projector is set up at an angle to the screen.





## UNIQUE FEATURES

**3D Reform™** allows you to square the image by adjusting horizontally, vertically or diagonally when the projector cannot be placed parallel or perpendicular to the screen

**Advanced AccuBlend™** ensures detailed images when non-native resolution sources are connected to the projector

**AutoSense™** automatically syncs with any computer signal and features one-touch image optimization

**64-step image magnification** with location control

**Discreet source keys** for source selection

**Remote diagnostics** enable the user to monitor and make adjustments to the projector remotely

**Built-in HTTP page** for control and monitoring over a LAN network. Email notification of error messages or lamp end-of-life can be sent to remote locations.

## WARRANTY

Registered owners receive a 3-year parts and labor warranty including the first year of InstaCare. The lamp is covered for one year or 500 hours, whichever comes first. InstaCare provides the original owner one year of either limited 3 business day repair/return or next business day exchange.

## IN THE BOX

Remote control, remote control cable, batteries, power cord, RGB signal cable, lens cap, user's manual on CD-ROM, quick start guide, product registration card, wired and wireless network setup guide, lens anti-theft screw

## Ordering Model Numbers

NP-PH1000U

## Specifications for PH1000U

<b>OPTICAL</b>	<p>Display Technology Resolution Native Maximum Light Output (lumens) Contrast Ratio (up to) Lamp Type Lamp Life (up to) Screen Size (diagonal) Throw Ratio NP25FL NP26ZL NP27ZL NP28ZL NP29ZL Lens* Zoom Focus F-number NP25FL NP26ZL NP27ZL NP28ZL NP29ZL Shift Shutter Keystone Correction</p>	<p>0.96 x (3) DMD WUXGA 1920 x 1200 WUXGA 1920 x 1200 11,000 normal / Eco = approx. 85% of normal mode 2000:1 (2) 400W AC 2000 hours normal / 2500 hours eco 80 to 500 in. / 2032 to 12,700mm 0.67:1 1.39 - 1.87:1 1.87 - 2.56:1 2.56 - 4.16:1 4.16 - 6.96:1 Power Power F = 1.85, f = 11.2mm F = 1.85 to 2.5, f = 18.7 to 26.5mm F = 1.64 to 1.86, f = 25.7 to 33.7mm F = 1.86 to 2.48, f = 32.9 to 54.2mm F = 1.85 to 2.41, f = 52.8 to 79.1mm Motorized +55%/40% Vertical and +/-20% Horizontal Yes (motorized) V +/-35° H +/-30°</p>
<b>SIGNAL COMPATIBILITY/CONNECTIVITY</b>	<p>Scan Rate Supported Video Standards SD/HD Video Signal Compatibility PC Signal Compatibility Macintosh Compatibility Input/Output Terminals RGB1 (analog) RGB2 (analog) RGB3 (analog) RGB4 (digital) RGB5 (digital) Video 1 Video 2 Video 3 Option Slot Monitor Out External Control Sync Compatibility Networking</p>	<p>Horizontal 15 - 108 kHz / Vertical 48 - 120 Hz NTSC, NTSC4.43, PAL, PAL-60, PAL-M, PAL-N, SECAM 1080p, 1080i, 720p, 575p, 575i, 480p, 480i VGA, SVGA, XGA, SXGA, SXGA+, UXGA, WXGA Yes 15 pin 15 pin 5-BNC HDMI w/HDCP DisplayPort RCA S-Video Component HD/SD-SDI 1-15 pin 9-pin D-sub, RS-232, IR Separate Sync / Composite Sync / Sync on G RJ-45 and Wireless LAN (optional)</p>
<b>ELECTRICAL</b>	<p>Power Requirements Input Current Normal Mode ECO Mode Power Consumption Normal Mode ECO Mode Standby Power / Power Saving</p>	<p>100 - 240V AC, 50/60Hz 10.8A dual lamp / 3.8A single lamp 5.8A dual lamp / 3.1A single lamp 1006W dual lamp / 530W single lamp 810W dual lamp / 439W single lamp 33W / 23W / 0.2W</p>
<b>MECHANICAL</b>	<p>Installation Orientation Dimensions (WxDxH) Net Weight Fan Noise</p>	<p>Floor/Front, Floor/Rear, Ceiling/Front, Ceiling/Rear 22.8 x 22 x 9.3 in. / 578 x 558 x 235mm (without stacking columns) 25.7 x 27.6 x 13.1 in. / 653 x 700 x 333mm 87.1 lbs. / 39.5 kg 45 dB normal / 39 dB eco @ 1m</p>
<b>ENVIRONMENTAL</b>	<p>Operational Temp Regulations Humidity Storage</p>	<p>41° - 104°F / 5° - 40°C Sea level / 41° - 73°F / 5° - 23°C @ 10,000 ft. USA UL 60950-1, FCC A, Canada C-UL 60950-1 20-80% non-condensing 14° - 122°F / -10° - 50°C</p>
<b>ACCESSORIES</b>	<p>NP25FL NP26ZL NP27ZL NP28ZL NP29ZL SB-01HC PHCase-01 RMT-PJ33 PWRCRD-PJPX RGBCBL-PJPX NP03FT NP22LP NECEW2-I NECEW1-I ADVEXON1-I ADVEXON2-I</p>	<p>0.67:1 fixed short throw lens 1.39 - 1.87:1 zoom lens 1.87 - 2.56:1 zoom lens 2.56 - 4.16:1 zoom lens 4.16 - 6.96:1 zoom lens HD/SD-SDI input card ATA-certified case for shipping and secure storage Replacement remote control Replacement power cable Replacement RGB signal cable Replacement filter Replacement lamp Extends term of parts and labor warranty to 5 years Extends term of parts and labor warranty to 4 years Extends term of InstaCare service program to 2 years Extends term of InstaCare service program to 3 years</p>
* Lens does not ship with the projector. Additional accessories are available, including screens, carts, mount accessories and replacement cables. Visit <a href="http://www.necdisplay.com">www.necdisplay.com</a> for details.		



**HQV**



**ProSelecta**

View :: Compare :: Select - [www.ProSelecta.com](http://www.ProSelecta.com)