

# First things first

## Usage Notes

### Do:

- Turn off the product before cleaning.
- Use a soft cloth moistened with mild detergent to clean the display housing.
- Disconnect the power plug from AC outlet if the product is not being used for a long period of time.

### Don't:

- Use abrasive cleaners, waxes or solvents to clean the unit.
- Use under the following conditions:
  - In extremely hot, cold or humid environments.
  - In areas susceptible to excessive dust and dirt.
  - Near any appliance that generates a strong magnetic field.
  - Place In direct sunlight.

## Precautions

Follow all warnings, precautions and maintenance as recommended in this user's guide to maximize the life of your unit.

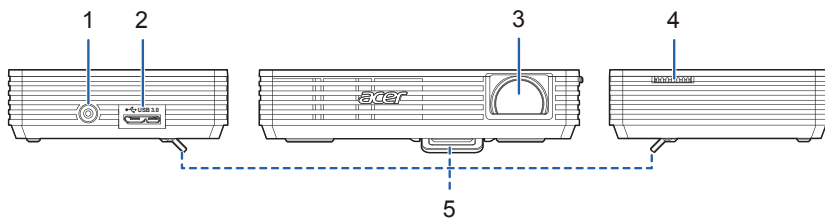


### Warning!

- Do not look into the projector's lens when the light is on. The bright may hurt your eyes.
- To reduce the risk of fire or electric shock, do not expose this product to rain or moisture.
- Please do not open or disassemble the product as this may cause electric shock.
- Turn on the projector first and then the signal sources.

# Introduction

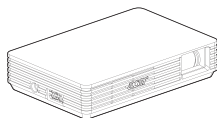

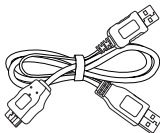



## Product Overview



#	Description	#	Description
1	DC IN connector	4	Focus Dial
2	USB 3.0 Micro B type	5	Foot Stand
3	Lens		

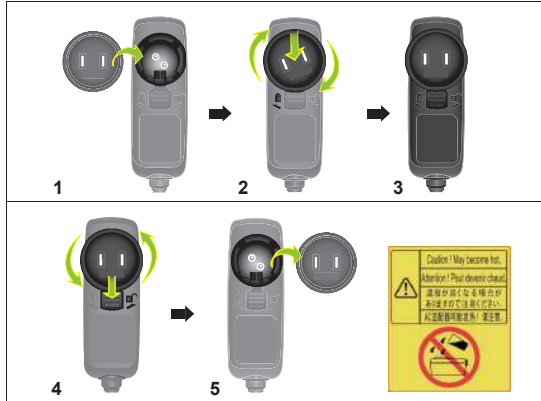
## Package Overview

This projector comes with all the items shown below. Check to make sure your unit is complete. Contact your dealer immediately if any thing is missing.

		
Projector	Power adaptor with AC Plug	USB Y-cable
		
Pouch	User's Guide	Quick start guide

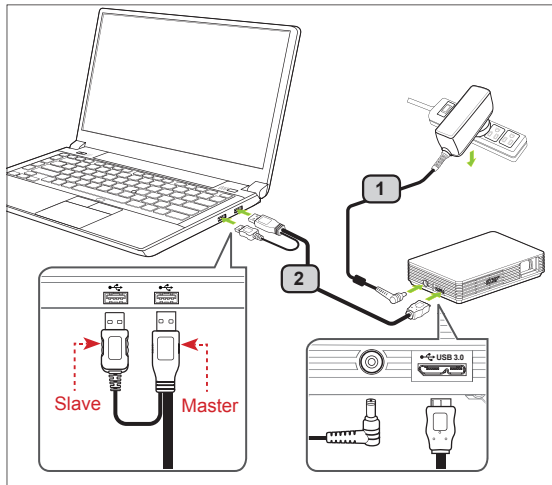
## Getting Started

### How to use the AC adater plug



#	Description
1	Insert the plug. (illustration #1~3)
2	Change the plug. (illustration #4~6)

### Connecting the Projector



#	Description
1	Power adaptor with AC Plug
2	USB Y-cable

**Note:** To ensure the projector works well with your computer, please make sure the timing of the display mode is compatible with the projector.

Connect the USB connector to your computer and plug the USB connector to the projector. If you want a brighter display, use power adaptor or plug two USB connector to your computer.

- Note:** It is recommended to use power adaptor to get best brightness.
- Note:** If no power adaptor, it is recommended to plug in USB 3.0 if have or plug the two USB connectors on the same side of the computer to get the best performance. Please make sure that your computer is capable of supplying sufficient current through the USB ports.
- Note:** If only one USB ports available, use the Master USB connector.
- Note:** Recommend to plug 2 USB port if not acer notebook.
- Note:** Only support computer to link one C120.

### Minimum System Requirements:

- Core 2 Duo 2.0Ghz
- 2GB DDR SDRAM



.....

**Note:** Video playback is not recommended when using netbook or CULV notebook (CPU power limitation).

**Note:** Dual-core notebook or above is recommended if you want a smooth video playback.

**Note:** USB bandwidth is depended on USB 3.0 or 2.0 specification.

### Supported OS:

- Windows XP Home or Professional 32-bit Service Pack 3 or later
- Windows Vista 32- and 64-bit Service Pack 2 or later
- Windows 7 32- and 64-bit.



.....

**Note:** Mac OS and Android OS are not supported.

## Turn Off the Projector

When you have finished using the projector, unplugging the USB Y-cable from your computer.

## Display over USB

USB projection is an easy-to-use function to project a NB/PC's screen by single USB cable without needing any drivers. C120 provides both USB3.0 projection and USB2.0 projection.



When you first plug in your projector, NB/PC will detect C120 automatically and follow the onscreen instruction to install the application – Acer DisplayPal.

Run dlusb\_launcherC120.exe and then your NB/ PC screen will be projected out via C120. Enjoy your USB projection.

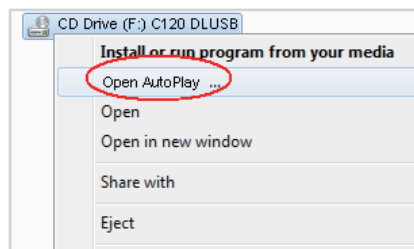


.....

**Note:** Make sure Auto Run function is enabled. If not, please enable manually.

Tap right button of mouse to open folder and run dlusb\_launcherC120.exe.

Acer DisplayPal will be displayed as tray icon, you will see “C120 detected” once C120 is ready to use.



.....

**Note:** Please use C120 after NB/PC has finish OS start/restart procedure.

**Note:** Ensure that you have administrator-level permission on your NB/PC.

**Note:** You may see pop-up message window of anti-virus application to ask you if execute C120.

**Note:** It is recommended that you don't use other USB devices (External Optical drive, External HDD device, charging your mobile phone/devices) when using the USB projector.

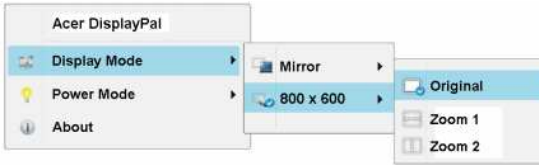
**Note:** Don't support USB projection if DirectX PC games.

# Acer DisplayPal

Tap tray icon of Acer DisplayPal if you want to adjust setting.

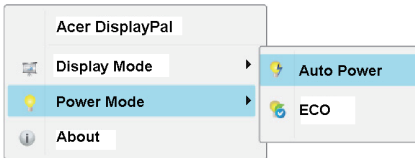
## Display Mode

You can choose Mirror mode or 800x600 mode to display. 800x600 is default setting.



## Power Mode

You can choose Auto Power mode and ECO mode. Auto Power is default.

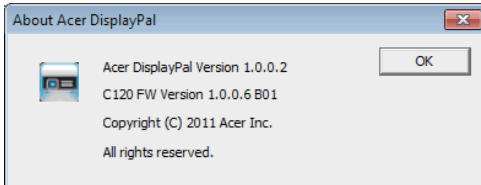


Refer to below table to choose the suitable one.

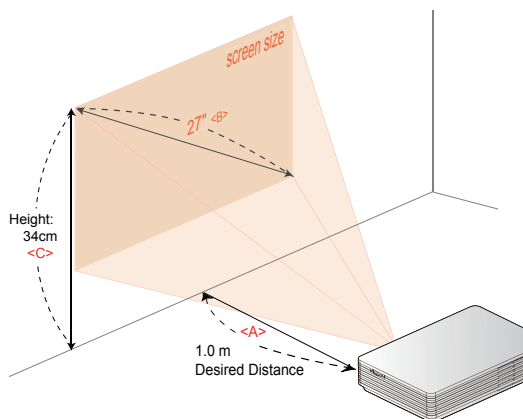
Power Mode		Used USB port	Total Power (reference)	Brightness ranking by ★ Brightness (unit: lm)	Remark
Auto	Adapter	NA	20W	★★★★★★	Recommended by power adapter
	USB 3.0 x 1 (Master)	1 port, USB 3.0 x 1	9W	★★★★★★	No adapter, NB with USB 3.0 port
	USB 2.0 x 2	2 ports, USB 2.0 x 2	7W	★★★★★	No adapter, NB with USB 2.0 port only
	USB 2.0 x 1 (Master)	1 port, USB 2.0 x 1	4W~7W	★★★★	Depended on USB power
Eco	Adapter	NA	12W	★★★★★★	Recommended with silence
	USB 3.0 x 1 (Master)	1 port, USB 3.0 x 1	4.5W	★★	Depended on USB power
	USB 2.0 x 2	2 ports, USB 2.0 x 2	4W	★★	Depended on USB power
	USB 2.0 x 1 (Master)	1 port, USB 2.0 x 1	4W	★★	Depended on USB power

## About

About : version information of Acer DisplayPal.



## How to Optimize Image Size and Distance



Choose the appropriate distance for your need. After installation, you can now enjoy your USB projection.

Desired Distance (m) <A>	Screen Size		Top <C>
	Diagonal (inch) <B>	W x H (cm)	From base to top of image (cm)
0.37	10	22 x 12	12
0.5	14	30 x 17	17
1.0	27	61 x 34	34
1.5	41	91 x 51	51
2.0	55	121 x 68	68
2.5	68	152 x 85	85
3.0	82	182 x 102	102
3.5	96	212 x 119	119
3.65	100	221 x 124	124

## Appendices

### Troubleshooting

Some solutions to problems that you may encounter:

#	Problem	Solution
1	No image appears on-screen	<ul style="list-style-type: none"> <li>• Make sure the USB cables are correctly and securely connected.</li> <li>• Make sure that your computer is turned on.</li> <li>• Please check to plug Master USB connector.</li> <li>• Recommend to use power adapter if not acer notebook.</li> </ul>
2	Image is out of focus	<ul style="list-style-type: none"> <li>• Adjust the focus dial.</li> <li>• Adjust the distance from the screen to suit your viewing needs.</li> </ul>
3	Image is too small or too large	<ul style="list-style-type: none"> <li>• Move the projector closer or further away from the screen.</li> </ul>
4	Image is flickering	<ul style="list-style-type: none"> <li>• Adjust power mode because USB power is not enough. Follow on-screen instruction to adjust.</li> <li>• USB power adapter in the market is for reference.</li> </ul>

### Specifications

Projection System	DLP®	Weight	176 g
Resolution	Native WVGA (854 x 480)	Dimensions	110 x 85 x 25 mm (4.3" x 3.3" x 0.98")
Displayable Colors	16.7 Million Colors		
Vertical Refresh Scan Rate	25 Hz to 86 Hz	Input Interface	DC IN x 1 USB 3.0 Micro B type x 1
Horizontal Scan Rate	30 KHz to 100 KHz	Power Supply	40W AC adapter (19V/2.54A, 100V ~ 240V AC) USB Power (type A) from NB
Projection Lens	F = 1.87, f = 11.00mm Manual Focus		
Projection Screen Size	10" (25 cm) ~ 100" (365 cm)	Power Consumption	23 W (maximum) by AC adapter
Aspect Ratio	16:9 (Native), 4:3		
Throw Ratio	55"@2 m (1.65:1)	Standard Accessories	AC adapter with AC plug x 1 USB Y-cable x 1 Pouch x 1 User's Guide (CD-ROM) x1 Quick start guide x1
Operating Temperature	5°C ~ 35°C / 41°F ~ 95°F		
Operating Humidity	35 ~ 80%RH		
Computer Compatibility	Windows XP/Vista/Win7		

## Compatibility Modes

### A. PC 4:3 timing

VGA Analog - PC Signal			
Mode	Resolution	V.Frequency (Hz)	H.Frequency [KHz]
SVGA	800 x 600	60	37.9
XGA	1024 x 768	60	48.4
SXGA	1280 x 1024	60	64.0
QuadVGA	1280 x 960	60	60.0
SXGA+	1400 x 1050	60	65.3
UXGA	1600 x 1200	60	75.0

### B. PC Wide timing

VGA Analog - PC Signal			
Mode	Resolution	V.Frequency (Hz)	H.Frequency [KHz]
WXGA	1280 x 768	60	47.8
WXGA	1280 x 720	60	44.8
WXGA	1280 x 800	60	49.6
WXGA	1024 x 768	60	59.9
WSXGA+	640 x 480	60	65.3
WSXGA+	800 x 600	60	67.5
WSXGA+	1024 x 768	60	47.7