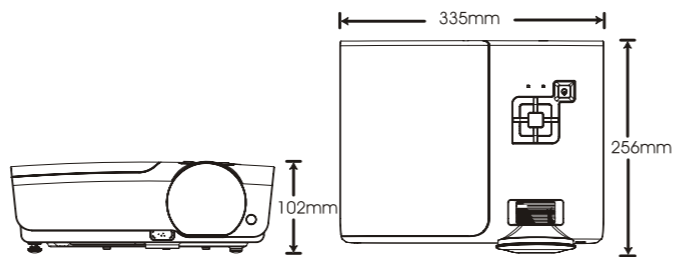


Specification

MODEL	H1080	H1082	H1085
Display Technology	0.65" 1-Chip DMD		
Resolution	Native 1920x1080		
Brightness	1600 Lumens	1800 Lumens	2000 Lumens
Contrast Ratio	4000:1	4000:1	5000:1
Zoom & Focus	Manual Zoom & Manual Focus		
Lens Throw Ratio	1.6-1.92		
Projection Screen Size	23.5"-300"		
Remote Control	Fully Featured IR Remote with Illuminated backlight		
Lamp	230W		
Aspect Ratio	Native (16:9) & Compatibility (4:3)		
PC Compatibility	VGA, SVGA, XGA, SXGA, UXGA, Macintosh, 1080p		
Video Compatibility	NTSC/NTSC 4.43, PAL B/G/H/I/M/N 60, SECAM, 480i/480p/720p/1080i/1080p		
PC input Terminals	VGA (15pin D-Sub) x 1, Composite Video (RCA x 1), S-Video (Mini DIN) x 1, Audio RCA x 1, Audio Mini-Jack x1, HDMI (V1.3)x 2		
Output Terminals	Audio Mini-Jack x 1		
Communication Terminals	USB (Service), RS-232C x 1, 12v Trigger		
Keystone Correction	Vertical (+/- 30 degree)		
Fan Noise Level	26dB (Standard-Mode), 30 dB (Boost Mode)		
Audio Speaker	5W Mono		
Projection Method	Front, Rear, Table Top and Ceiling Mount		
Dimensions (HxH xD)	13.2" x 4" x 10" (335x102x256mm)		
Weight	3.5kg (7.8 lbs)		
Power Supply	AC 100-240V		
Power Consumption	290W		
Feature	N/A	ISF ccc	ISF ccc
Accessory	AC Power cord, HDMI cable, Component cable, VGA-VGA cable, User Manual (CD), Remote Control, Batteries for Remote, Lens Cap, Carrying Case, Quick Start Guide		
OSD Language	English/French/German/Italian/Spanish/Korean/Simplified Chinese/Traditional Chinese /Russian/Czechoslovak/Portuguese/Polish/Swedish/Greek/Finnish/Dutch/Danish/Turkish Arabic/Hungarian		

Specification subjects to change without notice.



Best Energy Saving **RoHS** **Best Energy Saving**
 < 1w standby power consumption **COMPLIANT** ≤ 1W standby power consumption

A mission from Vivitek Environmental Protection

- ▶ Hi-efficiency power switching: reduces power consumption.
- ▶ Less than 1w power consumption in standby mode
- ▶ All Lead-Free components provides a Green environment

Convenience Preset Mode

H1080 series has fine tuned default setting for user to choose under different scenario and preference such as :

- ▶ Gaming Mode
- ▶ Movie Mode
- ▶ Film Mode
- ▶ Video Mode



Vivitek Corporation

[Http://www.vivitekcorp.com](http://www.vivitekcorp.com)

©2009 Vivitek Corporation, Values, Weights and dimensions shown are approximate. Errors and omissions accepted. Specification are subject to change without prior notice. This product maybe subject to export regulations. **vivitek** Is trademark of Vivitek Corporations. Projection images simulated.

2009/07



H1080 series
1080P Home Theater Projectors



H1080 / H1082 / H1085

True HD- High Definition

The beautiful new white H1080 home theater projector is Vivitek HD digital projector for home theater enthusiasts seeking Full HD quality with long standing visual performance. With stylish white finish, H1080 embodies the Vivitek Vivid Color, Vivid Life" mission with no hard edges.

True 1080p for home entertainment

H1080 Home Projector features 1080p Full HD (1920x 1080), different from semi-full HD 720p (1280x 720p), brings excellent true full HD video graphic



1080p

720p

Digital Zoom In

Digital Zoom In function has been implemented



Original

2 X Zoom in

4 X Zoom in

Video Enhancement

Vivitek H1080 features "ViviMotion" Cinema Image Quality adds 10 bit color processing for both analogue and digital sources, video enhancement, 12 bit De-Gamma, MPEG noise reduction, per pixel 3D noise reduction, etc.



With motion de-interlacing Without motion de-interlacing

Superior Video Image

The PixelWorks ImageProcessor deliver rich features and full 10-bit data processing for excellent video graphic quality. DNX (Digital Natural Expression), powered by Pixelworks enhances the quality of video images, delivering clear, natural looking HD video images.

3:2/2:2 pull down technology



3:2/2:2 Pull Down

Without 3:2/2:2 Pull Down

LAI Image Correction

H1080 includes advanced LAI (low-angle interpolation) Image Correction technology to reduce "Jaggy", flesh-tone correction, and vertical peaking to greatly enhance image sharpness for high-definition displays.



With LAI Image Correction

Without LAI Image Correction

Advanced 6 Segment Color Wheel

Advanced 6 Segment Color Wheel reduce the "rainbow effect", improve color saturation brings natural skin color, grass color etc, makes a generic 4 or 5 segment color wheel uncomparable.



6 Segment Color Wheel

4 Segment Color Wheel

3D Noise Reduction



With 3D Noise Reduction

Without 3D Noise Reduction

The input source may have video noise caused by poor lighting conditions, dropouts and other externally sourced noise. Beyond the obvious improvements from removing visible noise from the source video, Vivitek's ViviMotion 3D noise reduction also allows the codec's to work much more efficiently, creating high stream video eliminating noise level

ISF Function On Screen Display (H1082/H1085 only)

H1080 series features ISF function on OSD where locked Non-Volatile calibrated preset for superior video image fine tuned by ISF certified professional



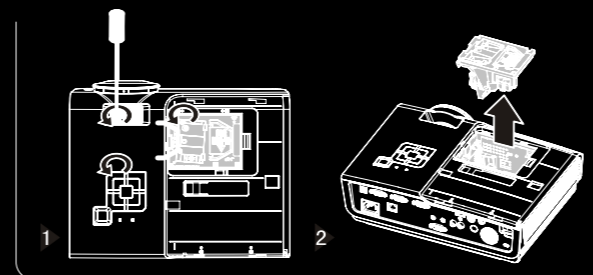
Various Input Connectivity

Surge Protection on sudden power cut off

Advanced built-in surge protection prevent Home Theater H1080 series being damaged from sudden power cut off.

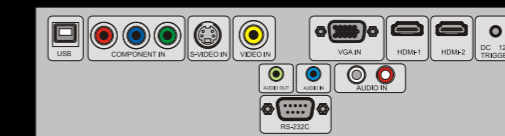
Sliding Top Cover Easy Lamp Replacement

Convenient top loading allows for quick and easy lamp replacement.



Rich connectivity

H1080 features 2x HDMI 1.3 increase overall capabilities to meet Full HD demand both audio and video. Few critical function has been added to HDMI 1.3 consist of:



Easy Access Remote Control

The H1080 series feature an easy button layout with most of the important features directly accessible. The remote lights up at the touch of a button and uses red backlighting for legibility in the dark. Most of the main video settings are directly accessible, including sharpness controls, picture controls, gamma setting, image size, and user-defined memories.



Projection Size & Distance

Screen Size (inch)	TELE	Wide
60	2.32	2.67
80	3.10	3.56
100	3.87	4.45
120	4.65	5.35
150	5.81	6.68
200	7.75	8.91
250	9.68	11.14

The above numbers are approximate, and may be slightly different from the actual measurements

