



HC3

HOME THEATRE PROJECTOR



Ultimate in home cinema projectors

16:9 wide screen format

Ultra compact design

 **MITSUBISHI ELECTRIC AUSTRALIA**

HC3 HOME THEATRE PROJECTOR

Key Features

A VARIETY OF USER-FRIENDLY FEATURES

- Vertical/horizontal Digital Keystone correction
- User programmable Splash Screen (screen capture)
- 2500 hours lamp life[†]
- System operation remote (Learning type)

FOR MORE ENJOYMENT FROM MOVIES TO GAMES

- User selectable gamma correction: Dynamic/Sport/Theater
- New 3D CineView (with 3-2 Pull-down)
- 3D Y/C digital comb filter & 3D noise reduction
- Versatile input terminals

Specifications

DISPLAY CHARACTERISTICS

Model	HC3
Display technology	0.7" Polysilicon panel x 3 (16:9 screen)
Resolution	960 x 540 (total 1,555,200 pixels), 540 video lines
Brightness	1300 lm (Maximum)
Colour	16,770,000 colours
Zoom / focus	Manual focus and zoom (zoom ration 1.2:1)
Picture size	40" ~ 300 (wide) (100" = 3.2m)
Source lamp	160W / 2500hrs (theater mode), 180W / 2000hrs (sport mode)
Computer compatibility	VGA® ~ XGA® (640 x 400 ~ 1024 x 768) Sync on green available
Video compatibility	NTSC / NTSC 4.43 / PAL (including PAL-M, N) / SECAM / PAL-60 / Component Video (DVD / HDTV) (480i, 576i, 480p, 576p, 720p, 1080i), SCART (RGB + 1V sync)
Input terminals	PC: mini D-sub 15 pin x 1, Video: RCA + S-Video x 1, Audio: RCA (L, R) x 1
Communication terminals	RS-232C x 1 (8-pin)
Audio speaker	2W mono
Dimensions (W x H x D)	275 x 70 x 261 mm / 10.8" x 2.8" x 10.3" (excluding all protrusions)
Weight	2.7kg / 5.9lbs
Power supply	AC 100 ~ 240V / ±10%, 50/60Hz

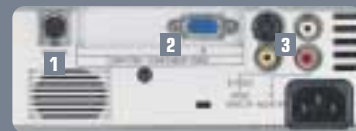
[†] Approx fig. representing average operating lifecycle

*XGA and VGA are registered trademarks of IBM Corporation.

*All brand names and product names are trademarks, registered trademarks or trade names of their respective holders.



System
Operation
Remote
Control



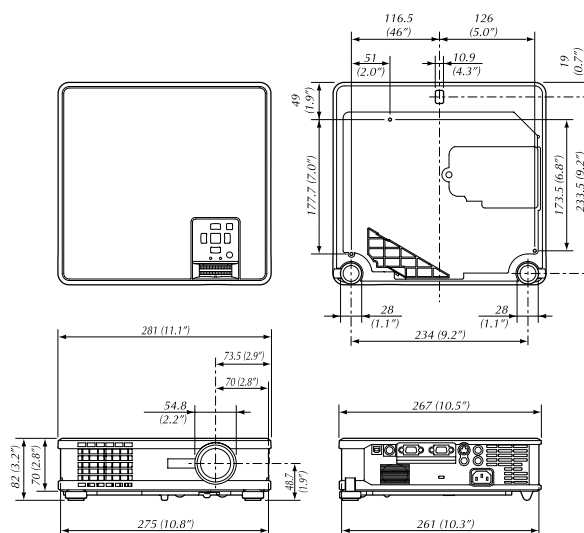
Input Terminals
1 Serial Terminal RS-232C x 1 (8-pin)
2 PC/Component Video Input (mini D-sub 15-pin)
3 S-Video/Video/Audio Input



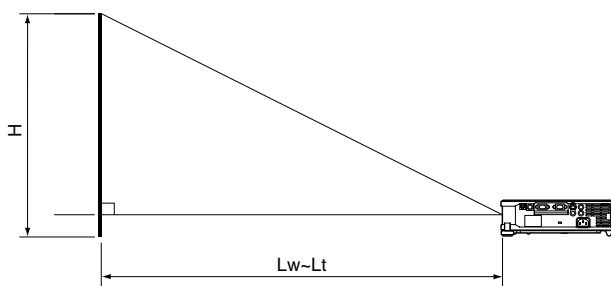
VLT-HC3LP
Replacement
lamp

DIMENSIONS

UNIT: MM (INCH)



PROJECTION DISTANCE AND SCREEN SIZE



Screen				Distance from screen					
Diagonal Size		Width		Height		Max. Zoom		Min. Zoom	
inch	cm	inch	cm	inch	cm	inch	m	inch	m
40	102	35	89	20	50	50	1.3	60	1.5
60	152	52	133	29	75	76	1.9	92	2.3
80	203	70	177	39	100	102	2.6	123	3.1
100	254	87	221	49	125	128	3.2	154	3.9
150	381	131	332	74	187	192	4.9	232	5.9
200	508	174	443	98	249	257	6.5	309	7.9
250	635	218	553	123	311	322	8.2	387	9.8
300	762	261	664	147	374	387	9.8	-	-



Mitsubishi Electric Australia Pty. Ltd. 348 Victoria Rd, Rydalmere NSW 2116
Ph: (02) 9684 7777 Fax: (02) 9684 7208 www.MitsubishiElectric.com.au

* Specifications are subject to change without notice

BEI/PRJ/HC3/0604/1