

# One Luxury You Can't Afford to Be Without

Movie lovers rejoice, for the heart-pounding excitement of wide-screen home theater is a lot closer than you think. With its full 16:9 viewing aspect and 100" projection from a short throw distance, SANYO's PLV-Z2 LCD home theater projector frees your movies from the limitations of a small screen. Cutting-edge technology, meanwhile, ensures high-resolution images with a high contrast ratio. Along with the PLV-Z2's exceptional image quality, you get the flexibility to create the ideal set-up for your room. Go ahead, treat yourself to the affordable luxury of SANYO's PLV-Z2.



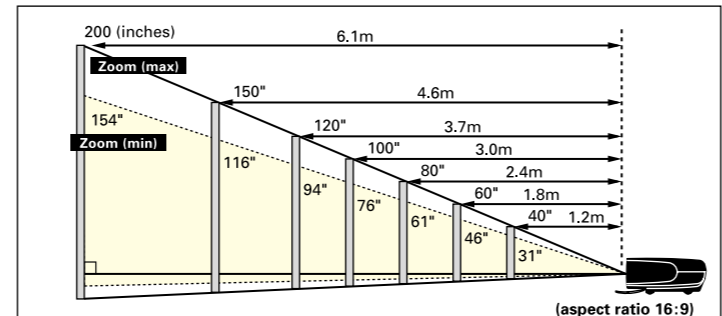
## PLV-Z2

## Micro Portable Multimedia LCD Projector



Entertain in Style

### Approximate throw distance/picture size



Aspect ratio 16:9

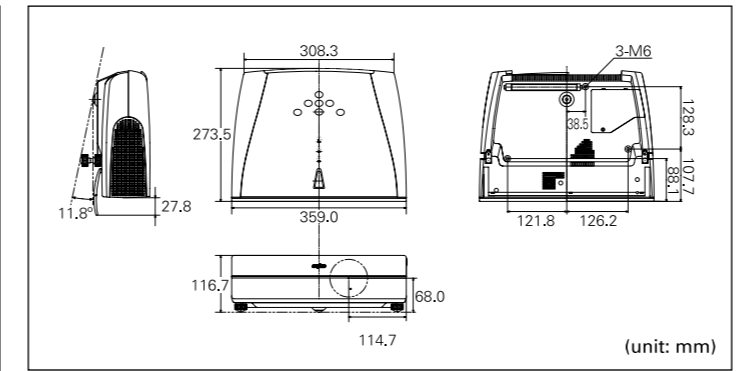
Screen size (inches)	200	150	120	110	100	90	80	70	60	40	30
Zoom (max)	6.1m	4.8m	3.7m	3.4m	3.0m	2.7m	2.4m	2.1m	1.8m	1.2m	—
Zoom (min)	—	5.8m	4.8m	4.4m	4.0m	3.8m	3.2m	2.8m	2.4m	1.6m	1.2m

Aspect ratio 4:3

Screen size (inches)	164	150	120	110	100	90	80	70	60	40	25
Zoom (max)	6.1m	5.6m	4.5m	4.1m	3.7m	3.3m	3.0m	2.6m	2.2m	1.5m	—
Zoom (min)	—	(6.1m)	5.8m	5.3m	4.8m	4.3m	3.9m	3.4m	2.9m	1.9m	1.2m

Approximate throw distances shown above were calculated on lens design specifications. Please note that up to 5% deviation may result due to lens variation.

### External dimensions

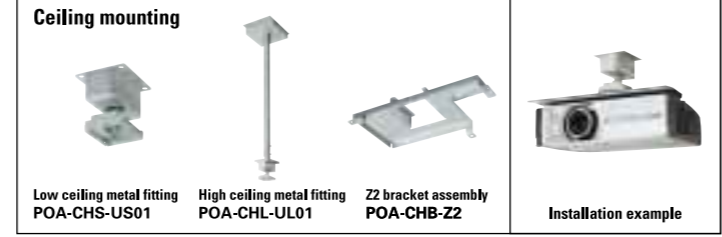


### Specifications

Model number	PLV-Z2
LCD panel system	Three 0.7 (1.78cm) TFT active matrix type panels
Optical system	Dichroic mirror separation/prism
Panel size	Three 0.7-inch panels, 16:9 aspect ratio
Panel resolution	1,280 x 720 dots
Number of pixels	2,764,800 (921,600 x 3)
Pixel arrangement	Stripes
Projection lens	F2.04 to F2.54, f=21.5 to 27.7mm, 1x to 1.3x manual zoom and focus
Projection lamp	135W UHP lamp
Screen size	Adjustable from 31 to 200 inches
Throw distance	From 1.2 m to 6.1 m
Picture brightness	800 lm
Uniformity	85% (Corner to center)
Contrast ratio	1300:1 (Lamp mode: react image (Auto), Variable iris: max.)
Fan noise	24dBA (Lamp mode: theater black)
Scanning frequency	H sync: 15-80kHz, V sync 50-100Hz
Dot clock	100MHz or less
Color systems	PAL, SECAM, NTSC, NTCS 4.43, PAL-M, PAL-N
Video signals	Composite, S-Video, Component
Video terminals	RCA 4-Input: Video, Y-Pb / Cb-Pr / Cr Mini-DIN 4-pin: S-Video 1-Input
Computer compatibility	SXGA / XGA / SVGA / VGA / MAC
Computer terminals	DVI for computer input and AV input (HDCP)
Communication terminal	Service port (RS-232C)
Operating temperature	5 to 35°C
Rated power supply	100-240V AC, 50 Hz/60 Hz auto voltage selection
Power consumption	210W 180W (Lamp mode: theater black)
Dimensions	359 (W) x 116.7 (H) x 273.5 (D) mm
Net weight	4.1 kg (9.0 lbs.)
Standard accessories	•AC Power cord (2m) •Wireless Remote control unit •Video cable (3m)

\*Specifications subject to change without notice.

### Options



### Optional cables

Product	DVI-scart cable	DVI-component cable	DVI-VGA cable
Model number	POA-CA-DVISC	POA-CA-DVIC	POA-CA-DVIVGA

### Safety Precautions

- Do not install the LCD projector in areas exposed to water, humidity, dust, oil or smoke, or in close proximity to heat sources. Make sure the heat vents are not blocked. Fire, electrical shock or unit malfunction may result if the above precautions are neglected.
- Do not look through the lens while projecting, as damage to the eyes could result. Take special care when children are close by.

### Remarks

- Spare LCD projector parts are kept in stock for at least eight years after the product is discontinued.
- LCD panel manufacturing requires extremely high-precision technology, with pixels having a 99.99% quality control rating. However, there does exist a 0.01% or smaller possibility of dead pixels or constantly-lit pixels.
- Please note that product colors in the brochure may differ slightly from those of actual products.
- All screen pictures in the brochure are simulated.
- All company and product names are the trademarks or registered trademarks of their respective owners.
- Product appearance and specifications are subject to change without notice.

### What is HDCP/HDCP technology?

HDCP is an acronym for High-bandwidth Digital Content Protection. High-bandwidth Digital Content Protection (HDCP) is a system for preventing illegal copying of video data sent over a Digital Visual Interface (DVI). If you are unable to view material via the DVI input, this does not always mean the projector is not functioning properly. With the implementation of HDCP, there may be cases in which content protected by HDCP will not be displayed, due to a decision by the HDCP community (Digital Content Protection, LLC).

Further details regarding this product can be accessed at <http://www.sanyo-lcdp.com/english/>

**\*Caution:** please consult the instruction manual to ensure safe and proper operation of the product.



Distributed by:



View :: Compare :: Select - [www.ProSelecta.com](http://www.ProSelecta.com)



## Enjoy Higher Resolution Images from Your DVDs

### Wide 16:9 LCD Panels with 2,764,800-Pixel High Resolution

The PLV-Z2 employs three 0.7-inch polysilicon Thin Film Transistor (TFT) LCDs with real 1,280 line X 720 dot resolution, for an impressive total of 2,764,800 pixels. This high-resolution wide screen achieves 100" projection even in small rooms. Projecting the full size of your DVD images, the PLV-Z2's 16:9 wide LCD panel re-creates the excitement and powerful visuals of the movie theater.



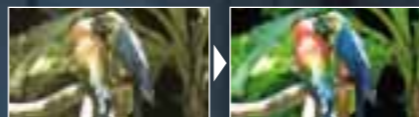
16:9 Wide LCD panel



High-Impact 16:9 wide screen

### High-Quality Technology for Clearer Image Projection

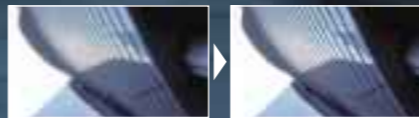
**The High-Color-Purity Optical System**  
The High-Color-Purity Optical System divides the lamp light into the three primary colors of red, blue and green, and projects them separately onto the screen. By eliminating color mixing, the PLV-Z2 creates a high-quality digital video image with faithful color reproduction.



Faithful color reproduction

### Progressive Scan Ensures High-Resolution Video Images

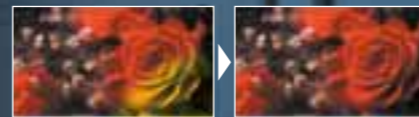
A progressive scan IC ensures superb, high-resolution video images and excellent diagonal resolution.



Progressive Scan

### 3D AUCC for Whole-Screen Brightness Uniformity

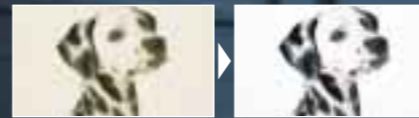
Balancing uneven color and brightness gradations, the 3D AUCC (Automatic Uniformity Correction Control) circuit ensures a projected image with higher brightness uniformity. You can enjoy high-resolution big-screen images with image clarity across the whole screen.



3D AUCC

### Black and White Extension Circuit for Crystal Clear Images

The Black and White Extension Circuit automatically adjusts the range of black and white contrast in line with the input signal, thus expanding the range of reproducible gradations of black and white and ensuring sharper image resolution.



B&W Extension Circuit

### High Contrast Ratio of 1300:1\* for Real Blacks

How well blacks are rendered has a crucial impact on the contrast and overall quality of your video image. Thanks to SANYO's original Dimmer and Lens Diaphragm, the PLV-Z2 achieves a remarkable contrast ratio of 1300:1\*. The Dimmer measures screen brightness and automatically determines the appropriate volume of light for the lamp. This way, problems with glaring whites or murky, undifferentiated blacks are resolved, as is the problem of a 'grey-black' screen. The result: a high-contrast, three-dimensional image with stunningly real blacks.



High contrast image

\* Lamp mode: react image (Auto), Variable iris: max.

### User-Controllable 10-Bit Digital Gamma Correction

In addition to Standard mode, Cinema mode for movies, and Real mode for graphics, four user-settable gamma correction modes are available.

### 5-Step Color Temperature Selection

Color temperature can be adjusted in five steps, depending on program source, to maximize viewing pleasure.

### Adjustable White Balance to Match Your Viewing Requirements

### High-Resolution Connection to Other Devices

The PLV-Z2 offers the option of two component inputs. Components can be connected via the standard input or, if optional converter cables are used, via the DVI terminal. Also, for your further convenience, the DVI terminal is compatible with HDCP (High-bandwidth Digital Content Protection).\*

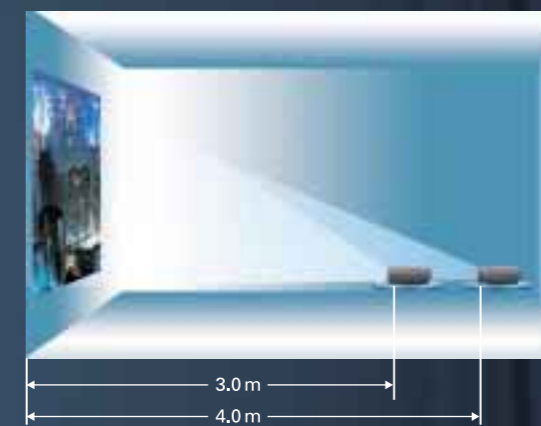
\* If the HDCP standard changes, you may not be able to display images input via the DVI terminal.



## Set-up Flexibility Lets You Project a 100" Screen, Even in a Small Room

### Short Throw Zoom Lens Ensures Impressive 100"-Screen Projection from a Short Distance

The short throw zoom lens, with its 1.3x optical zoom, projects images onto a 100" screen from a throw distance of between 3 and 4 meters. With large-screen projection now possible in small rooms, you can bring the visual realism of the theater to your home.



### Vertical and Horizontal Lens Shift Adjusts Projected Screen Without Impairing Image Quality

The vertical and horizontal lens shift allows you to adjust the screen position easily, without having to move the actual body of the projector. Lens shifting is not a digital process, but a physical repositioning of the lens itself. This means the adjusted image suffers no visible deterioration, even when shifted up to  $\pm 100\%$  vertically or  $\pm 50\%$  horizontally. So, even if the set-up location is not quite right, the projected image will remain intact. Along with the vertical and horizontal flip functions, the lens shift function provides the flexibility to set up the projector in line with room conditions — it can be hung from the ceiling, put on a shelf, or hung on a wall.



N.B. When shifting over  $\pm 50\%$  vertically, you cannot shift the full  $\pm 50\%$  horizontally. When shifting over  $\pm 25\%$  horizontally, you cannot shift the full  $\pm 100\%$  vertically.

### Digital Keystone Correction Provides More Set-up Options

Set-up flexibility is enhanced not only by the lens shift function, but also by digital keystone correction, which compensates for keystone (trapezoidal) picture distortion up to  $\pm 20^\circ$  vertically.



### Fan Control System Reduces Unwanted Noise

The PLV-Z2 makes an exceptionally low 24dBA\* of noise. Its intelligent Fan Operation Linear Control System adjusts the revolving speed of the small, low-noise cooling fan in line with changes in ambient temperature. With undesirable fan noise thus reduced, it's now possible to enjoy those quiet video scenes without a common source of distraction.

\*Lamp mode: theater black

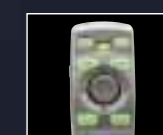
### Unobtrusive Design Ideal for Storage

The PLV-Z2's drop-down panel not only protects the lens, it also helps give the projector a sleek, minimalist profile. So, when it's not in use, the PLV-Z2 blends in seamlessly with its surroundings.



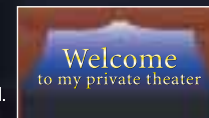
### Multifunction Remote Control

Illuminated buttons ensure easy operation, even in the dark.



### 'My Screen' Function Provides On-Screen Projection of Your Favorite Captured Image

With the My Screen function, you can easily capture your favorite projected image and use it as a startup screen or a default screen. You can also project the image whenever you want by using the My Screen button on the remote control.



N.B. Only signals input from a DVI terminal can be used for the My Screen function. You cannot capture RGB digital/analog signals with resolution over 1024 lines x 768 dots. When you capture your original image, the existing preset image will be erased.

**Z2**  
MULTIMEDIA LCD PROJECTOR

**SANYO'S HOME THEATER PROJECTOR**

