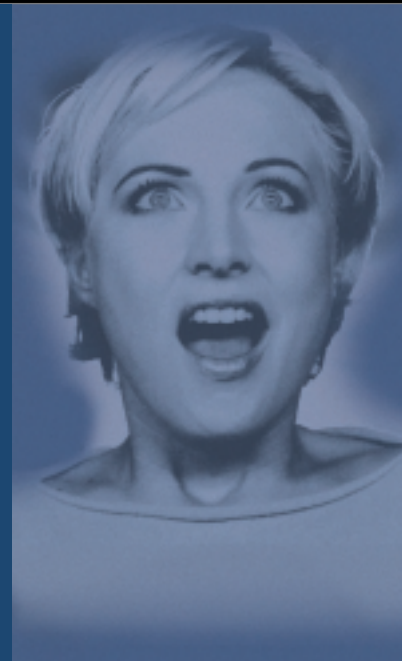


SHARP VISION

SHARP VISION

XV-Z9000U High Definition DLP™ Front Projector

MEET THE WORLD'S MOST POWERFUL MOVIE PRODUCER...



XV-Z9000U High Definition DLP™ Front Projector



SHARP ELECTRONICS OF CANADA LTD.

Retail Sales Group

335 Britannia Road East, Mississauga, Ontario L4Z 1W9

Phone: Call us at 1 800 56-SHARP

Web site: www.sharp.ca

Digital Light Processing, DLP, Digital
Micromirror Device and DMD are
trademarks of Texas Instruments.

amazing



...WITH AN AMAZING WIDESCREEN HIGH DEFINITION PICTURE

The XV-Z9000U fits perfectly in any home theater system. Its designer style and elegant lines fit any décor – and its fan has been engineered to operate at the lowest possible noise levels. (You'll never know it's there.) And, once you consider the XV-Z9000U's distinct custom installation features, the possibilities are endless.

The XV-Z9000U also includes an optical lens shift – so you'll have artifact-free images at virtually any installation angle without keystoneing. And RS-232 provides the ultimate in control for most sophisticated home theater systems. Sharp has also included a comprehensive jack-pack with three component video inputs for HDTV decoders, DVD players, satellite receivers and other high-end video sources.

colour



Finally, a projector that produces pictures that take home theater to the next level!

Sharp's new XV-Z9000U goes a step beyond other projectors – it captures all of the details of your favourite movies with amazing clarity, brilliant colour and exceptional contrast. This projector is widescreen, full High Definition, and ready to showcase all of today's blockbusters in their original big-screen glory – right in the comfort of your own home.

clarity

How? The answer lies within the technology and engineering. This projector boasts high resolution, unrivaled contrast, stellar brightness and absolutely precise colour. And it's all found in a convenient home theater package.

HIGH DEFINITION THEATER COMES HOME

With this projector, Sharp is introducing a winning combination: full High Definition resolution – and the Digital Light Processing™ technology made by Texas Instruments. In fact, the XV-Z9000U is the world's first front projector to use High Definition DLP™ single-panel architecture. DLP™ projectors utilize a reflective display technique that uses hundreds of thousands of tiny, fluttering mirrors to project an ultra high-resolution image. The result is pure brilliance. When you see the XV-Z9000U in action, you'll agree that its images are incredibly clear, its contrast superb, and its colours absolutely true to life.

This projector is compatible with 1080i and 720p HD images, and it has a native resolution of 1280 x 720. For standard video signals, Sharp has also included CV-IC, its advanced proprietary video scaling technology, to upconvert standard signals to the XV-Z9000U's native HD resolution! And 3:2 pull-down recognition guarantees an accurate reproduction of film source material.



SCREEN IMAGE SIMULATED

contrast

COMPARE AND CONTRAST

When it comes to image reproduction, the XV-Z9000U is incomparable. DLP™ technology, along with Sharp's advanced optical design, produces an exceptional 1100:1 contrast ratio that yields unsurpassed depth of field imagery. The XV-Z9000U utilizes a high-power 250-watt lamp that projects 800 brilliant ANSI lumens while maintaining precise colourimetry. The projector also includes a 5X colour wheel (with 6 individual colour segments) that enables rock-solid colour reproduction regardless of video source.

SHOW A LITTLE APPRECIATION

If you want to watch today's movies the way in which Hollywood originally intended, Sharp's XV-Z9000U is the obvious choice. It's the world's first wide-screen home theater front projector that employs DLP™ technology, so you know that you'll see all of a film's details – and enjoy all of its magic. Hollywood deserves that. And so do you.

XV-Z9000U

GENERAL FEATURES

- The World's First High Definition DLP™ Front Projector
- High Definition 720 Progressive Native Display
 - Widescreen (16:9) Digital Micromirror Device™ Semiconductor
 - 6-Segment, 5X-Speed Colour Wheel
 - Sharp Proprietary CV-IC Video Scaler Technology
 - Film Mode with 3:2 Pull-Down Recognition for 24Hz Originated Content
 - Super High Contrast Ratio (1100:1)
 - High Brightness (800 AL)
 - 250 Watt NSH Lamp for Precise Colour (User Replaceable)
 - Whisper Quiet, Scirocco Fan (32dB)
 - HD Input (1080i/720p/480p) Compatible
 - Component YPrPb and RGBHV Compatible
 - Optical Lens Shift Function for Flexible Installation
 - Digital Keystone Correction
 - 6-Position Aspect Ratio Control
 - 7-Position Colour Temperature Adjustment
 - 4-Position Advanced Gamma Correction
 - 12V Screen Trigger Output
 - RS-232C Control Interface
 - Advanced Bit Map Graphical User Interface
 - Lighted Remote Control with Direct Input Access

INPUT/OUTPUT

Inputs

Video

Control

Outputs

SPECIFICATIONS

Panel

Number of Pixels

Resolution

HDTV Compatibility

Computer RGB Input Signals

Video System

Lens

Lens Shift

Projection Size

Luminance

Contrast Ratio

Power Source

Power Consumption

Projection Lamp

Lamp Life

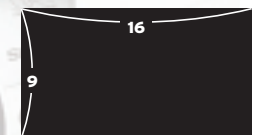
Dimensions (W x H x D)

Weight

PROJECTION DISTANCE

Screen Size (16:9)			Projection Distance (L)	
Diag.	Width	Height	Maximum	Minimum
250"	218"	123"	45' 1"	33' 3"
200"	174"	98"	36'	26' 7"
150"	131"	74"	27'	19' 11"
133"	116"	65"	23' 11"	17' 7"
106"	92"	52"	18' 11"	13' 11"
92"	80"	45"	16' 5"	12' 1"
84"	73"	41"	15'	11' 1"

16:9 Screen



SHARP VISION®



YPbPr/RGBHV (switchable) x 2 (5 RCA)

RGBHV (PC only) x 1 (15 pin D-Sub)

S-Video x 1 (4 pin DIN)

Composite x 1 (RCA)

RS-232C x 1 (9 pin D-Sub)

Wired remote

12V DC trigger

0.8" (2.0cm) DMD™ Chip

921,600 pixels (1280 x 720)

520 TV lines (480i input), 750 lines (DTV 720p input)

1080i (in intelligent compression), 720p, 480i/p

SXGA, XGA, Mac 21", 19" (in intelligent compression), SVGA, VGA, VESA, Mac 16"/13"

15-81 kHz (horizontal), 43-100 Hz (vertical), 12-120 MHz (pixel clock)

NTSC/NTSC 4.43/PAL/PAL (60Hz)/PAL-M/PAL-N/SECAM

1:1.35 manual zoom and focus

Manual optical lens shift

25" - 300"

800 ANSI lumens

1100:1

100-240V AC, 50/60Hz (multi-voltage)

365W (standby 0.1W)

250W NSH

2000 hours

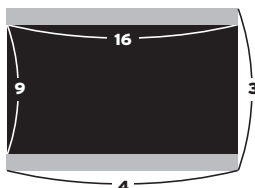
18.7" x 7" x 19.5" (475 x 178 x 496mm) (including terminal cover)

18.7" x 7" x 16" (475 x 178 x 406mm) (main body only)

20.9lb (9.5kg)

Screen Size (4:3)			Projection Distance	
Diag.	Width	Height	Maximum	Minimum
250"	200"	150"	41' 4"	30' 6"
200"	160"	120"	33'	24' 4"
150"	120"	90"	24' 9"	18' 3"
100"	80"	60"	16' 5"	12' 1"
84"	67"	50"	13' 9"	10' 2"
72"	58"	43"	11' 10"	8' 8"

4:3 Screen



Design and specifications are subject to change without notice.

All trademarks and registered trademarks are the property of their respective owners.

The XV-Z9000U is backed by a 1-year in-home parts and labour limited warranty that covers the entire unit. The projection lamp is warranted for 90 days. (See your authorized SharpVision dealer for details.)