

Spec.						
Model	ANX300	ANX350	ANX355	ANX425	ANW365	ANWU405
Optical Spec.						
Brightness	3000	3500	3500	4200	3600	4000
Display Technology	3LCD					
Contract Ratio	3000:1 (with Saver mode)	3000:1(with Saver mode)	15000:1(with IRIS&ECO mode)	15000:1(with IRIS&ECO mode)	15000:1(with IRIS&ECO mode)	15000:1(with IRIS&ECO mode)
Resolution	XGA (1024x768)	XGA (1024x768)	XGA (1024x768)	XGA (1024x768)	WXGA (1280 x 800)	WUXGA (1920 X 1200)
Lamp Consumption	Philips:218W					Philips:225W
Noise	ECO: MAX 34.9dB ; Normal: 38.9dB					
Lamp Life time	5000H(Normal) /10000H(ECO)					
Aspect Ratio	4:3(Standard) / 16:9 (Compatible)				16:10(Standard) 4:3 (Compatible)	16:10 (Standard) 16:9 (Compatible)
Projection Lens						
Zoom/Focus	Manual					
Throw Ratio	1.48-1.78 : 1					
F	F:2.1-2.25	F:1.6-1.76	F:1.6-1.76	F:1.6-1.76	F:1.6-1.76	F:1.6-1.76
f	f=19.109-22.936mm	f=19.158-23.018mm	f=19.158-23.018mm	f=19.158-23.018mm	f=19.158-23.018mm	f=19.158-23.018mm
Screen Size	0.887-10.899m (30"-300")	0.888-10.937m (30"-300")	0.888-10.937m (30"-300")	0.888-10.937m (30"-300")	0.942-11.595m (30"-300")	0.942-11.595m (30"-300")
Generic Spec.						
Speaker	N/A		1*10W			
Scanning Frequency	Hsync Frequency 15-100KHz / Vsync Frequency 48-85Hz					
Computer Signal Input	PC, VGA, SVGA, XGA, SXGA, WXGA, UXGA, WUXGA, Mac					
Video Compatibility	PAL, SECAM, NTSC 4.43, PAL-M, PAL-N, 480i, 480p, 576i, 576p, 720p, 1080p and 1080i					
Power Consumption	270W(ECO: <0.5W)					280W(ECO: <0.5W)
ECO Standby Mode	<0.5W					
Network standby	N/A		<3W			
Keystone Correction	V: ±30°(manual)		V: ±30°(auto+manual), H: ±15°(manual), Pincushion/Barrel Correction, Corner Keystone			V: ±30°(auto+manual), H: ±15°(manual), Corner Keystone
OSD(Languages)	26 languages: English, German, French, Italian, Spanish, Polish, Swedish, Dutch, Portugese, Japanese, Simplified Chinese, Traditional Chinese, Korea, Russian, Arabic, Turkish, Finnish, Norwegian, Danish, Indonesian, Hungarian, Czech, Kazak, Vietnamese, Thai, Farsi					
Input Terminals	VGA x1, YCbCr/ Component x1(share with VGA in1); Video x1; S-video x1(share with VGA in1); HDMI x1		Audio in (mini jack,3.5mm) x1, YCbCr/ Component x1(share with VGA in1), Video x1;Audio in(L/R)-RCAx2, S-video x1(share with VGA in1), HDMI x2(One is Compatible with MHL), USB-Ax1 (support MemeoryViewer and WiFi Dongle(Optional)), USB-Bx1(Display), RJ45x1(Display)			
Output Terminals	VGA x1		VGA x1(Share with VGA IN 2), Audio out (mini-jack,3.5mm) x1			
Other Terminals	RS-232x1		RS-232x1, RJ45 x1(for control), USB-Bx1(for up-grade)			
Mechanical Spec.						
Power Requirement	AC 100 - 240 V ~ 50-60 Hz					
Net. Weight(KG)	3.2 kg					
Max Dimensions	347(W) x 257(D) x 109(H) mm					
Accessories						
Standard	Power cord, VGA cable, Remote control, Service Card, QSG(for Projector)					

*specifications subject to change without notice.

Peojection distance *All measurements are approximate and may vary from the actual sizes.

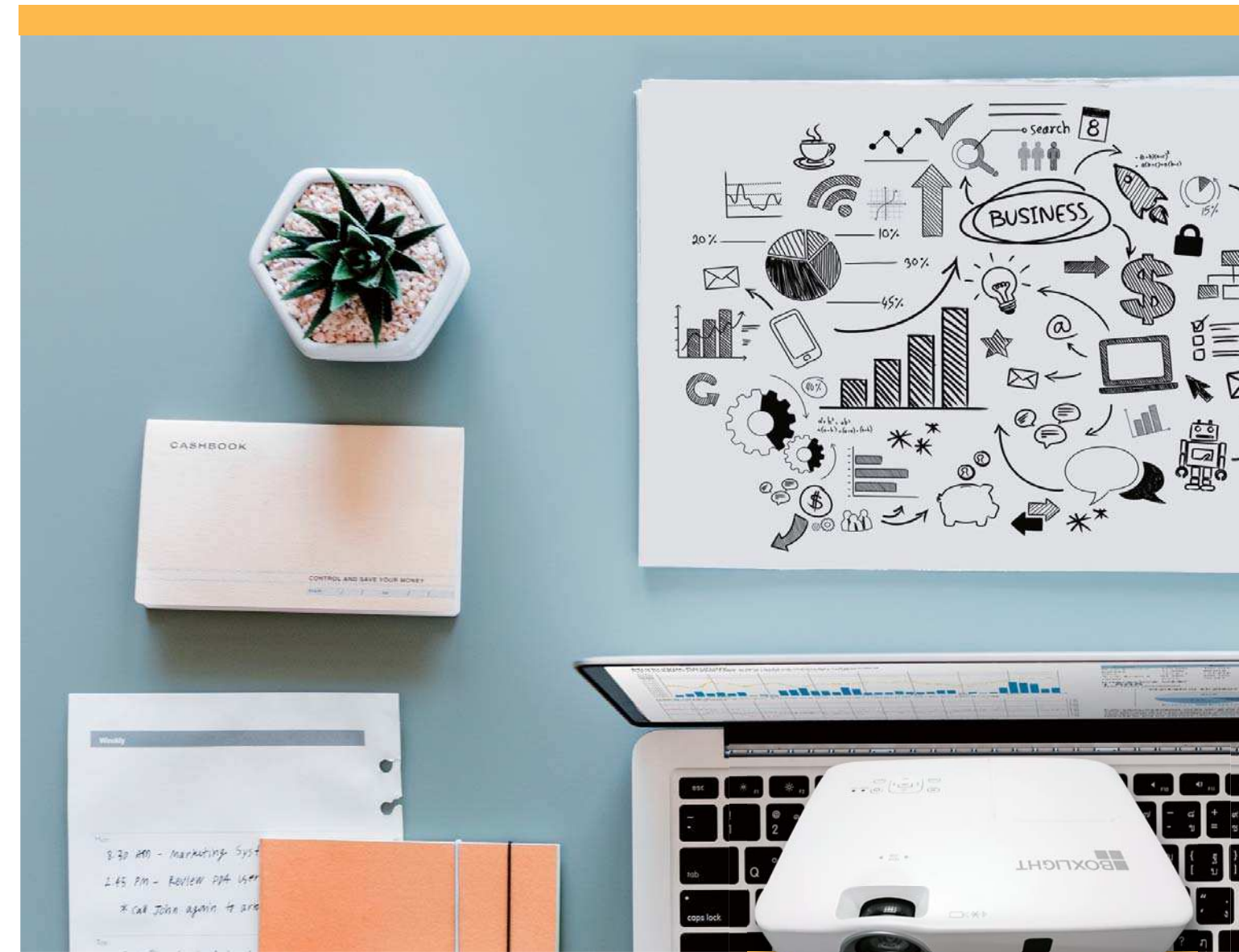
Model	Screen Size	4:3		16:9		Model	Screen Size	16:10		16:9		Model	Screen Size	16:10		16:9	
		Maximum	Minimum	Maximum	Minimum			Maximum	Minimum	Maximum	Minimum			Maximum	Minimum	Maximum	Minimum
ANX300 ANX350 ANX355 ANX425	30"	0.9m	1.1m	1.0m	1.2m	ANW365	30"	0.9m	1.1m	1.0m	1.2m	ANWU405	30"	0.9m	1.1m	0.9m	1.1m
	100"	3.0m	3.6m	3.3m	4.0m		100"	3.2m	3.8m	3.3m	4.0m		100"	3.0m	3.6m	3.0m	3.7m
	150"	4.5m	5.5m	5.0m	6.0m		150"	4.8m	5.8m	5.0m	6.0m		150"	4.5m	5.4m	4.6m	5.5m
	200"	6.1m	7.3m	6.6m	7.9m		200"	6.4m	7.4m	6.6m	7.9m		200"	6.0m	7.1m	6.1m	7.3m
	300"	9.1m	10.9m	9.9m	11.9m		300"	9.6m	11.6m	9.9m	11.9m		300"	8.9m	10.7m	9.2m	11.0m

Appearance



ANX355 / ANX425 / ANW365 / ANWU405

ANX300 / ANX350



Portable Projector

ANX300 / ANX350 / ANX355 / ANX425 / ANW365 / ANWU405

Easy for Installation. Vivid Color Performance. Wifi Display Function.

- Powerful correction function
- Latest IRIS technology
- Len Shift Function
- 3LCD color balance
- Up to 10,000 hrs lamp life time(ECO)
- Available display via USB or RJ45 cable
- Using with mobile device
- Plentiful and practical projector display modes



Portable Projector

ANX300 / ANX350
ANX355 / ANX425
ANW365 / ANWU405

Brightness: 3000lm ~ 4200lm.

We can provide the true brightness. While use the projector indoor, there can keep the light on and have the vivid color performance.



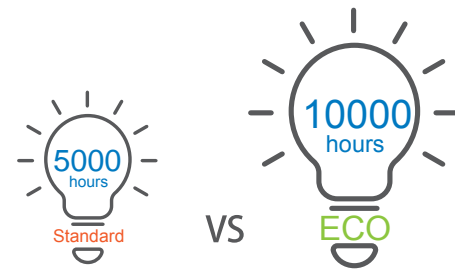
Color: 3LCD let the color performance more balance.

Used with 3LCD technology, output vivid color performance, exquisite picture quality with different brightness to show a clear, bright, natural images to you during the business presentation. Provide the users a particularly prominent experience.



10,000 hours lamp life time, allowing the customer user-friendly feeling.

Up to 10,000 hours life time(ECO mode), it can tremendously reduce the supplies and save the cost.



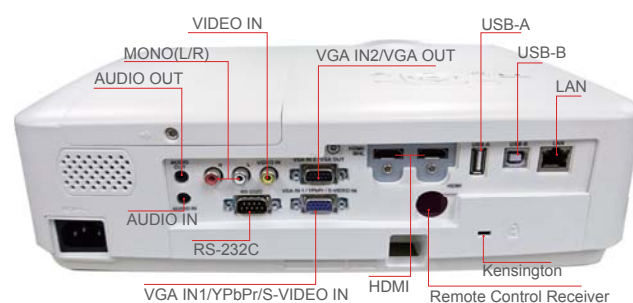
Logo capture function in start screen.

By means of OSD menu selection, users can set their own business or personal images as a start logo. In the external demo companies or individuals can show their unique image, breaking the stereotyped image of the default start logo.



Plentiful interface, more expanded display interface: RJ45 & USB. *ANX300 & ANX350 doesn't support this function.

Not only the mainstream interface but also LAN & USB terminals can project any kind of signals. USB slot can support data reading such as jpeg or pdf.



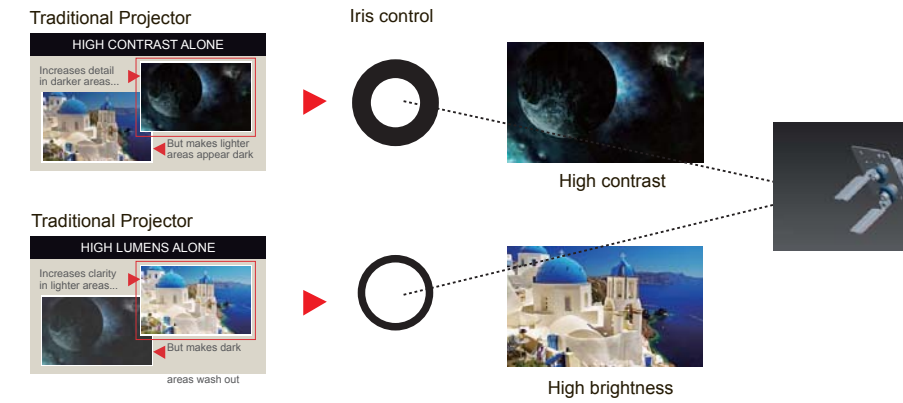
ANX355 / ANX425 / ANW365 / ANWU405



ANX300 / ANX350

Contrast: The latest IRIS increase the contrast.

Using the latest dynamic IRIS contrast enhancement technology, greatly enhance the contrast of picture. Compared to traditional LCD projectors it can provide the highest 3000:1 / 15000:1 contrast ratio, the perfect purest black in the presentation, and the clear picture, structured and subtle image to bring superior visual impact.



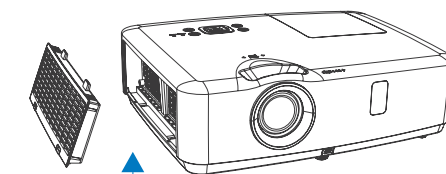
Powerful correction function.

Having the convenient manual and automatic Vertical correction, and manual Horizontal correction function. Moreover, user can use Corner Keystone, Pincushion/Barrel Correction* to adjust the projected picture. Ensure user can project in any uneven surface. *ANWU405 doesn't support this function. / ANX300 and ANX350 support Vertical only.



Rigid dustproof design.

High efficiency HEPA electrostatic dust filter can effectively extend the projector life to ensure the image quality. Projector built-in auto-detected system, always checks the projector's air volume, and automatically detects whether the filter is blocked. It can actively give the alarm to clean up the filter message to protect the machine and improve the service life.



Quick-release Filter
Mak it easy to installed

Select color modes by customer demand.

Dynamic, standard, cinema, blackboard, color palette and other projection mode, whether in bright or blackboard, white wall environment can be adjusted to the most suitable screen color performances to enjoy the real wonderful screen.

Double password lock and dual anti-theft function.

User's power-on password protection and keyboard or remote control lock function can avoid the projector error operation and theft. In addition, the projector is equipped with Kensington anti-theft lock slot and put the stolen bar, put on the chain can be used to prevent the projector being stolen.