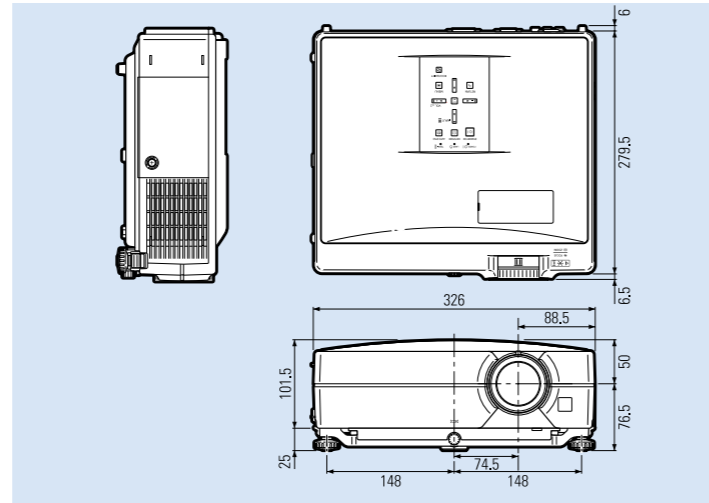


# XG-C430X/XG-C335X/XG-C330X



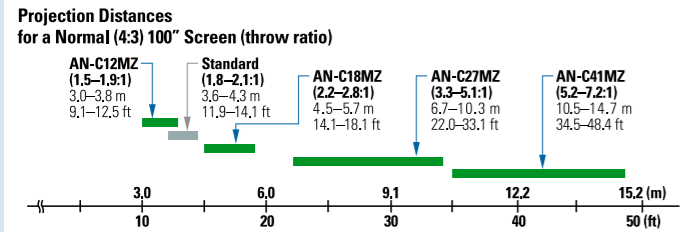
The product pictured is the XG-C430X, which is identical in appearance to the XG-C335X and the XG-C330X with the exception of the model number indication.

## Dimensions (Units: mm)



## Optional Accessories

### Lenses



### Lamp



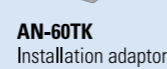
### USB Remote Receiver



### Cable



### Ceiling Mounts



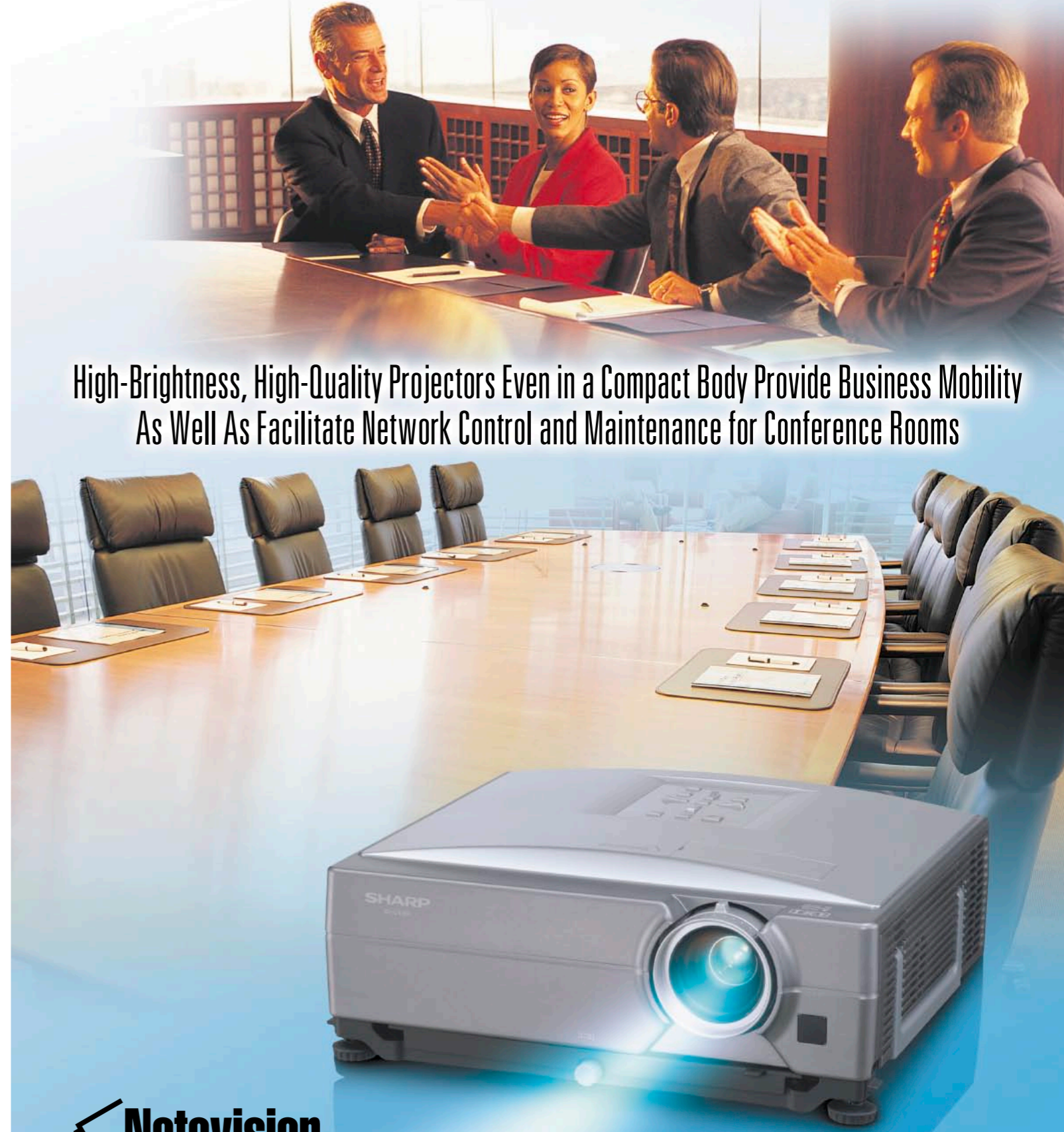
## Specifications

Model	XG-C430X	XG-C335X	XG-C330X
Panels	Poly Silicon 0.8" TFT LCD x 3 with Micro Lens	Poly Silicon 0.8" TFT LCD x 3	
Number of pixels		786,432 dots (1,024 x 768)	
Resolution		700 TV lines (DTV 720P input)	
RGB input signals	SXGA+/SXGA/WXGA/Mac 21" (in intelligent compression), XGA, SVGA, VGA, PC-98, VESA, Mac 19"/16"/13", 15-70 kHz (horizontal), 43-85 Hz* (vertical), 12-108 MHz (pixel clock) (plug & play VESA; DDC 1/2B)		
Video system	NTSC 3.58/NTSC 4.43/PAL/PAL (60 Hz)/PAL-M/PAL-N/SECAM/DTV (480I/480P/540P/576I/576P/720P/1035I/1080I)		
Lens	1:1.2 manual zoom and focus		
Projection size	40" (102 cm) to 500" (1,270 cm)		
Projection distance	40" (102 cm): 1.4-1.7 m, 100" (254 cm): 3.6-4.3 m, 500" (1,270 cm): 17.9-21.4 m		
Luminance	4,000 ANSI lumen (Eco/Quiet Mode off) / 3,200 ANSI lumen (Eco/Quiet Mode on)	3,500 ANSI lumen (Eco/Quiet Mode off) / 2,800 ANSI lumen (Eco/Quiet Mode on)	3,300 ANSI lumen (Eco/Quiet Mode off) / 2,640 ANSI lumen (Eco/Quiet Mode on)
Contrast ratio	450:1		600:1
Audio amplifier	2 W (mono)		
Speakers	3.6 cm (round) x 1		
Input terminals	Computer RGB/component x 2 (15-pin mini D-sub), DVI-DIGITAL x 1, audio x 2 (3.5-mm stereo mini jack), S-video x 1 (4-pin mini DIN), video x 1 (RCA), audio L/R mono mixing x 2 (RCA), USB x 1, RS-232C serial port x 1 (9-pin mini DIN), LAN x 1 (RJ-45), wired remote control x 1 (3.5-mm mini jack)		
Output terminals	Computer RGB/component x 1 (15-pin mini D-sub), audio L/R x 1 (3.5-mm stereo mini jack)		
Power source	AC 100-240 V, 50/60 Hz (Multi-Voltage)		
Power consumption	360 W (Eco/Quiet Mode off), 300 W (Eco/Quiet Mode on), 6 W (Standby) with AC 100 V 345 W (Eco/Quiet Mode off), 285 W (Eco/Quiet Mode on), 8 W (Standby) with AC 240 V		
Heat dissipation	1,350 BTU/hour (Eco/Quiet Mode off), 1,125 BTU/hour (Eco/Quiet Mode on) with AC 100 V 1,295 BTU/hour (Eco/Quiet Mode off), 1,070 BTU/hour (Eco/Quiet Mode on) with AC 240 V		
Fan noise	36 dB (Eco/Quiet Mode off), 31 dB (Eco/Quiet Mode on)		
Projection lamp	275 W AC		
Lamp life	2,000 hours (Eco/Quiet Mode off), 3,000 hours (Eco/Quiet Mode on)		
Dimensions (W x H x D)	326 x 101.5 x 279.5 mm (main body only) 328.5 x 126.5 x 292 mm (including adjustment foot and projecting parts)		
Weight	4.9 kg		
Supplied accessories	Remote control, Two R-6 batteries (AA size, UM/SUM-3, HP-7 or similar), RGB cable (3.0 m), Lens cap, Lens cap strap, Power cord (1.8 m), DIN-D-sub RS-232C adaptor (15 cm), Storage case, Operation manual		

\* Temporary noise may be visible with vertical frequencies above 100 Hz if OSD functions are activated. Design and specifications are current as of February 2007, but are subject to change without notice.

# SHARP

XG-C430X/XG-C335X/XG-C330X  
True XGA Portable LCD Projectors



High-Brightness, High-Quality Projectors Even in a Compact Body Provide Business Mobility As Well As Facilitate Network Control and Maintenance for Conference Rooms

**SHARP**  
SHARP CORPORATION OSAKA, JAPAN  
URL <http://www.sharp-world.com/>

**Notevision**



# High-Brightness, High-Quality Performance in a Compact and Lightweight Body with Ease of Operation, Maintenance and Network Controls

## High-Brightness Performance in Such a Compact Body

**4,000 ANSI Lumen High Brightness (XG-C430X)**  
**[XG-C335X: 3,500 ANSI Lumen, XG-C330X: 3,300 ANSI Lumen]**  
 Sharp's optoelectronics technology in a three-LCD projection system maximizes light output. This technology provides efficient 4,000 ANSI lumen brightness (XG-C430X), delivering a bright, easy-to-see image even in large, brightly lit rooms.



## Compact and Lightweight Body

Sharp's optical mechanism achieves an amazingly compact, lightweight body, which can be carried easily, while the recessed lens provides extensive protection against accidental damage.

## Useful Features

### Direct Power Off Function

The Direct Power Off function provides convenience for a variety of applications by keeping the cooling fan operating even after the power supply has been turned off. This lets users immediately unplug the projector and take it from the location because there is no need to wait for the projector to cool down. Along with Direct Power Off, the Direct Power On function also helps control the power simultaneously for multiple projectors by using the room's primary power switch.

### Eco Quiet Mode Direct Button

Eco Quiet Mode extends the LCD and lamp life and reduces fan noise. With the Direct Buttons built into both the projector and the remote control, this mode can be conveniently turned on or off at any time.

### 31dB Low Fan Noise (Eco Quiet Mode On)

Use of separate cooling systems for each RGB LCD panel achieves low fan noise.

## Easy Setting

### Auto Keystone Correction

Automatically adjusts projected images to compensate for distortion.

### New Tilt Leveler

Easily levels tilted images.



## Flexible Presentation

### Mouse Control

The computer mouse function enables a projector to be controlled remotely using a built-in USB terminal. In addition, by using an optional AN-MR2 remote IR receiver, a projector can be controlled even when mounted on a desktop or ceiling and regardless of USB cable length.



**Compact and Lightweight**

## Easy Operation and Installation

### Four Optional Lenses and Easy Replacement System

The projector may be used with four optional interchangeable lenses to meet a wide variety of applications and projection situations. The lenses cover projection distances from 9.11 ft (3.0 m) to 48.4 ft (14.7 m) for a 100" screen. And, it is amazingly easy to change lenses. Just detach the cover and turn the lever. Anytime you enter a new presentation venue, you can simply relax and quickly change to the lens which best suits your projection conditions such as the room size, projection distance and projected picture size.



### Side Access Lamp and Filter

The lamp and filter in the XG-C430X, XG-C335X and XG-C330X can be easily replaced while the projector is on a tabletop or when even ceiling mounted.



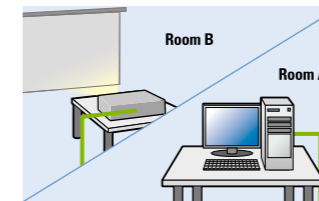
## SHARP Unique Network System

### Web Browser Control

Web browser control enables remote access and management of the projector by utilizing built-in firmware without the need for additional special software.

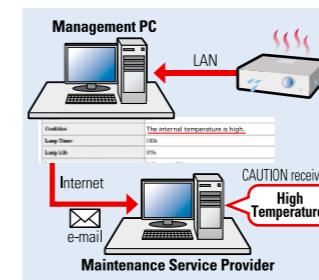
### Remote Access for Control and Adjustment

Projector control functions, including power on, input select, volume, and AV mute, can be controlled and adjusted by a computer even in another room.



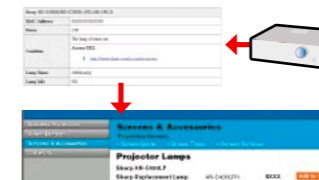
### Diagnosis and Auto Email Alert

Email is automatically sent to appointed addresses when detecting an error message, such as the lamp going out, unusual heating or cooling fan breakdown.



### Link to a Specific Website for Service and Support

The projector can be registered to a specific website for maintenance service and support. For example, the projector can send an error message, such as to notify that the lamp is burnt out, to a web address automatically selected. The address accessed for maintenance is also shown on the display.



## A Wide Variety of Interfaces

### Variety of Interfaces

With a DVI digital terminal compatible with conventional players and computers, the XG-C430X, XG-C335X and XG-C330X are equipped with various video inputs, including composite inputs and four discrete stereo audio inputs.



### Control with Downloadable Display Manager

A greater variety of network projector control options can be used when the Sharp Display Manager\* is installed on the main computer.

\* Sharp Display Manager can be downloaded from the Sharp Global Home Page for free.  
 Sharp Global Homepage URL: <http://sharp-world.com/projector>

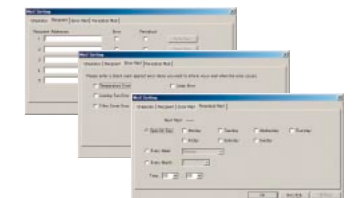
### Remote Access for Multiple and Group Projector Control

A management computer can control multiple projectors simultaneously.



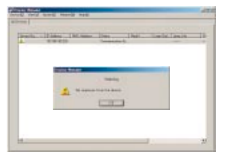
### Periodic/Error Diagnosis and Auto Email Alert

The Display Manager sends periodic reports and an error message as well as directly adjusts the projector gamma values and other projector conditions.



### Theft Detection and Message (Network Surveillance System)

A warning message will appear on the screen of a computer when projector cables are disconnected.



### PJLink™ Capability

The XG-C430X, XG-C335X and XG-C330X are compatible with devices that support PJLink™, enabling systems to be easily built for centralized management and operation using a controller. For additional information about the PJLink™, visit <http://pjlink.jbma.or.jp/english/>

### Control System Compatibility

The XG-C430X, XG-C335X and XG-C330X provide superior compatibility with various control systems such as Crestron, AMX and Extron.



## Security and Safety (Notevision Security Pack)

### Notevision Lockdown Function

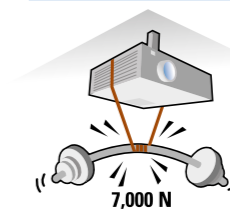
The optical unit provides a solid mounting point for ceiling mount hardware, and the joint area is reinforced by a metal plate. A strong mount deters theft.

### When a projector is subjected to a force of 7,000 N (714 kgf)



The conventional model is damaged.

The XG-C430X, XG-C335X and XG-C330X remain undamaged.



- System Lock Function with Key Code Startup
- Network Surveillance System
- Kensington Lock