

Home theatre looks better than ever, thanks to Yamaha Natural Black, high contrast, HD compatibility, full 10-bit processing, HDMI compatibility and more.



Superior Picture Quality

- Yamaha Natural Black
- 4,000:1 contrast ratio
- Newest 0.65" WXGA (1,280 x 768 pixels) DLP™ device and imaging driver for superb resolution
- Full 10-bit processing
- BrilliantColor™ technology

Superior Operation

- Motorized iris control
- Image customization
- Low light leakage
- Quiet operation
- Custom installation facilities
- HDMI compatibility



Digital Cinema Projector

DPX-830



You'll be so amazed with the colour and clarity,
you'll want to watch all your favourite movies again!

Superior Picture Quality

- Yamaha Natural Black
- 4,000:1 contrast ratio
- Newest 0.65" WXGA (1,280 x 768 pixels) DLP™ device and imaging driver for superb resolution
- Full 10-bit processing
- BrilliantColor™ technology

Superior Operation

- Motorized iris control
- Image customization
- Low light leakage
- Quiet operation
- Custom installation facilities
- HDMI compatibility



Yamaha Natural Black

Yamaha's Natural Black concept utilizes innovative technologies and components that provide deeper levels of black than most other projectors. Shadows stand out from the background, black areas are solid even in dark scenes, and blacks maintain their depth when the scene becomes brighter.



Yamaha Natural Black Conventional home projector

High Performance DLP™ Device

The DPX-830 incorporates a 0.65" WXGA DLP device that enables it to deliver 1,280 x 768 resolution. All types of sources, including HD video, are reproduced with extreme accuracy and outstanding clarity.



Motorized Iris Control

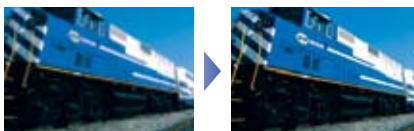
An electrically powered iris, operated via the remote control, lets you optimize brightness and contrast at the push of a button, depending on the brightness of the room.

Smooth Gradation Reproduction Thanks to Full 10-Bit Processing

With the use Texas Instruments' new DDP3020 Imaging ASIC for full 10-bit processing, a new colour wheel with improved red range in order to represent deep reds, and 12-bit floating-point digital gamma correction, the DPX-830 achieves smooth, rich intermediate gradation reproduction. The full 10-bit



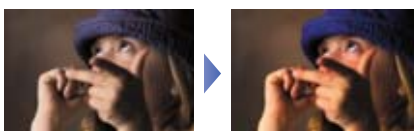
deinterlacer and scaler help deliver beautiful images with lower jaggies and noise.



Full 10-bit deinterlacing and up-scaling

BrilliantColor™ Technology

The new colour process from Texas Instruments called BrilliantColor™ Technology processes colour signals at the system level to improve brightness and saturation. It ensures bright and vivid images, especially those with intermediate colours.



Low Light Leakage, Quiet Operation

The body is designed to prevent light leakage to the front, and operation is extremely quiet. Viewers can enjoy movies and other entertainment with no distractions.



Image Customization

In addition to selecting three preset Gamma modes, users can perform Gamma correction in the High, Mid and Low ranges for best reproduction of blacks, shadows and dark scenes, and store two custom settings. Other customization functions include colour temperature, which allows fine adjustment of red, green and blue values for both contrast and brightness. Three image quality settings can be stored for each input source.

Flexible Installation

A Vertical Location function uses digital processing to move the image up or down. Vertical and horizontal keystone correction is also provided. A trigger terminal outputs a signal that will power an electrically operated screen and an RS-232C terminal allows external control.

HDMI Interface

An HDMI interface connects the projector to a DVD player or other digital equipment. This high quality digital connection ensures minimal signal degradation.



Other Notable Features

- Black mask
- Sync noise mask
- Overscan (90—100%)
- Film detection
- Remote unit with illuminated buttons
- Accepts ø67 camera filter
- GUI with choice of 10 languages

Accessories

- PMT-H75: Optional installation brackets for high ceiling (Lens centre: 570—870 mm)
- PMT-L71: Optional installation brackets for low ceiling (Lens centre: 190 mm)
- PJL-725: Optional lamp cartridge



With the PMT-H75, the cable can be hidden inside the bracket.

DPX-830 Main Specifications

Projection System	DLP™ Technology device type size: 0.65 inch DMD™
Resolution	1,024 x 768 pixels
Brightness	1,000 ANSI lumens (maximum)
Contrast Ratio	4,000:1 (maximum)
Projection Distance	3.6—4.4 m (100" 16:9 screen)
Screen Size	40" min.—275" max. (projection distance: 1.3—10 m)
Lamp	200 W
Operating Noise	26 dB (lamp: Cinema mode)
Colour Format	NTSC, PAL, SECAM, NTSC4.43, PAL-M, PAL-N, PAL60
Video Compatibility	480i, 576i, 480p, 576p, 720p (50/60Hz), 1080i (50/60 Hz)
Power Consumption	280 W, standby 8 W
Dimensions (W x H x D)	360 x 102 x 290 mm 14-3/16" x 4" x 11-7/16"
Weight	3.9 kg; 8.6 lbs.



DPX-830 Extensive Connections

In addition to a component video, the DPX-830 rear panel offers a composite video, S-Video, analogue RGB, HDMI, and a trigger and RS-232C terminals.

• Digital Light Processing, DLP, Digital Micromirror Device, DMD and BrilliantColor are trademarks of Texas Instruments, Inc. • HDMI, the HDMI logo and High-Definition Multimedia Interface are trademarks or registered trademarks of HDMI Licensing LLC. • Product designs and specifications are subject to change without notice.

For details please contact:

Visit us at our website:
<http://www.global.yamaha.com>



CREATING 'KANDO' TOGETHER

YAMAHA CORPORATION
P.O. Box 1, Hamamatsu, Japan



P10017750