



Designed to facilitate ceiling mounting in mid to large-size spaces.

Convenient Ceiling Mounting: Superior Maintainability and Networking

■ Superior Features for Easy Maintenance

Thanks to the Hybrid Filter, maintenance and cleaning are much less frequent, making longer operation possible. With the lamp door on the top and the filter cover on the side, maintenance and replacement of these parts can be done easily even when the projector is mounted.

Lamp door on top allows easy replacement when the projector is mounted on the ceiling.



With the New Hybrid Filter, filter maintenance frequency has been improved from every 400 hours to every 2,000 hours.

■ Manual Lens Shift

The lens can be adjusted manually to shift the position of the image. It can be moved 9cm (3-9/16") to the left and right, and 50cm (19-11/16") up and down on a 70" screen. After ceiling mounting, fine adjustments can be done with a screwdriver.

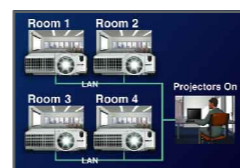


■ Inorganic Optics

The CP-X809 uses inorganic LCD panels, which feature a higher resistance to light. This translates into longer operational life for the projector, and better picture quality during the life of the projector.

■ Projector Monitoring and Control from a Remote Location

Hitachi's Projector Management Software* (PJMan) gives you the ability to control, diagnose and manage a single or group of Hitachi projectors.



■ "MY IMAGE"- Image Transfer, Storage and Recall over LAN

Images can be transferred* over a LAN to individual or multiple projectors. These images are stored in the projector's memory and can be displayed using the "MY IMAGE" feature of the projector. "MY IMAGE" can be recalled/displayed locally using the projector's remote control or remotely over the LAN.



"MY IMAGE" is ideal for:

- Sending presentation images ahead to the projector (so you can leave your computer behind).
- Sending and displaying important announcements and notifications on multiple projectors across a campus.

■ E-mail Alerts

E-mail notification is sent for routine maintenance and error conditions.



■ Scheduling Functions

You can schedule routine and special projector events, including power on, power off, input selection and other settings.



Excellent Performance: High Quality Presentation Capabilities

■ Wireless Multi-User Presentations

Make the most of your meetings by:

- Wireless Presentation capabilities (no need to pass around a connection cable).
- Displaying up to four individual computer presentations at the same time.

Individual user names can be displayed for the connected computers, making it easy to keep track of the displayed presentations.



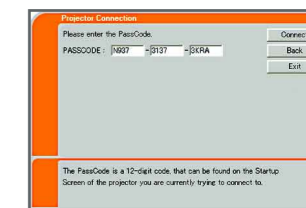
Cable connection unnecessary.



Four images on one screen.

■ Quick and Easy Network Presentations

Hitachi's new MIU LiveViewer software* provides a quick and easy connection wizard for setting up a wired or wireless network presentation. Just input the Pass Code shown on the screen for convenient network presentations via wired or wireless connection.



- Wireless connection for CP-X809 via optional SD wireless card.

■ Presenter Mode

When multiple computers have access to the projector via the network, a designated user can control presentation privileges (and block unwanted access), ensuring that the current presentation is not interrupted unexpectedly.

* Requires additional PC software. Download available directly from Hitachi Web site. Please refer to your owner's manual or Hitachi re-seller for additional details.

Easy Use Without Worry: Higher Security and Easier Operation

■ Improved Security Bar Prevents Theft

This projector has an improved Security Bar that provides a deeper space for heavy chains. It also has a Kensington security slot for using a lock to attach a cable. These security functions prevent theft when the projector is mounted on a ceiling or used on a cart-top.



■ Template Function

When projecting onto a whiteboard or blackboard this feature projects lines, making writing on the board easier. Various types of line patterns can be selected.



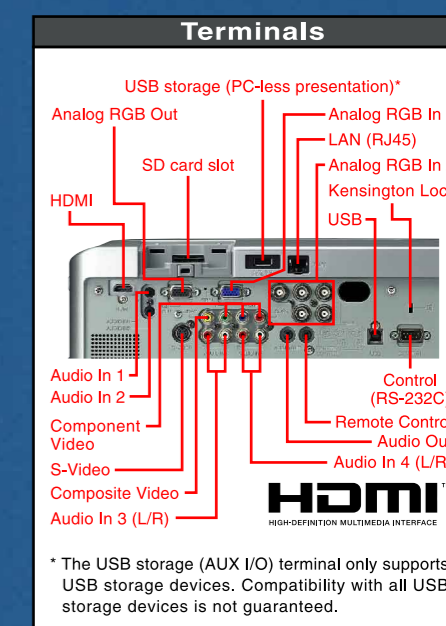
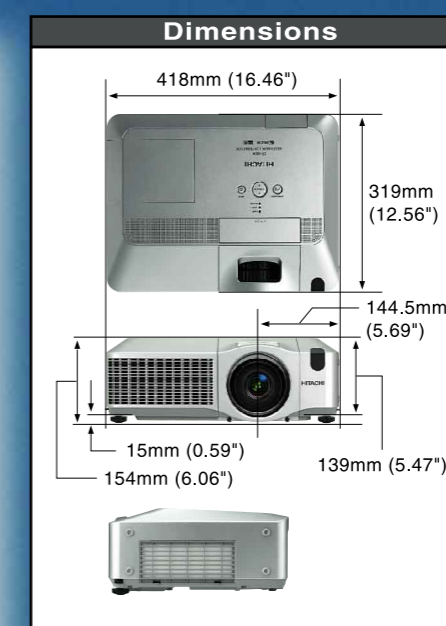
■ Transition Detector Prevents Unauthorized Use

Even if someone takes the projector without authorization, they cannot use it.



■ Other Features

- SRS WOW* Technology and 4W x 4 Audio Output • Low Noise of 29dBA (Whisper Mode) • Closed Caption Function • PC-less Presentations Using Various Media
- Data Storage via a Network • Automatic Time Adjustment • Control Monitoring via Web Browser • Active Iris • Motion Adaptive Progressive Scan • 3:2 Pull Down • Noise Reduction • Equalizing Gamma Function
- 3D Y/C Separation • PIN Lock and My Screen PIN Lock • My Text • Auto Vertical Keystone Correction • 4-Second Quick Start • My Button and My Source/Doc. Camera Button • Direct Power On/Off
- Blackboard or Whiteboard Modes
- Daytime Mode • Input Source Naming
- Resolution Preset and Custom Modes
- IR Remote Frequency Change
- Serial No. Label on Side
- **SRS** is a trademark of SRS Labs, Inc.
- Thanks to SRS WOW, the sound is both dynamic and clear.



* The USB storage (AUX I/O) terminal only supports USB storage devices. Compatibility with all USB storage devices is not guaranteed.

* Requires additional PC software. Download available directly from Hitachi Web site. Please refer to your owner's manual or Hitachi re-seller for additional details.