

LCD Projector

MP-JU4001

MP-JW4001/MP-JW4011

MP-JW3501/MP-JW3511

User's Manual (concise)

Thank you for purchasing this product.

This is the basic manual on the product. Visit our website to get the detailed manuals (Safety Guide, Operating Guide, Network Guide) and the latest information on the product.

Check them before using the product, for safe use and utilization of the product.

For our website, see the attached sheet.

⚠WARNING

- ▶ Before using this product be sure to read all manuals for this product. After reading them, store them in a safe place for future reference.
- ▶ Heed all the warnings and cautions in the manuals or on the product.
- ▶ Follow all the instructions in the manuals or on the product.

NOTE • In this manual, unless any comments are accompanied, “the manuals” means all the documents provided with this product, and “the product” means this projector and all the accessories came with the projector.

Contents

First of all.....2	Adjusting the projector's elevator14
Graphical symbols explanation2	Displaying the picture15
Important safety instructions2	Turning off the power.....16
Electro-magnetic interference4	Cleaning and replacing the air filter.....17
Laser warning.....5	Specifications19
Disposal of old equipment and batteries only for European Union and countries with recycling systems6	End user license agreement for the product software21
Contents of package.....7	Troubleshooting - Warranty and after-service22
Preparing for the remote control.....8	
Arrangement.....9	
Connecting with your devices.....10	
Connecting to a power supply12	
Turning on the power.....13	

First of all

Graphical symbols explanation

The following entries and graphical symbols are used for the manuals and the product as follows, for safety purpose. Know their meanings beforehand and heed them.

⚠WARNING This entry warns of a risk of serious personal injury or even death.

⚠CAUTION This entry warns of a risk of personal injury or physical damage.

NOTICE This entry notices of fear of causing trouble.



WARNING/
CAUTION



High
pressure



High voltage



High
temperature



Do not shade the light



Projector not for consumer use



Laser warning



RG2 caution



Kensington lock



Alternating
current



Standby
(Power)



On (Power)



Video input
switching

Important safety instructions

The followings are important instructions for safely using this product. Be sure to follow them always when handling the product. The manufacturer assumes no responsibility for any damage caused by mishandling that is beyond normal usage defined in these manuals of this projector.

⚠WARNING

- ▶ Never use the product in or after an abnormality (for example, giving off smoke, smelling strange, finding a foreign object inside, broken, and so on.) If an abnormality should occur, unplug the projector urgently.
- ▶ Situate the product away from children and pets.
- ▶ Keep small parts away from children and pets. If swallowed, consult a physician immediately for emergency treatment.
- ▶ Do not use the product during electrical storms.
- ▶ Unplug the projector from the power outlet if the projector is not being used.
- ▶ Do not open or remove any portion of the product, unless the manuals direct it. For internal maintenance, leave it to your dealer or their service personnel.

(continued on next page)

⚠WARNING

- ▶ Use only the accessories specified or recommended by the manufacturer.
- ▶ Do not modify the projector or accessories.
- ▶ Do not let any things or any liquids enter to the inside of the product.
- ▶ Do not get the product wet.
- ▶ Do not place the projector in the following place where oils or chemicals are used:
 - near the kitchen which oil smoke comes from
 - oils such as machine oils or aromatic oils are used
 - smoke or bubbles for a show or a performance are used
 - solvents, medicines, or detergent volatiles or adhesives
 - corrosive gas is generatedDo not use adhesive such as threadlocker, lubricant and so on.
- Oils adhere to the product due to oil smoke, resulting in fire, electrical shock, or malfunction.
- Degradation of plastic harms the product, resulting in injury, fire, electrical shock, or malfunction due to falling from the ceiling, wall, or high mounted position.
- ▶ Do not apply a shock or pressure to this product.
 - Do not place the product on an unstable place such as the uneven surface or the leaned table.
 - Ensure the product is stable. Place the projector so that it does not protrude from the surface where the projector is placed on.
 - Remove all the attachments including the power cord and cables, from the projector when carrying the projector.
- ▶ Do not look into the lens and the openings on the projector while the light source is on, since the projection ray may cause a trouble on your eyes.
- ▶ Do not approach the exhaust vents, while the light source is on. Also after the light source goes out, do not approach them for a while, since too hot.

Electro-magnetic interference

In CANADA

CAN ICES-3(B) / NMB-3(B).

In the US, and other places where the FCC regulations are applicable

This device complies with part 15 of the FCC Rules. Operation is subject to the following two conditions: (1) This device may not cause harmful interference, and (2) this device must accept any interference received, including interference that may cause undesired operation. This equipment has been tested and found to comply with the limits for a Class B digital device, pursuant to Part 15 of the FCC Rules.

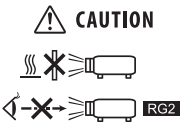
These limits are designed to provide reasonable protection against harmful interference in a residential installation. This equipment generates, uses, and can radiate radio frequency energy and, if not installed and used in accordance with the instructions, may cause harmful interference to radio communications. However, there is no guarantee that interference will not occur in a particular installation. If this equipment does cause harmful interference to radio or television reception, which can be determined by turning the equipment off and on, the user is encouraged to try to correct the interference by one or more of the following measures:

- Reorient or relocate the receiving antenna.
- Increase the separation between the equipment and receiver.
- Connect the equipment into an outlet on a circuit different from that to which the receiver is connected.
- Consult the dealer or an experienced radio/TV technician for help.

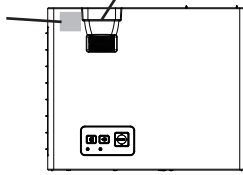
INSTRUCTIONS TO USERS: This equipment complies with the requirements of FCC (Federal Communication Commission) equipment provided that the following conditions are met. Some cables have to be used with the core set. Use the accessory cable or a designated-type cable for the connection. For cables that have a core only at one end, connect the core to the projector.

CAUTION: Changes or modifications not expressly approved by the party responsible for compliance could void the user's authority to operate the equipment.

Laser warning

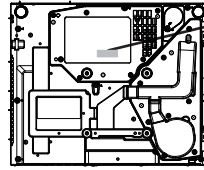


Laser aperture



Top view

Product Label: The position of the label is shown in the drawing below.



Bottom view

CLASS 1 LASER PRODUCT
PRODUIT LASER DE CLASSE 1
LASERPRODUKT DER KLASSE 1
1類雷射產品 IEC/EN 60825-1:2014

ENGLISH

As with any bright source, do not stare into the direct beam, RG2 IEC 62471-5:2015

Laser evaluation standard

IEC60825-1: 2014, EN60825-1: 2014

Internal Laser Specifications

Max. Output: 74W

Wave Length: 449 - 461nm

- This projector is classified as a class 1 laser product that complies with IEC60825-1:2014 and JIS C 6802:2014.

Improper handling may cause injury. Be careful of the following.

- If an abnormality occurs in the projector, turn it off immediately, unplug the power cord from the outlet, and consult your dealer or service company. If you continue to use it, it may cause not only electric shock or fire but also vision disorder.
- Do not disassemble or modify the projector. The projector has a high-power laser device inside. It may cause serious injury.
- Do not look into the beam while projecting an image. Do not look into the lens through optical devices such as magnifiers or telescopes. It may cause vision disorder.
- Make sure that nobody is looking into the lens when you turn on the projector by remote control away from the projector.
- Do not let children operate the projector. If children could possibly operate the projector, they must be accompanied by an adult.
- Do not expose optical devices such as magnifiers or reflection mirrors to a projected image. It may cause bad effects on the human body if you continue to use it. It may also cause fire or accidents.
- Do not disassemble the projector when you dispose of it. Dispose of it according to laws and regulations of each country or region.

⚠CAUTION

- ▶ Use of controls or adjustments or performance of procedures other than those specified herein may result in hazardous radiation exposure.

Disposal of old equipment and batteries only for European Union and countries with recycling systems



The above mark is in compliance with the Waste Electrical and Electronic Equipment Directive 2012/19/EU (WEEE). The mark indicates the requirement NOT to dispose the equipment including any spent or discarded batteries as unsorted municipal waste, but use the return and collection systems available. If the batteries or accumulators included with this equipment display the chemical symbol Hg, Cd, or Pb, then it means that the battery has a heavy metal content of more than 0.0005% Mercury, or more than 0.002% Cadmium or more than, 0.004% Lead.

Note for the battery symbol (bottom symbol): This symbol might be used in combination with a chemical symbol. In this case it complies with the requirement set by the Directive for the chemical involved.



In the US

- Supervise children in order for them not to stare into the projection beam from any distance.
- Use caution when using the remote control for turning on the projector while someone is in front of the projection lens.
- The user should avoid the use of optical aids such as binoculars or telescopes inside the beam.

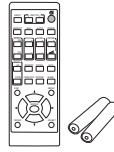
Contents of package

Your projector should come with the items shown below. Check that all the items are included. Contact your dealer immediately if any items are missing.

- (1) Remote control with two AA batteries
- (2) Power cord (x1)
- (3) Computer cable
- (4) Lens cover
- (5) User's manual

* This is the basic manual on the product.
Visit our website to get the detailed manuals
and the latest information on the product.

(1)



(4)



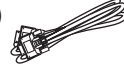
(2)



(5)



(3)



⚠WARNING

► Keep small parts away from children and pets. Take care not to put in the mouth. If swallowed, consult a physician immediately for emergency treatment.

NOTE • Keep the original packing materials for future reshipment. Be sure to use the original packing materials when moving the projector. Use special caution for the lens.

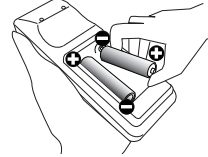
Preparing for the remote control

Insert the batteries into the remote control before using it.

Use the appropriate AA carbon-zinc or alkaline batteries (non-rechargeable) in accordance with laws and regulations.

If the remote control starts to malfunction, try to replace the batteries. If you will not use the remote control for long period, remove the batteries from the remote control and store them in a safe place.

1. Remove the battery cover.
2. Align and insert the two AA batteries according to their plus and minus terminals as indicated in the remote control.
3. Put the battery cover back to the former state.



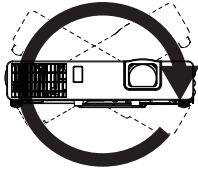
⚠WARNING

- ▶ Always handle the batteries with care and use them only as directed. Improper use may result in battery explosion, cracking or leakage, which could result in fire, injury and/or pollution of the surrounding environment.
 - When replacing the batteries, replace both of the batteries with new batteries of the same type. Do not use a new battery with a used battery.
 - Be sure to use only the batteries specified. Do not use batteries of different types at the same time. Do not mix a new battery with used one.
 - Make sure the plus and minus terminals are correctly aligned when loading a battery.
 - Keep a battery away from children and pets.
 - Do not recharge, short circuit, solder or disassemble a battery.
 - Do not place a battery in fire or water. Keep batteries in a dark, cool and dry place.
 - If you observe battery leakage, wipe out the leakage and then replace a battery. If the leakage adheres to your body or clothes, rinse well with water immediately.
 - Obey the local laws on disposing the battery.

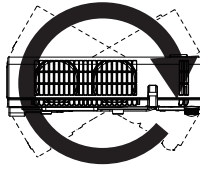
Arrangement

Refer to the table T-1 to T-3 in Supplement (at the end of this manual) to determine the screen size and projection distance. The values shown in the table are calculated for a full size screen. The values may be different slightly.

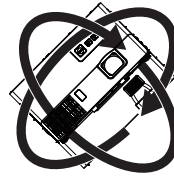
This projector will perform in a free tilt angle, as shown in the figures below.



Horizontal 360°

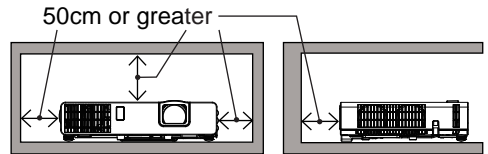


Vertical 360°



Tilt 360°
(combination of
horizontal
and vertical)

Install the projector away from walls or other objects in a well-ventilated place. Refer to the figures.



Installation position, picture mode, altitude, and operating environment may affect the brightness of the display.

⚠WARNING

- ▶ Install the projector where you can access the power outlet easily.
- ▶ Install the projector in a stable position.
 - Do not use any mounting accessories except the accessories specified by the manufacturer. Read and keep the manuals of the accessories used.
 - For special installation such as ceiling mounting, be sure to consult your dealer beforehand. Specific mounting accessories and services may be required.
 - Do not put the projector on its side, front or rear position. If the projector falls or is knocked over, it could cause injury and/or damage to the projector.
 - Do not attach nor place anything on the projector unless otherwise specified in the manual.
- ▶ Do not install the projector near thermally conductive or flammable things.
- ▶ Do not place the projector where any oils, such as cooking or machine oil, are used.
- ▶ Do not place the product in a place where it may get wet.

(continued on next page)

⚠CAUTION

- ▶ Place the projector in a cool place with sufficient ventilation.
 - Install the projector away from walls or other objects in a well-ventilated place.
 - Do not stop up, block nor cover the projector's vent holes.
 - Do not place the projector on carpet, cushions or bedding.
 - Do not place the product at places that are exposed to magnetic fields, doing so can cause the cooling fans inside the projector to malfunction.
 - When you use the projector with the air filter facing towards the ceiling, it is clogged more frequently. Clean the air filter periodically.
- ▶ Do not place the product in smoky, humid or dusty place.
(e.g. smoking area, kitchen, beach and near humidifiers.)

NOTICE

- ▶ Position the product to prevent light from directly hitting the projector's remote sensor.
- ▶ Positional deviation or distortion of a projected image, or shift of the focus may occur due to ambient conditions, and so on. They tend to occur until the operation becomes stable, especially within about 30 minutes after the light source is turned on. Check and readjust them as necessary.
- ▶ Do not place the product in a place where radio interference may be caused. For details, see the Operating Guide. (📖 1)

Connecting with your devices

Before connecting the projector to a device, consult the manual of the device to confirm that the device is suitable for connecting with this product and prepare the required accessories, such as a cable in accord with the signal of the device. Consult your dealer when the required accessory did not come with the product or the accessory is damaged.

After making sure that the projector and the devices are turned off, perform the connection, according to the following instructions. Refer to figures F-1 to F-5 in Supplement (the end of this manual).

For details, see the Operating Guide. (📖 1) Before connecting the projector to a network system, be sure to read the Network Guide. (📖 1)

(continued on next page)

⚠WARNING

- ▶ Use only the appropriate accessories. Otherwise it could cause a fire or damage the projector and devices.
 - Use only the accessories specified or recommended by the projector's manufacturer. It may be regulated under some standards.
 - Neither disassemble nor modify the projector and the accessories.
 - Do not use the damaged accessory. Be careful not to damage the accessories. Route a cable so that it is neither stepped on nor pinched.

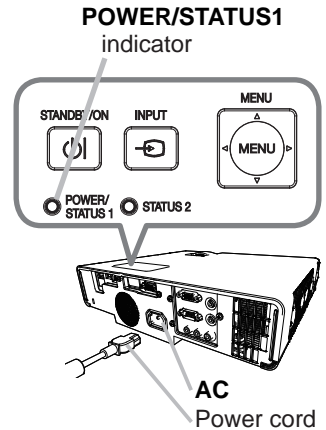
⚠CAUTION

- ▶ For a cable with a core at only one end, connect the end with the core to the projector. That may be required by EMI regulations.
- ▶ Before connecting the projector to a network system, be sure to obtain the consent of the administrator of the network.
- ▶ Do not connect the **LAN** port to any network that might have the excessive voltage.
- ▶ The designated USB wireless adapter that is sold as an option is required to use the wireless network function of this projector.
- ▶ Before you insert or pull out the USB wireless adapter from the projector, turn off the power of the projector and pull out the power cord's plug from the outlet. Do not touch the USB wireless adapter while the projector is receiving AC power.

- NOTE
- Do not turn on or off the projector while connected to a device in operation, unless that is directed in the manual of the device.
 - Some input ports are selectable in the use. For details, see the Operating Guide. (📖 1)
 - Be careful not to mistakenly connect a connector to a wrong port.

Connecting to a power supply

1. Put the connector of the power cord into the **AC** (AC inlet) of the product.
2. Firmly plug the power cord's plug into the outlet. In a couple of seconds after the power supply connection, the **POWER/STATUS1** indicator lights up in steady orange.
When the **DIRECT POWER ON** function is activated, the connection of the power supply make the projector turn on.
When the **AUTO POWER ON** function is activated and the projector is receiving an input signal, it is turned on by connecting to the power supply.



⚠WARNING

- ▶ Use extra caution when connecting the power cord, as incorrect or faulty connections may result in fire and/or electrical shock.
 - Do not touch the power cord with a wet hand.
 - Only use the power cord that came with the projector. If it is damaged, consult your dealer to get a new one. Never modify the power cord.
 - Only plug the power cord into an outlet whose voltage is matched to the power cord. The power outlet should be close to the projector and easily accessible. Remove the power cord for complete separation.
 - Do not distribute the power supply to multiple devices. Doing so may overload the outlet and connectors, loosen the connection, or result in fire, electric shock or other accidents.
 - Connect the ground terminal for the AC inlet of this unit to the ground terminal of the building using an appropriate power cord (bundled).

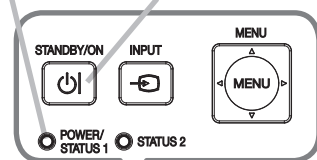
NOTICE

- ▶ This product is also designed for IT power systems with a phase-to-phase voltage of 220 to 240 V.

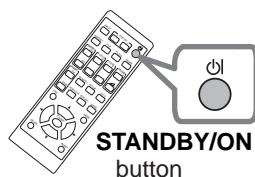
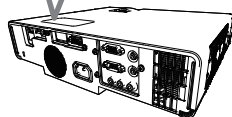
Turning on the power

1. Make sure that the power cord is firmly and correctly connected to the projector and the outlet.
2. Make sure that the **POWER/STATUS1** indicator is steady orange. Then remove the lens cover.
3. Press the **STANDBY/ON** button on the projector or the remote control.

POWER/STATUS1 indicator
STANDBY/ON button



ENGLISH



The projection light source will light up, and the **POWER/STATUS1** indicator will begin blinking in green.

When the power is completely on, the indicator stops blinking and light in steady green.

⚠WARNING

- ▶ A strong light is emitted when the projector's power is on. Do not look into the lens of the projector or look inside of the projector through any of the projector's openings, since the projection ray may cause a trouble on your eyes.

NOTE

- Power on the projector prior to any connected devices.
- The projector has the DIRECT POWER ON function, which makes the projector automatically turn on. For more information, see the Operating Guide. (1)

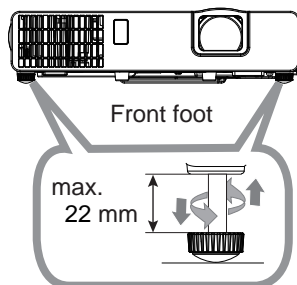
Adjusting the projector's elevator

Lengthening or shortening the each elevator foot shifts the projection position and the projection angle.

Turn the elevator foot to adjust its length.

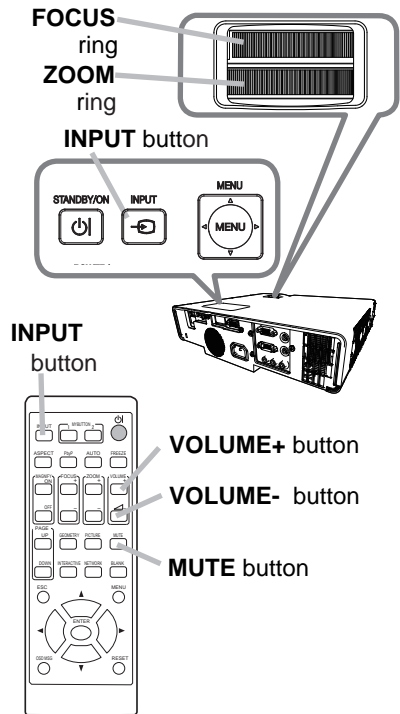
⚠WARNING

- ▶ Do not lengthen the elevator foot exceeding 22 mm. The foot lengthened exceeding the limit may come off and drop the projector down, and result in an injury or damaging the projector.



Displaying the picture

1. Activate your signal source. Turn the signal source on, and make it send the signal to the projector.
2. Use the **VOLUME + / VOLUME -** buttons to adjust the volume. To turn off the sound, press the **MUTE** button on the remote control.
3. Press the **INPUT** button on the projector or the remote control. Select a desirable input referring to the displayed input list.
4. Press the **ASPECT** button on the remote control. Each time you press the button, the projector switches the mode for aspect ratio in turn.
5. Use the **ZOOM** ring to adjust the screen size.
6. Use the **FOCUS** ring to focus the picture.



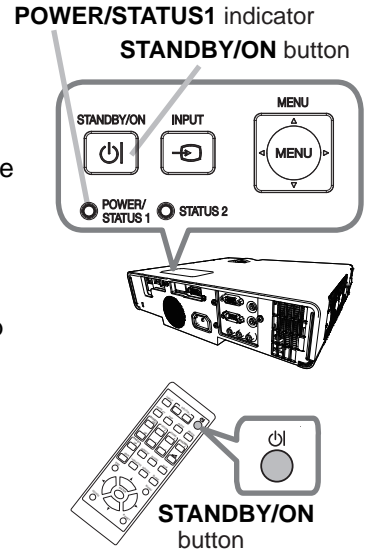
⚠WARNING

► If you wish to have a blank screen while the light source is on, use the **BLANK** function (see the Operating Guide (📖 1)). Taking any other action may cause the damage on the projector. Blocking the beam by something causes high temperature and could result in fire or smoke.

- NOTE
- The **ASPECT** button does not work when no proper signal is inputted.
 - There may be some noise and/or the screen may flicker for a moment when an operation is made. This is not a malfunction.
 - For the details of how to adjust the picture, see Operating Guide. (📖 1)

Turning off the power

1. Press the **STANDBY/ON** button on the projector or the remote control.
The message “Power off?” appears on the screen for about 5 seconds.
2. Press the **STANDBY/ON** button again while the message appears.
The light source will go off, and the **POWER/STATUS1** indicator will begin blinking in orange.
Then the **POWER/STATUS1** indicator will stop blinking and light in steady orange when the light source cooling is completed.
3. Attach the lens cover, after the **POWER/STATUS1** indicator turns to steady orange.



⚠WARNING

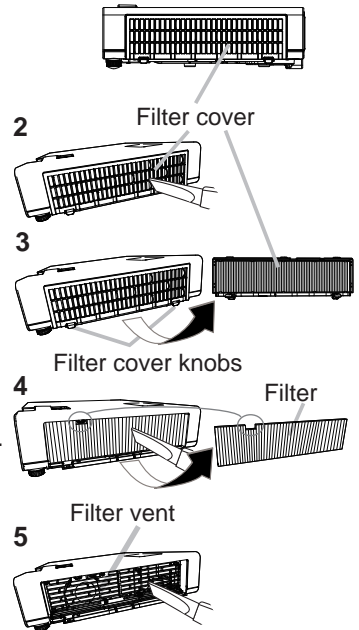
- ▶ Do not touch around the exhaust vents during use or just after use, since it is too hot.
- ▶ Remove the power cord for complete separation. The power outlet should be close to the projector and easily accessible.

NOTE • Power off the projector after any connected devices are powered off.
• This projector has the AUTO POWER OFF function that can make the projector turn off automatically. For more information, see the Operating Guide. (📖 1)

Cleaning and replacing the air filter

Check and clean the air filter periodically. When the indicators or a message prompts you to clean the air filter, comply with it as soon as possible. The filter unit is attached to inner side of the filter cover. If a filter of the filter unit is damaged or heavily soiled, replace the whole unit with a new one.

1. Turn the projector off, and unplug the power cord. Allow the projector to sufficiently cool down.
2. Use a vacuum cleaner on and around the filter cover.
3. Pick and pull up the filter cover knobs to take it off.
4. Use a vacuum cleaner for the filter, take the filter off.
5. Use a vacuum cleaner for the filter vent of the projector.
6. Use a vacuum cleaner for each part of the filter. If any part of the filter is damaged or heavily soiled, replace the whole unit with a new one. To purchase the new filter unit, inform your dealer of the type number as follows.
UX44211
7. Put the filter back in an upright state into the projector.
8. Put the filter cover back into the place.
9. Turn the projector on and reset the filter time using the FILTER TIME item in the EASY MENU.
 - (1) Press the **MENU** button to display a menu.
 - (2) Point at the FILTER TIME using the ▲/▼ buttons, then press the ► button. A dialog will appear.
 - (3) Press the ► button to select "OK" on the dialog. It performs resetting the filter time.



(continued on next page)

⚠WARNING

- ▶ Before taking care of the air filter, make sure the power cord is not plugged in, then allow the projector to cool sufficiently.
- ▶ Use only the air filter of the specified type. Do not use the projector without the air filter or the filter cover. It could result in a fire or malfunction to the projector.
- ▶ Clean the air filter periodically. If the air filter becomes clogged by dust and so on, internal temperatures rise and could cause a fire, a burn or malfunction to the projector.

NOTE

- Reset the filter time only when you have cleaned or replaced the air filter, for a suitable indication about the air filter.
- The projector may display the message such as the "CHECK THE AIR FLOW" or turn off the projector, to prevent the internal heat level rising.

Specifications

Item	Specification
Product name	Liquid crystal projector
Liquid Crystal Panel	MP-JU4001: 2,304,000 pixels (1920 horizontal x 1200 vertical) MP-JW3501/MP-JW3511/MP-JW4001/MP-JW4011: 1,024,000 pixels (1280 horizontal x 800 vertical)
Light source	Laser diode
Speaker	16 W mono
Power supply/ Rated current	MP-JU4001: 2.9A (AC 100V-120V), 1.4A (AC 220V-240V) MP-JW4001/MP-JW4011: 2.8A (AC 100V-120V), 1.4A (AC 220V-240V) MP-JW3501/MP-JW3511: 2.5A (AC 100V-120V), 1.3A (AC 220V-240V)
Power consumption	MP-JU4001: 280W (AC 100V-120V), 270W (AC 220V-240V) MP-JW4001/MP-JW4011: 270W (AC 100V-120V), 260W (AC 220V-240V) MP-JW3501/MP-JW3511: 240W (AC 100V-120V), 230W (AC 220V-240V)
Temperature range	0 ~ 40 °C * Operating 35 ~ 40°C * The brightness of the light source is reduced automatically.
Size	336 (W) x 87 (H) x 276 (D) mm 330 (W) x 69 (H) x 271 (D) mm (Not including protruding parts.) Refer to figure F-6 in Supplement (the end of this manual).
Weight (mass)	MP-JU4001/MP-JW4011/MP-JW3511: approx. 3.6 kg MP-JW4001/MP-JW3501: approx. 3.5kg

(continued on next page)

Specifications (continued)

Item	Specification
Ports	<p>COMPUTER IN 1 D-sub 15 pin mini jack x1</p> <p>HDMI 1 HDMI connector x1</p> <p>HDMI 2 HDMI connector x1</p> <p>COMPUTER IN 2/MONITOR OUT D-sub 15 pin mini jack x1</p> <p>VIDEO RCA jack x1</p> <p>AUDIO IN1 3.5 mm (stereo) mini jack x1</p> <p>AUDIO IN2 (L, R) RCA jack x2</p> <p>AUDIO OUT 3.5 mm (stereo) mini jack x1</p> <p>USB TYPE A USB-A x1</p> <p>USB TYPE B USB-B x1</p> <p>CONTROL D-sub 9 pin plug x1</p> <p>LAN RJ45 jack x1</p> <p>* Refer to figure F-1 in Supplement (the end of this manual).</p>
Optional parts	<p>Filter unit: UX44211</p> <p>Mounting accessory:</p> <p>HAS-E100 (Bracket for ceiling mount)</p> <p>HAS-104S (Bracket for low ceiling mount)</p> <p>HAS-204L (Fixing adapter for low ceilings)</p> <p>HAS-304H (Fixing adapter for high ceilings)</p> <p>Wireless adapter: USB-WL-5G</p> <p>* For more information, check our website. (📖 1)</p>

Manufacturing year and month

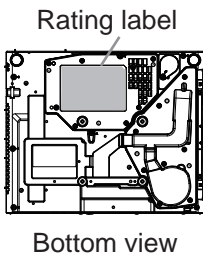
The manufacturing year and month of this projector is indicated as follows in the serial number of the rating label on the projector.

Example:

F 0 C x 0 0 0 0 1

- └─ Manufacturing month: A = January, B = February, ... L = December.
- └─ Manufacturing year: 0 = 2020, 1 = 2021, 2 = 2022, ...

Country of manufacture: China



End user license agreement for the product software

Software in the product consists of the plural number of independent software modules and there exist our copyright and/or third party copyrights for each of such software modules. The product also uses software modules that we have developed and/or produced. And there exist our copyright and intellectual property for each of such software and related items including but not limited to the software related documents.

These rights above are protected by copyright law and other applicable laws. And the product uses software modules licensed as Freeware upon GNU GENERAL PUBLIC LICENSE Version 2 and GNU LESSER GENERAL PUBLIC LICENSE Version 2.1 established by Free Software Foundation, Inc. (U.S.) or license agreements for each software.

Check our website for license agreements for such software modules and other software. (📖 1)

Contact dealer in your region for inquiry regarding licensed software. Refer to License agreement of each software in Supplement (the end of this manual) and license agreements of each software on the web page for detail of the license conditions and so on. (The original in English is carried since the license agreement is established by third party other than us.)

Because the program (the software module) is licensed free of charge, the program is provided "as is" without warranty of any kind, either expressed or implied, to the extent permitted by applicable law. And we do not take any responsibility or compensate for loss of any kind (including but not limited to loss of data, loss of accuracy or loss of compatibility with interface between other programs) by the software concerned and/or use of the software concerned to the extent permitted by applicable law.

Troubleshooting - Warranty and after-service

If an abnormal operation (such as smoke, strange odor or excessive sound) should occur, stop using the projector immediately.

Otherwise if a problem occurs with the projector, first refer to “Troubleshooting” of the Operating Guide and Network Guide, and follow the suggested checks.

If this does not resolve the problem, consult your dealer or service company. They tell you what warranty condition is applied.

Check our website where you may find the latest information for this product. (📖 1)

NOTE • The information in this manual is subject to change without notice.

- The illustrations shown in this manual are example only. Your projector may differ from the illustrations.
- The manufacturer assumes no responsibility for any errors that may appear in this manual.
- The reproduction, transfer or copy of all or any part of this document is not permitted without express written consent.

Trademark acknowledgment

- HDMI™, HDMI High-Definition Multimedia Interface™ and HDMI™ logo are trademarks or registered trademarks of HDMI Licensing Administrator, Inc. in the United States and other countries.
 - Blu-ray Disc™ and Blu-ray™ are trademarks of Blu-ray Disc Association.
- All other trademarks are the properties of their respective owners.