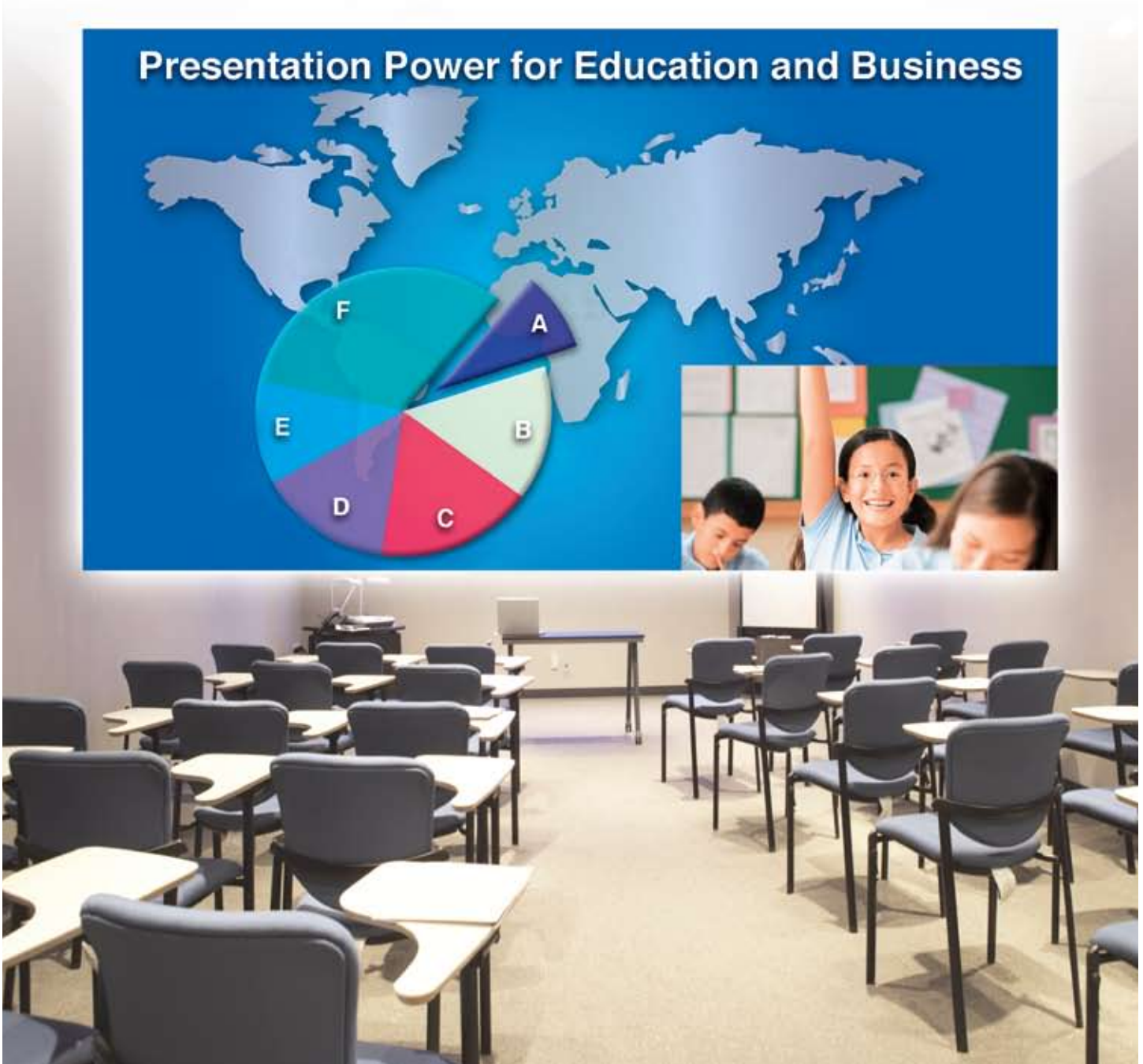


Ultra Portable Multimedia Projector

PLC-WXU700

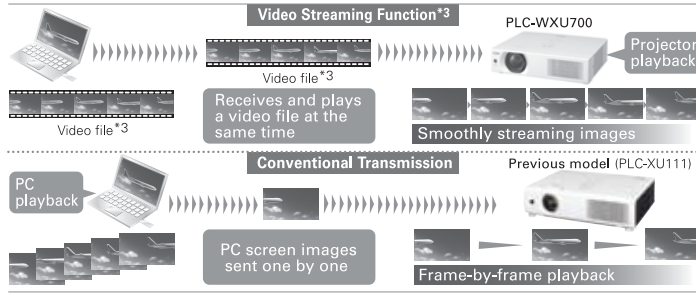


**IEEE 802.11n High-Speed
Wireless LAN and Video
Streaming Function**



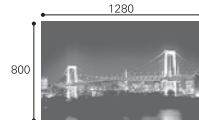
The Industry's First** Projector with IEEE 802.11n High-Speed Wireless LAN and Video Streaming Function

The industry's first projector with an IEEE 802.11n high-speed wireless LAN function offers faster wireless transmission than ever before. And the video streaming function allows it to play a video file as it is being received. These functions produce smoothly streaming motion images.



True WXGA Resolution (1280 x 800)

Compatible with wide screen laptops for a true wide screen WXGA (16:10) presentation.



Compact, Bright Ultra Portable Projector

With its high-intensity UHP lamp, it can show images with 3,800 lumens, the highest level of brightness offered by any wide-screen ultra portable projector. This makes it ideal for use in bright locations.

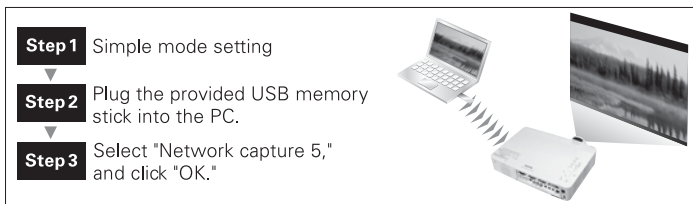


Windows Vista® Network Projector Function Supported

Windows® Embedded CE 6.0 is preinstalled in the projector to support the Network Projector function standard feature of Windows Vista®. This eliminates the need to install a special program or driver, and projects images from a Windows Vista® PC over a network, without having to change any complex settings.

"Simple Wireless Setting"***2 Via USB memory

Just plug the provided USB memory stick into a PC and click to automatically set-up your wireless LAN. You can easily start projection without having to use a driver CD or make any complicated settings.



USB Memory Viewer

When a USB memory stick is inserted into the projector, the Memory Viewer function will project still or motion images stored in USB memory to enable video file playback without having to use a PC.

Easy Setup Function

PLC-WXU700 provides "Auto Setup Function" that corrects vertical shape distortion by searching for an input signal and detecting projector incline, reducing setup time.

Furthermore, the "Screen Guidance Function" allows projector set up according to the displayed guidance. This function provides an easy guide to projection.

Other Features

- HDMI (Ver.1.3b) terminal
- Power Off and Go
- Wide-Range 1.6x Zoom
- Picture in Picture* function & Picture by Picture* function
- USB Memory Viewer
- PJ Link compatibility
- 17-Language on-screen menu
- User logo (screen capture)
- No show
- Freeze
- Presentation timer

* Some video files cannot be played, depending on the combination of input signals.

PLC-WXU700



Specifications	
Model name	PLC-WXU700
Panel	0.74 inch TFT p-Si x 3 with Micro Lens
Resolution	1280 x 800
Lamp wattage	275 W
Brightness (typical)**1	3800 lm (Lamp mode "High")
Contrast *1	500:1 (Lamp mode "AUTO" & "Dynamic mode")
Uniformity *1	85% (corner to center)
Projection lens	F1.7 - 2.5 f= 0.8 - 1.2 inch
Screen Size	40" - 300"
Throw distance	tele 3.3 - 39.7 ft, 100" 8.2 - 13.2 ft
Zoom / Focus	1-1.6 Manual driven U:D = 49.1
SD/HDTV signals	480i, 480p, 575i, 575p, 720p, 1035i, 1080i, 1080p (HDMI)
Color systems	PAL / SECAM / NTSC / NTSC4.43 / PAL-M / N
Video Signal	S-Video, Composite, Dsub-15pin for Component
Terminals	RCA: Composite Video Mini-DIN 4-pin: S-Video HDMI for Digital signal, Dsub-15 for input/ component, Dsub-15 for Input/Monitor Out
Computer compatibility	WSXGA+ / WXGA+ / UXGA / WXGA / SXGA+ / SXGA / XGA / SVGA
Audio	RCA (L/R) for Video input, Mini-Jack x 2 (Stereo) for Computer input, Mini-Jack (Stereo) for output (variable)
Communication Terminal	Dsub-9 for Control Port (RS-232C), USB type A, B, R/C Jack, RJ-45 for LAN
Presentation Tool	Freeze / Digital Zoom / No Show / Page Up-Down / etc
Other Features	Progressive, 3-2 & 2-2 pull down, LTI & CTI. *2 User Logo, Security: PIN code lock, Key lock
Scanning frequency	H sync 15 - 100 kHz, V sync 50 - 100 Hz Dot clock 140 MHz
Sound output	1.0 W Mono
Voltage	100 V-240 V AC (auto voltage)
Power consumption	100-120 W AC, 364 W (High) / 333 W (Normal) / 292 W (Eco) / 10.5 W (Standby Eco)
Dimensions (W x H x D)	13.2 x 3.1 x 10.1 inch
Weight	7.9 lbs
Included accessories	Quick reference guide, CD-ROM read me note, PIN code label, Computer cable (D-sub15-Dsub15), Easy wireless set up software (USB memory), Power cord (Detachable), Remote Control, User's manual (CD-ROM), Soft Carrying Bag, Lens cap, CD-ROM (Application software for network), AAA Battery x 2

Replacement Lamp Type No.: 610 333 9740

*1 Measurement, measuring conditions, and method of notation all comply with ISO 21118 international standards.
*2 Luminance Transient Improvement (LTI) and Color Transient Improvement (CTI) sharpen the detail.

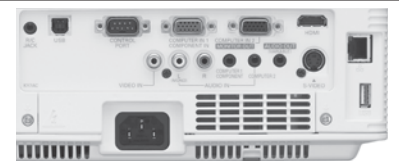
*All product names and company names are trademarks or registered trademarks of their respective companies.

Approximate throw distance/ picture size (unit: ft)

Screen Size 16 : 10 aspect ratio	WIDE	TELE
60"	4.9 ft	7.9 ft
70"	5.9 ft	9.2 ft
80"	6.6 ft	10.5 ft
100"	8.2 ft	13.1 ft
150"	12.5 ft	19.7 ft
200"	16.7 ft	26.6 ft
250"	21.0 ft	33.1 ft
300"	25.3 ft	39.7 ft

Approximate throw distances shown on left were calculated on lens design specifications. Please note that up to 5% deviation may result due to lens variation.

Terminals



SANYO

SANYO Presentation Technologies

Toll free: 888-337-1215 www.sanyoprojectors.com

© 2009 SANYO North America Corporation.