

XD480U / XD450U / XD400U

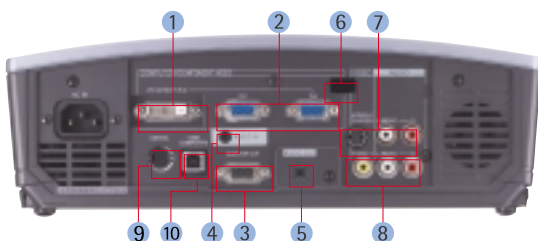


Specifications

Model	XD480U	XD450U	XD400U
Display technology	0.7"1-chip DMD chip, 12deg.DDR, DDP1000		
Resolution	1024 x 768 (total 786,432 pixels), 600 video lines		
Brightness	3000 lm	2600 lm	2100 lm
Contrast	2200 : 1		
Picture size	40" ~ 300" (100" = 3.8m)		
Source lamp	250W (Shut Off Time 2000Hrs) with Low Mode (200W: Shut Off Time 5000Hrs)		200W (Shut Off Time 5000Hrs)
Computer compatibility	VGA® ~ SXGA® (640 x 480 ~ 1280 x 1024), True: 1024 x 768, Sync on green available		
Video compatibility	NTSC / NTSC 4.43 / PAL (including PAL - M, N) / SECAM / PAL - 60 / DVD (Component) / HDTV (525p, 625p, 1080i (50 / 60Hz), 720P (50 / 60Hz)) / SCART (RGB + 1Vcomp)		
PC input terminals	DVI-D (with HDCP) x 1, RGB: mini D-sub 15 pin x 2 Audio: Stereo mini jack x 1 (ø 3.5 mm)		RGB: mini D-sub 15 pin x 2 Audio: Stereo mini jack x 1 (ø 3.5 mm)
Video input terminals	Video: RCA x 1 + S - video x 1, Audio: RCA (L,R) x 2		
Output terminals	RGB: mini D-sub 15 pin x 1, Audio: Stereo mini jack x 1 (ø 3.5 mm)		
Communication terminals	RS - 232C; 8pin x 1, Mouse ; USB x 1		
Audio speaker	2 W mono		
Fan noise	32dBA (Lamp low mode)	30dBA (Lamp low mode)	30dBA
Dimensions (W x H x D)	310 x 100 x 245 mm (excluding height adjustment)		
Weight	2.9kg / 6.5lbs		
Power supply	AC100 ~ 120V / 220 - 240V / ±10%, 50 / 60Hz		

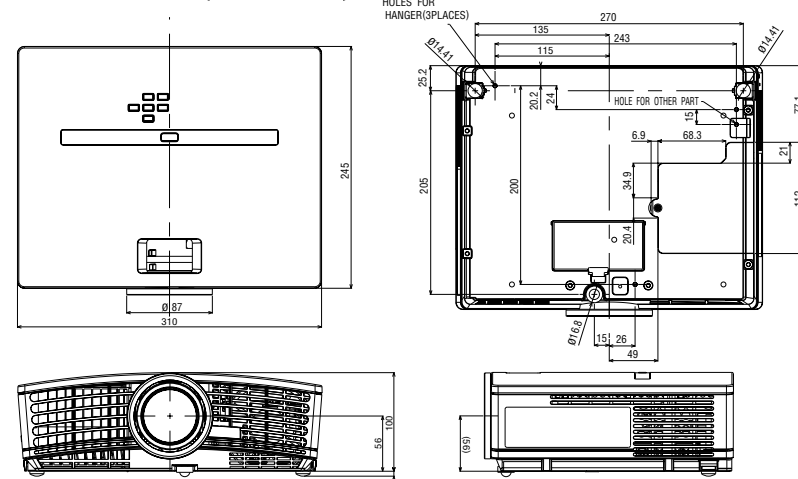
*Windows is a registered trademark of Microsoft Corporation. *Macintosh is a registered trademark of Apple Computer Inc. *SXGA, XGA and SVGA are registered trademarks of IBM Corporation. *All brand names and product names are trademarks, registered trademarks or trade names of their respective holders. *DLP (Digital Light Processing) is a trademark of Texas Instruments.

Input and Output Terminals

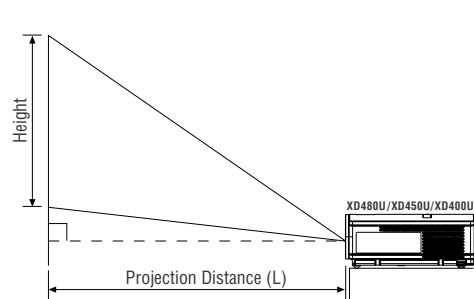


- 1 DVI-D input (XD480U/XD450U)
- 2 RGB In x 2
- 3 RGB Out x 1
- 4 Audio In
- 5 Audio Out
- 6 Remote IR
- 7 S-Video
- 8 Composite Video
- 9 RS-232C
- 10 USB

Dimensions (unit: mm, inch)



Projection distance at each screen size



Diagonal Size	Screen						Distance from screen (L)/(approximate)				Height projected Image(H)	
	Width		Height		Max. Zoom		Min. Zoom		inch		m	
	inch	cm	inch	cm	inch	m	inch	m	inch	m	inch	m
40	102	32	81	24	61	51	1.3	62	1.6	-2.8	-7.2	
60	152	48	122	36	91	77	2.0	94	2.4	-4.3	-10.9	
80	203	64	163	48	122	103	2.6	125	3.2	-5.7	-14.5	
100	254	80	203	60	152	130	3.3	157	4.0	-7.1	-18.1	
150	381	120	305	90	229	196	5.0	237	6.0	-10.7	-27.1	
200	508	160	406	120	305	262	6.6	316	8.0	-14.2	-36.2	
250	635	200	508	150	381	327	8.3	-	-	-17.8	-45.2	
300	762	240	610	180	457	393	10.0	-	-	-21.4	-54.3	
100	254	80	203	60	152	130	3.297	157	3.993	-7.1	-18.1	

The above numbers are approximate, and may be slightly different from the actual measurements.
 Max.Zoom(Wide) : $y=(x-1.4596)/29.888$ x:Diagonal Size of Screen (inch)
 Min.Zoom(Tele) : $y=(x-1.2084)/24.744$ y:Throw Distance (m)



VLT-XD400LP Replacement Lamp



348 Victoria Road, Rydalmere NSW 2116 Phone: (02) 9684 7777 • Fax: (02) 9684 7208

To find out more about XD480U/XD450U/XD400U and our projectors, visit us at

www.MitsubishiElectric.com.au

A Wealth of Features and Functions for Persuasive Presentations

XD480U / XD450U / XD400U



The new XD480U, XD450U and XD400U Projectors, high end performance without compromise.



5000h
LongLifeLamp



Equipped with a 1-chip DMD and 5,000-hour long-life lamp, these models let you conduct presentations comfortably without worrying about the operating hours. They weigh only 2.9 kg for easy mobility, and the extensive terminals allow connection of various devices for diverse system configurations. The XD480U and XD450U and XD400U ensure optimum presentations under any situations.

Centre Lens

Centre design for easy setup, operation button layout for easy use

The lens is positioned at the centre of the unit, so the projection angle can be easily aligned with the centre of the screen for easy setup. Furthermore, the frequently used Power button is located at the most accessible location on the control panel for smooth execution of presentations.

LONG LIFE 5000H

Extended operating time improves overall performance

The XD400U series¹ is equipped with a 1-chip DMD and a new long-life lamp (5000hour²) that operates much longer than conventional lamps. These features work together to not only greatly extend the projector's life cycle but also help to reduce maintenance requirements and provide more economical operation.



*1 XD480U and XD450U : with lamp low mode
*2 Approximate figure representing average operational life cycle.



XD480U / XD450U / XD400U

Versatile Input Terminals

Offering far more operating convenience for system installation, these multimedia data/video projectors are fully equipped with DVI-D (with HDCP) input terminals that allow for a variety of audio-visual and PC peripheral equipment to be connected easily. This kind of versatility is especially welcome when upgrading from a conventional CRT projector or creating a complete system for permanent installation.



2.9kg / 6.5lbs

Convenient input terminals increase versatility and operating ease

Weighing only 2.9kg (6.5 lbs.) the XD400U series is extremely portable but comes fully equipped with 2 RGB and 1 DVI-D inputs that provide high-quality images offering excellent gradation and high contrast. Additionally these input terminals enhance operating ease, making the XD400U series very mobile and conveniently suitable for installation anywhere.



Impressive Picture Quality

sRGB

Developed to ensure standard, uniform colour reproduction regardless of the type of display used, sRGB colour profile technology uses independent colour coordinates common to all display technologies. As a result, it helps to eliminate hue variations that occur between different display systems and more accurately matches the way colours look in real life.



To find out more details about sRGB, visit us at:
www.MitsubishiElectric.com.au

Natural Colour Matrix™



Equipped with Mitsubishi's "Natural Colour Matrix™", this projector model provides vivid and accurate colour reproduction that helps to add realism and appeal to any presentation. This innovative feature also allows precise adjustment of colour saturation and colour tones for exquisite image quality.



3D-Y/C

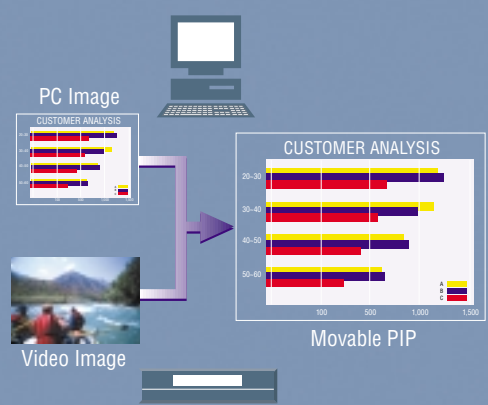
Digital signal processing achieves sharp and clear images by minimising cross-colour noise that causes rainbow-colour flickering of stripe patterns.



Technological Features

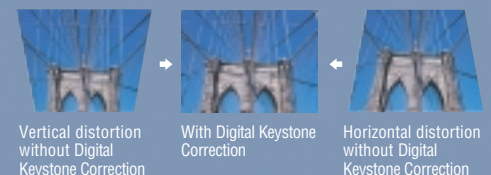
2 Live Picture-in-Picture (Real Motion)

This Mitsubishi Electric original technology allows you to show two images (two motion/live images) simultaneously on screen. For example, images from two different sources (PC and video) can be shown at the same time on the main screen and PIP to provide the audience with more visual information, doubling the impact of any presentation and making it ideal for video conferencing. Any increase in video processing to 60 frames/sec. provides smoother image transitions and it is also possible to zoom up on the picture.



Digital Keystone Correction

Absolutely essential for portable projectors, Digital Keystone Correction reduces line distortion by allowing for both vertical and horizontal correction to create a more natural-looking picture even when it is difficult to set up the unit perfectly perpendicular with the screen. This important feature allows you to project at an angle up to ±30° without worrying about trapezoid image distortion or zigzagging.



Digital-Expanded Zoom

Presentations become more professional and stimulating as Mitsubishi's Digital-Expanded Zoom makes it easy to explain and clearly see the details. Variable digital enlargement allows a section of an image to be magnified conveniently, making it ideal for use during lectures, meetings, etc.



User-Friendly Operation

Capturing Function

Users can customise the projector to their preference by inserting a corporate name, logo or an image of their choice — such as an original photo that can be edited as desired — on the Splash or Mute screen.



System Operation Remote

To further improve operating ease, the System Operation Remote can be programmed to control DVD players and video recorders connected to the projector.



10 languages OSD

The multi-language OSD makes these projectors ideal for international use, as it is capable of displaying 10 different languages including English, French, German, Spanish, Italian, Portuguese, Korean, Russian, Japanese, and Chinese. With this convenient feature, these multimedia data/video projectors are the worldwide choice for any business presentation.

